



Websters
estate agents
020 8892 3343
mywebsters.co.uk
For Sale

Websters
estate agents

Staines Road, Twickenham, TW2 5AY

Semi Detached 4 bedroom family home with driveway parking, a double length garage, a fully equipped residential annexe and a 110ft+ southerly aspect garden backing onto school fields. Situated just 0.1 mile from Waldegrave Girls School/Co-ed Sixth Form, 0.3 miles from Trafalgar Primary and less than 0.6 miles from St James, Stanley and Archdeacon Primary Schools.

Extended and loft converted to offer 1948 sq ft of well proportioned living space over 3 floors (including the annexe). Immaculately presented with high specification fixtures, fittings and floorings, double glazed windows and doors, solar panels providing power to the house and the national grid, neutral decor throughout and potential to reconfigure the layout and improve/expand the loft conversion (subject to Planning Permission and Building Regulations).

Porch opens into the entrance hallway with access to the bay fronted living room, the w.c, the family room and the kitchen/dining room. This light filled room has stylish fitted units, velux roof windows and space for seating and dining. Folding doors open onto the raised terrace with steps down to the garden with a patio, large lawn, mature planting, the garage, the annexe and secure gated side access.

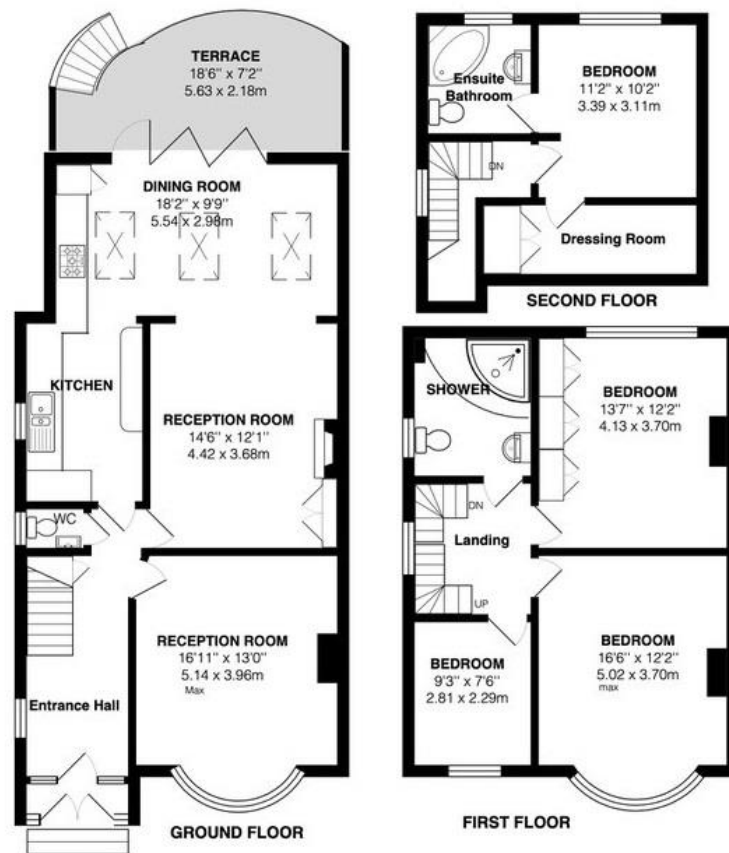
On the first floor are 3 bedrooms, the family bathroom and stairs up to the 4th bedroom with an en-suite bathroom, dressing room/storage and stunning garden views.

Located 0.4 miles from Twickenham Green, local shops bars and restaurants and only 0.6 miles from Fulwell and Strawberry Hill train stations.

EPC Rating D

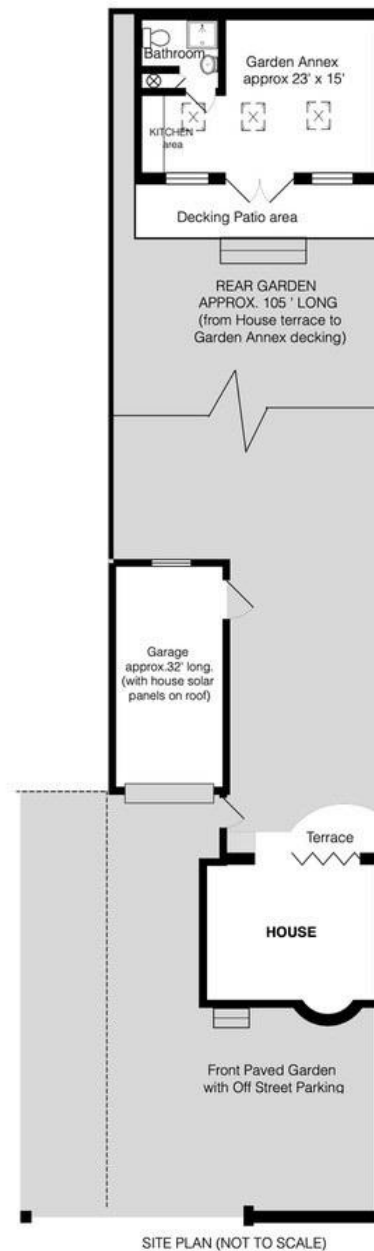
- Semi Detached 4 Bedroom Home
- 110 Ft South Facing Garden
- Seperate Residential Annexe
- Driveway Parking and Double Length Garage
- No Onward Chain
- 1948 Sq Ft of Living Space over 3 Floors
- 0.4 Miles from Twickenham Green
- 0.1 Mile from Waldegrave Girls School





TOTAL FLOOR AREA approx. = 1,948 Sq Ft/180.9 Sq M (including annex)

TOTAL FLOOR AREA approx. = 1,603 Sq Ft/148.9 Sq M (excluding annex)



a Websters Estate Agents 36 Broad Street, Teddington, Middlesex TW11 8QY

t 020 8614 6000

e sales@mywebsters.co.uk **w** mywebsters.co.uk

Disclaimer

These particulars, whilst believed to be accurate are set out as a general outline only for guidance and do not constitute any part of an offer or contract. Intending purchasers should not rely on them as statements of representation of fact, but must satisfy themselves by inspection or otherwise as to their accuracy. We have not carried out a detailed survey nor tested the services, appliances and specific fittings. Room sizes should not be relied upon for carpets and furnishings. The measurements given are approximate. No person in this firm's employment has the authority to make or give any representation or warranty in respect of the property.

