



TEMPLEWOOD
W13

£775,000

Pitshanger



TEMPLEWOOD , W13

£775,000



32ft Reception Room



Kitchen



Four Bedrooms



Two Bathrooms



Off street parking

A spacious 1519 sq.ft four bedroom end of terrace town house with off street parking and a larger than average garden. The property offers a good sense of space and flexible living accommodation over three floors. As the vendors sole agent we advise an early inspection to avoid disappointment.

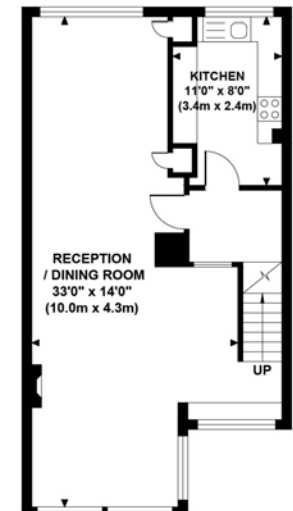
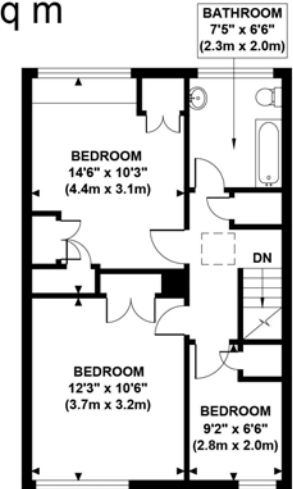
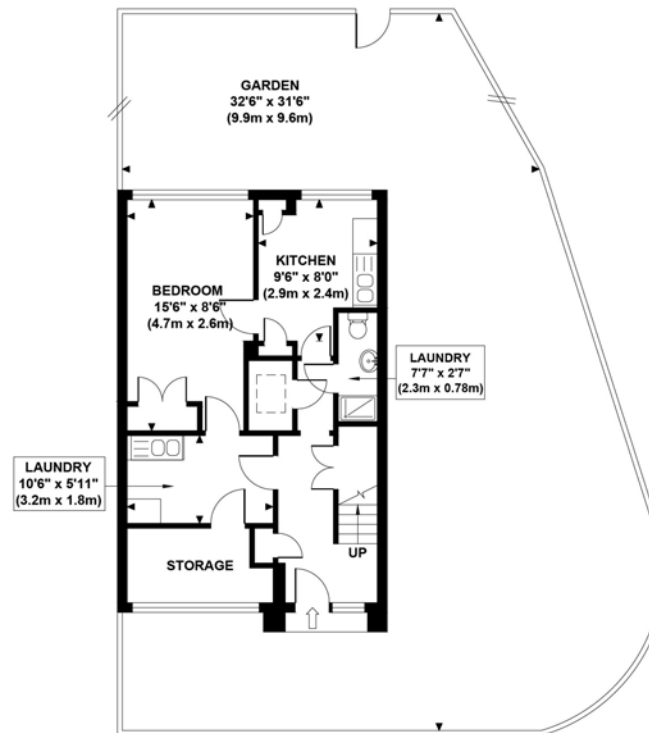
Located on the corner of Kent Gardens and Templewood in the sought-after Cleveland Estate, moments from the lovely open spaces of both Cleveland and Pitshanger Parks. A short walk from Pitshanger Lane's Award Winning High Street, with its excellent local amenities including a variety of local shops, restaurants, good primary schools, and local bus services to Ealing Broadway.

EPC RATING: E
LOCAL AUTHORITY: Ealing
COUNCIL TAX BAND: F

You may wish to instruct us about a related service, including: the sale and letting of residential and commercial property, the provision of mortgage and financial services, conveyancing and property management. Where you choose to use other services, Northfields or its employees may receive a fee or commission which will be disclosed to you.

TEMPLEWOOD

Approximate Gross Internal Area
1519 sq ft / 141.09 sq m



Although every attempt has been made to ensure accuracy, all measurements are approximate and no responsibility is taken for any error, omission, or mid-statement. This floor plan is for illustrative purposes only and not to scale. Measured in accordance to RICS standards.
GB PRO PHOTOS

Your local independent
award winning estate agents



Pitshanger

1 Albert Terrace
Ealing
London W5 1RL
Sales: 020 8998 3111
E: pitssales@northfields.co.uk

020 8998 3111

www.northfields.co.uk

CONTACT

Us today

TO FIND OUT

MORE