



Northfields

DARWIN ROAD
W5

£589,950

Northfields



DARWIN ROAD, W5

£589,950



Reception Room



Kitchen Diner



Three Bedrooms



Two Bathrooms



Residents Permit

This three bedroom split level flat blends the best of a crisp, modern look within a period setting. Tucked into the residential streets of the area known as Little Ealing, this conversion flat is as charming as the surrounding area. From the moment you step inside the entrance to the first floor landing, you'll start to get an idea of how inviting this home really is. It is the reception room that we think will first impress you with its fresh and up-to-date style. The feature fireplace gives this room charm that sits beautifully alongside the fresh and bright décor. One of the three double bedrooms has a crisp look with carpeted floors and each of the bedrooms invites a lot of lighting. The eat-in, fitted kitchen is separate and has wood effect cabinets, dramatically dark worktops and a large window to fill the space with light. The main bathroom has a full suite with a shower above. Stairs lead up to the primary bedroom on the second floor where skylights make the space bright, allowing light to spill over floors. The en-suite shower room makes this main bedroom feel like that much more of a retreat.

This home is a short walk to Northfields & South Ealing tube and Brentford rail station. Parents will be thrilled to know that this home falls in the Little Ealing School catchment area as well as the new Ealing Fields School. The mix of independent and well-known shops along Northfield Avenue act as the hub for this community oriented neighbourhood while the myriad shopping and dining options of Ealing Broadway are not far away.

EPC RATING: C

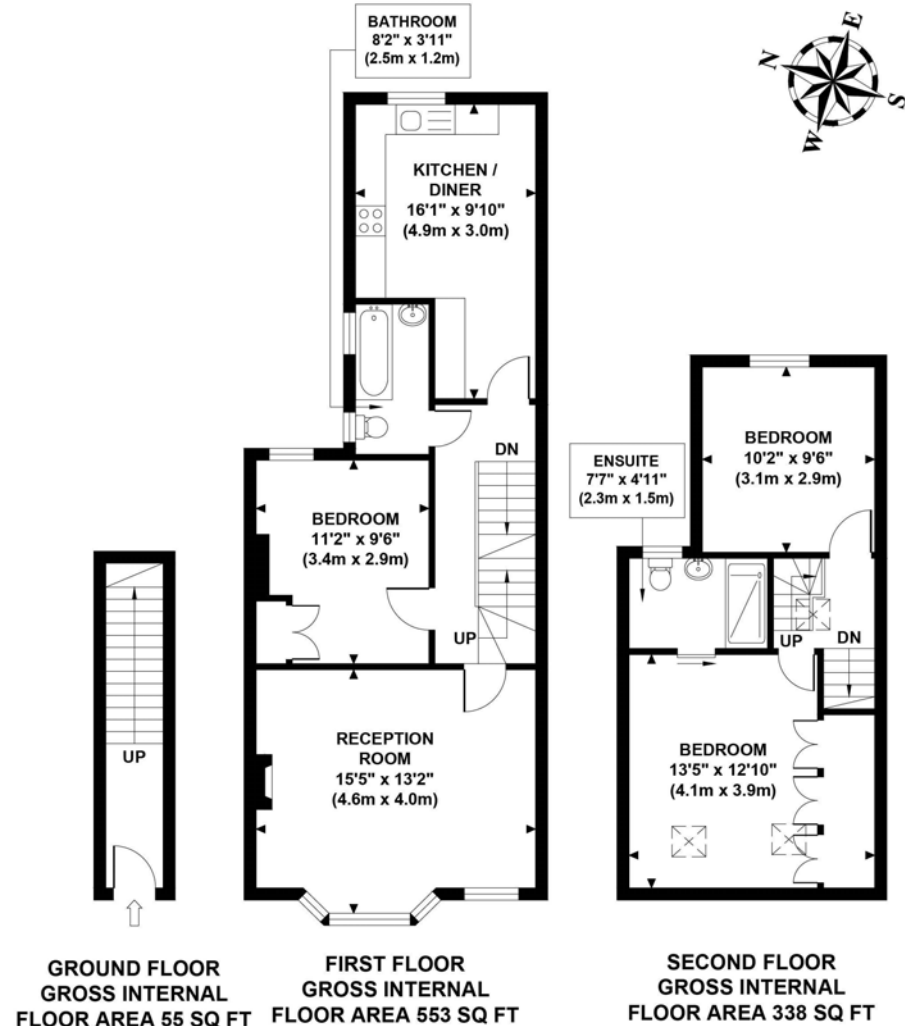
LOCAL AUTHORITY: Ealing

COUNCIL TAX BAND: C

LENGTH OF LEASE: 999 years from 20 February 2017 - Share of freehold

You may wish to instruct us about a related service, including: the sale and letting of residential and commercial property, the provision of mortgage and financial services, conveyancing and property management. Where you choose to use other services, Northfields or its employees may receive a fee or commission which will be disclosed to you.

DARWIN ROAD
Approximate Gross Internal Area
946 sq ft / 87.90 sq m



Although every attempt has been made to ensure accuracy, all measurements are approximate and no responsibility is taken for any error, omission, or mid-statement. This floor plan is for illustrative purposes only and not to scale. Measured in accordance to RICS standards.
GB PRO PHOTOS

Your local independent
award winning estate agents



Northfields

130-132 Northfield Avenue,
Ealing W13 9RT
Sales: 020 8840 6666
E: nasales@northfields.co.uk

020 8840 6666

www.northfields.co.uk

CONTACT

Us today

TO FIND OUT

MORE