



Northfields

SANDALL CLOSE
W5

£485,000

Ealing



SANDALL CLOSE, W5

£485,000



Reception Room



Kitchen



Two Bedrooms



Bathroom



On Street

A lovely 1930's two double bedroom ground floor maisonette, with a secluded 50 ft. private rear garden. In recent years the property has benefited from new pvc double glazed windows, new gas central heating boiler and an extended lease, which is now 120 years unexpired.

Sandall Close is a quiet cul-de-sac, adjoining parkland and a short walk from both Hanger Lane (Central Line) & Park Royal (Piccadilly Line) underground stations. Regular buses offer easy access to Ealing Broadway station (forthcoming Crossrail link) The property also falls in the catchment area for the outstanding Montpelier primary school.

EPC RATING: D

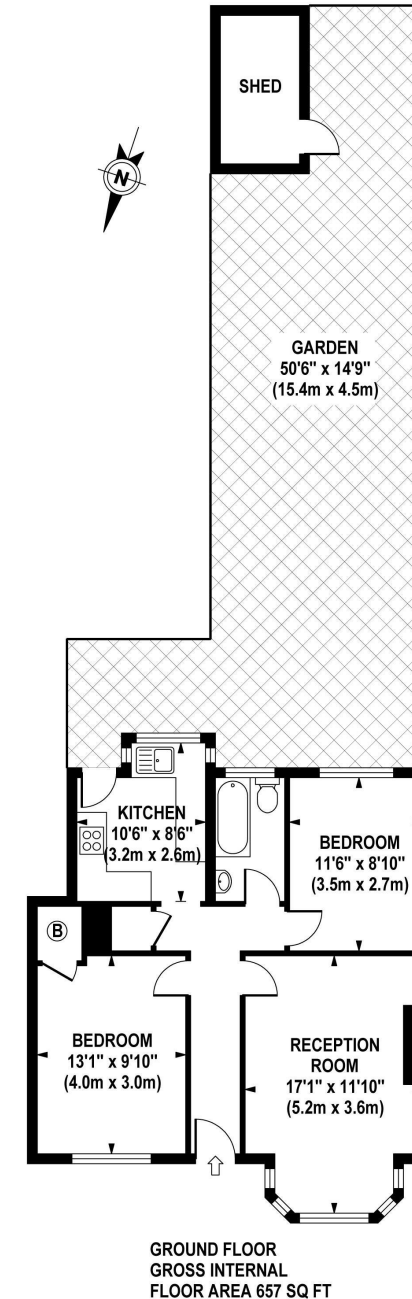
LOCAL AUTHORITY: London Borough of Ealing

COUNCIL TAX BAND: D

LEASE: 17 December 1980 to December 2138

SANDALL CLOSE

Approximate Gross Internal Area 657 sq ft / 61.0 sq m
(Excluding Shed)



Although every attempt has been made to ensure accuracy, all measurements are approximate. The floor plan's for illustrative purposes only and not to scale. Measured in accordance to RICS standards.

DE-PHOTOGRAPHY.NET

Your local independent award winning estate agents



Pitshanger

1 Albert Terrace
Ealing
London W5 1RL
Sales: 020 8998 3111
E: pitssales@northfields.co.uk

020 8998 3111

www.northfields.co.uk

CONTACT

Us today

TO FIND OUT

MORE