



Websters  
estate agents



# Lion Road, Twickenham, TW1 4JF

A charming 2 double bedroom Victorian mid terrace cottage, in a hugely popular location, only 300 yards from Twickenham Green.

This stylish and deceptively spacious house, has a separate living room at the front. The dining room at the rear opens onto a lovely modern, well fitted kitchen which is situated in an extension with roof lights and doors opening out onto the delightful west facing patio garden.

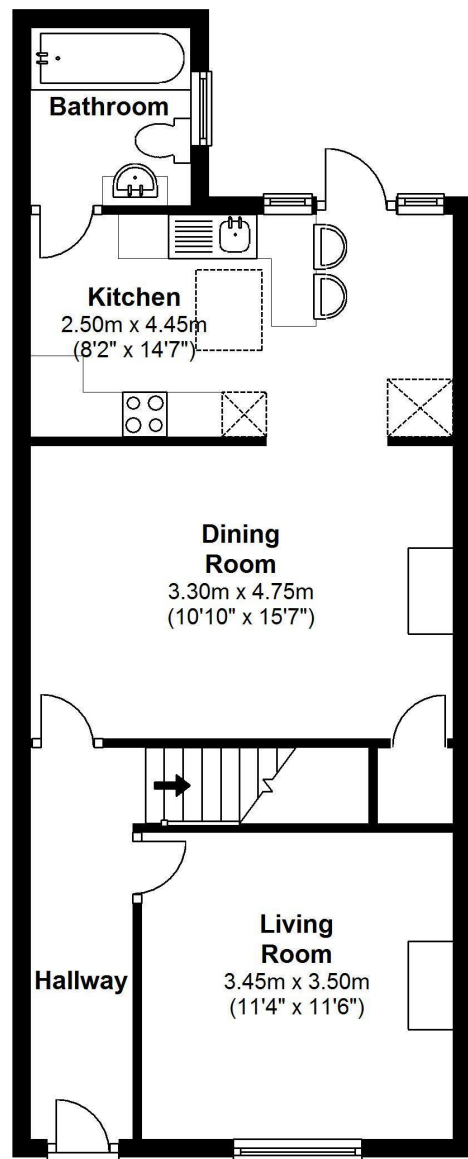
A fully fitted luxury bathroom is located to the rear of the kitchen.

Upstairs are 2 very well sized double bedrooms, which with the possibility to extend upstairs, may offer the potential to create a 3rd bedroom and/or relocate the bathroom - subject to planning permission.

Lion Road is situated off Heath Road and is close to excellent schools, superb shops and only 0.6 miles from Twickenham mainline railway station.

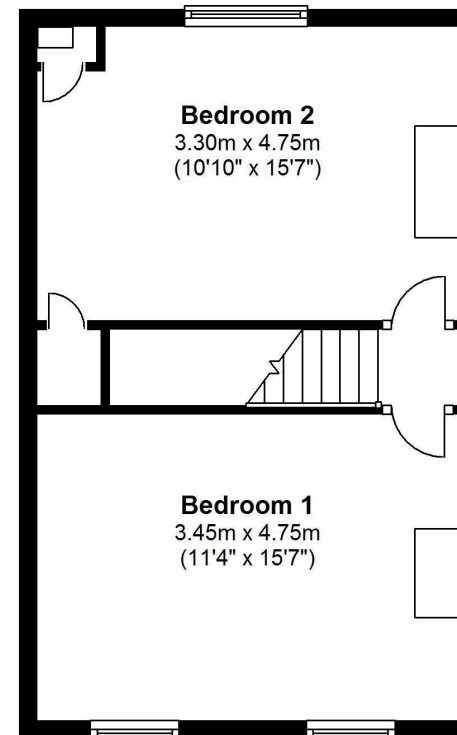
- Victorian Mid Terrace House
- Separate Living Room
- 2 Large Double Bedrooms
- Large Dining Room
- Modern Well Planned Kitchen
- West Facing Garden
- Potential to Extend/ Remodel Upstairs
- Twickenham Mainline Station 0.6 Miles





### Ground Floor

*Approx.area 557 Sq.Feet ( 51.78 sq.metres)*



### First Floor

*Approx.area 399 Sq.Feet (37.05 sq.metres)*

*Total Floor area approx.956 Sq.Feet (88.83sq.metres)*

**a** Websters Estate Agents 36 Broad Street, Teddington, Middlesex TW11 8QY

**t** 020 8614 6000

**e** sales@mywebsters.co.uk **w** mywebsters.co.uk

#### Disclaimer

These particulars, whilst believed to be accurate are set out as a general outline only for guidance and do not constitute any part of an offer or contract. Intending purchasers should not rely on them as statements of representation of fact, but must satisfy themselves by inspection or otherwise as to their accuracy. We have not carried out a detailed survey nor tested the services, appliances and specific fittings. Room sizes should not be relied upon for carpets and furnishings. The measurements given are approximate. No person in this firm's employment has the authority to make or give any representation or warranty in respect of the property.



