



Websters  
estate agents



# Valley Mews, Twickenham, TW1 4QT

Ground Floor 1 double bedroom apartment in a popular development with residents parking, a garage, external storage cupboard and use of communal gardens. Situated just 0.2 miles from Twickenham town centre shops, cafes and restaurants and 0.5 miles from Twickenham mainline station.

With no onward chain, Lease with 960 years remaining and tastefully presented 543 sq ft of well balanced living space with modern fixtures, fittings and floorings, large double glazed windows and doors and neutral decor throughout.

Hallway leads to built in storage, the double bedroom with built in wardrobes, the bathroom, the spacious fitted kitchen and the dual aspect living room with space for seating and dining and a door onto the communal gardens.

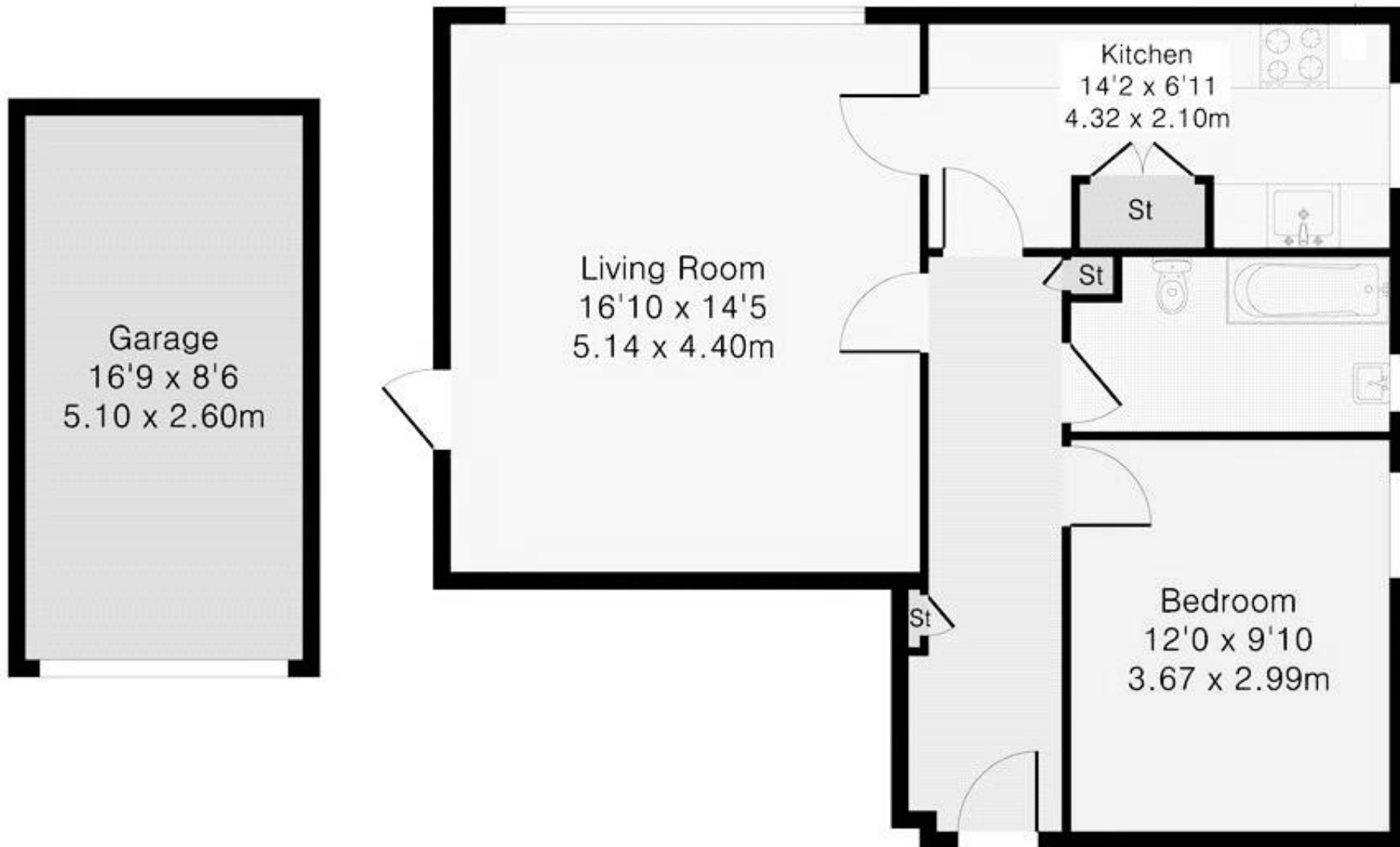
Located 0.4 miles from Church Street and Twickenham Riverside with a walking/cycle track along the Thames past Marble Hill Park to Richmond and 0.9 miles from the A316 with direct access to the M3/M25 and central London

EPC Rating D

- Ground Floor 1 Bedroom Apartment
- No Onward Chain
- Garage and External Storage Cupboard
- Use of Communal Gardens
- Dual Aspect Living Room and Separate Kitchen
- 543 Sq Ft of Light and Airy Living Space
- 0.5 Miles from Twickenham Mainline Station



Approximate Gross Internal Area 748 sq ft – 69 sq m  
(including garage)



**a** Websters Estate Agents 36 Broad Street, Teddington, Middlesex TW11 8QY

**t** 020 8614 6000

**e** [sales@mywebsters.co.uk](mailto:sales@mywebsters.co.uk) **w** [mywebsters.co.uk](http://mywebsters.co.uk)

**Disclaimer**

These particulars, whilst believed to be accurate are set out as a general outline only for guidance and do not constitute any part of an offer or contract. Intending purchasers should not rely on them as statements of representation of fact, but must satisfy themselves by inspection or otherwise as to their accuracy. We have not carried out a detailed survey nor tested the services, appliances and specific fittings. Room sizes should not be relied upon for carpets and furnishings. The measurements given are approximate. No person in this firm's employment has the authority to make or give any representation or warranty in respect of the property.



