



# PLOTS 27 & 28 - THE KILNSEY

## THREE BEDROOM SEMI-DETACHED HOME

This modern new-build home comprises three bedrooms to the first floor, with an ensuite to the master bedroom. The ground floor features an open-plan kitchen-diner with integrated modern

appliances. There's also a large separate living room, perfect for relaxing with the family, along with a handy downstairs WC. Outside is a turfed private garden and parking for two cars.

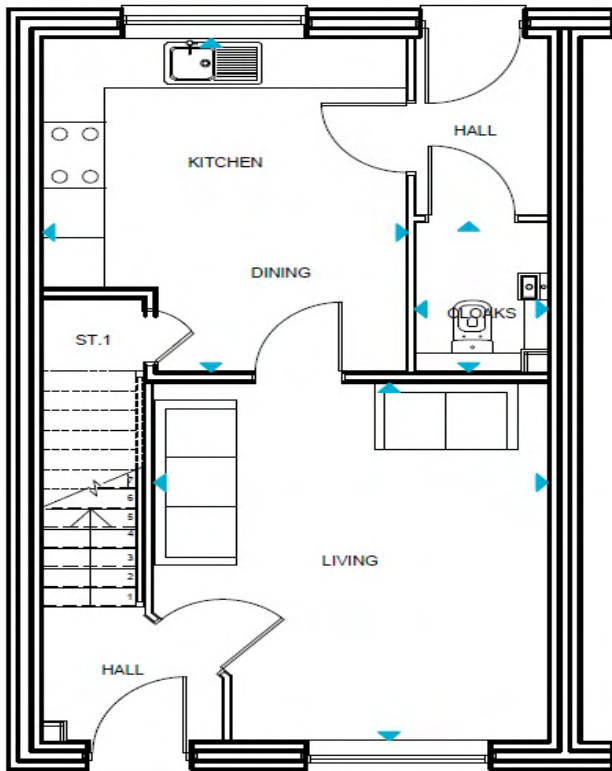
### KEY FEATURES

- Parking for two cars
- Designer kitchen
- Integrated appliances
- Open-plan dining room
- Spacious separate living room
- Ensuite to master bedroom
- Three bedrooms
- Handy downstairs WC
- Turfed garden



**WHARFEDALE**  
HOMES

07388 388147 or 01423 799690  
sales@wharfedalehomes.co.uk | www.wharfedalehomes.co.uk

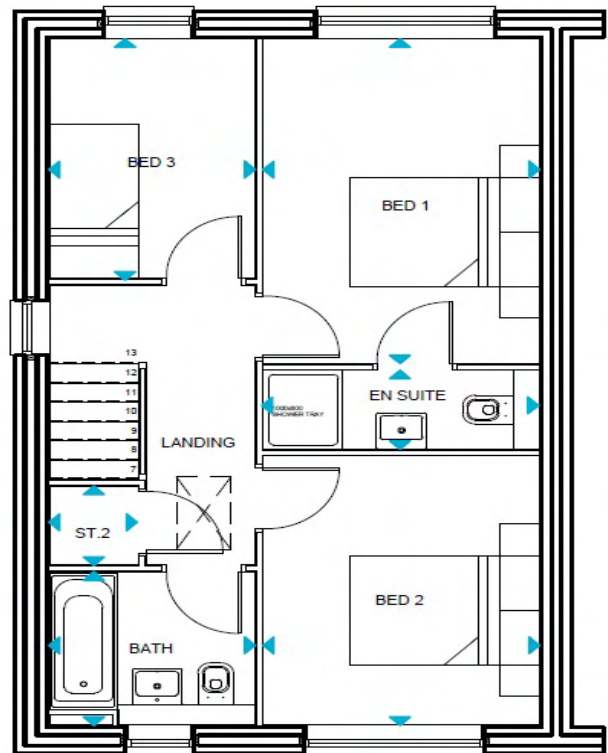


## GROUND FLOOR

Living	3860 X 4330 mm
Kitchen/Dining	3550 X 4030 mm
Cloaks	1280 X 1810 mm

## FIRST FLOOR

Bedroom 1	2770 X 4020 mm
Ensuite	2770 X 970 mm
Bedroom 2	2770 X 3340 mm
Bedroom 3	2060 X 2960 mm
Bathroom	1900 X 2060 mm



Information contained within this brochure is for guidance only. Wharfedale Homes Ltd operates a policy of continuous development and features may change. It should be noted that while artist's impressions, models and photography are as accurate as possible they are only representative. These particulars should not be relied upon as accurately describing any of the specific matters prescribed by any order made under consumer and business protection regulations. This information does not constitute a contract, part of a contract or a warranty. All measurements are scaled from plans and some may be varied during construction.



**WHARFEDALE**  
HOMES

07388 388147 or 01423 799690  
sales@wharfedalehomes.co.uk | www.wharfedalehomes.co.uk