



Northfields

ALBERT ROAD
W5

£835,000

Pitshanger



ALBERT ROAD

Approximate Gross Internal Area 1313 sq ft / 122.0 sq m

ALBERT ROAD, W5

£835,000



Reception Room



Kitchen



Three Bedrooms



Bathroom



Garage

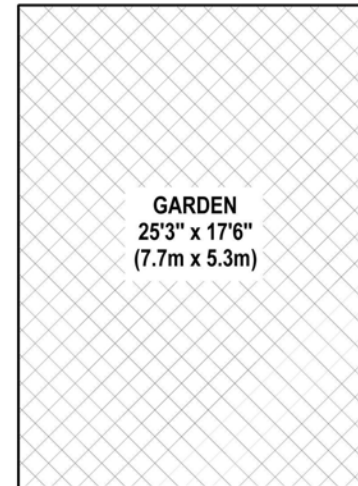
A modern three double bedroom detached town house located in the heart of Pitshanger Village. Set over three floors, the upper floors provide three double bedrooms, a family bathroom, living room and a cloakroom. The ground floor has a kitchen/diner and an integral garage, neighbouring houses have converted the garage into a lounge, transforming the property to a four double bedroom house. Outside there's a front drive and a sunny westerly aspect rear garden.

Located within the North Ealing Primary School catchment area and moments from Pitshanger Lane's Award Winning High Street. The open spaces of Pitshanger Park are nearby and this property further benefits from a variety of convenient public transport links.

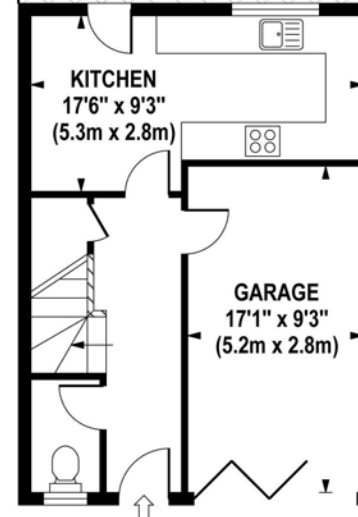
EPC RATING: D

LOCAL AUTHORITY: London Borough of Ealing

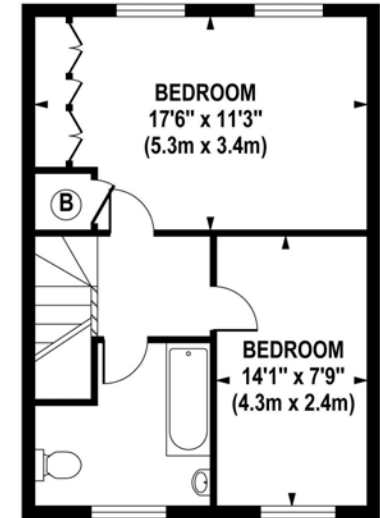
COUNCIL TAX BAND: G



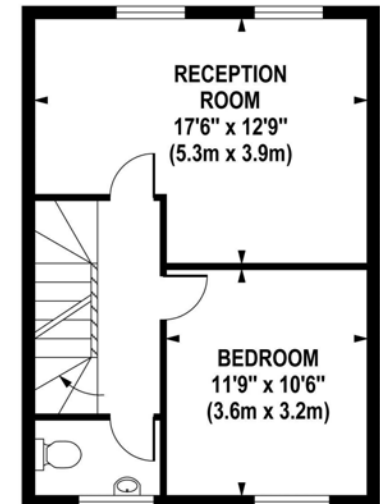
GARDEN
25'3" x 17'6"
(7.7m x 5.3m)



GROUND FLOOR
GROSS INTERNAL
FLOOR AREA 434 SQ FT



SECOND FLOOR
GROSS INTERNAL
FLOOR AREA 445 SQ FT



FIRST FLOOR
GROSS INTERNAL
FLOOR AREA 434 SQ FT

Although every attempt has been made to ensure accuracy, all measurements are approximate. The floor plan's for illustrative purposes only and not to scale. Measured in accordance to RICS standards.

DE-PHOTOGRAPHY.NET

Your local independent
award winning estate agents



Pitshanger

1 Albert Terrace
Ealing
London W5 1RL
Sales: 020 8998 3111
E: pitssales@northfields.co.uk

020 8998 3111

www.northfields.co.uk

