



Websters
estate agents

Kings Road, Teddington, TW11 0QE

Mid Terrace 4 double bedroom Victorian family home in the 'Royal Roads' area of Teddington just 0.4 miles from Bushy Park, 0.5 miles from Stanley and St Marys & St Peters and 0.7 miles from St James, The Mall and Waldegrave Girls/Co-ed Sixth Form.

Extended, loft converted and refurbished by the current owners to an impressive standard to offer 1527 sq ft of well proportioned living space over 3 floors with period features, high specification fixtures, fittings and floorings, double glazed windows and doors, energy efficient heating, lighting and appliances and tasteful neutral decor throughout.

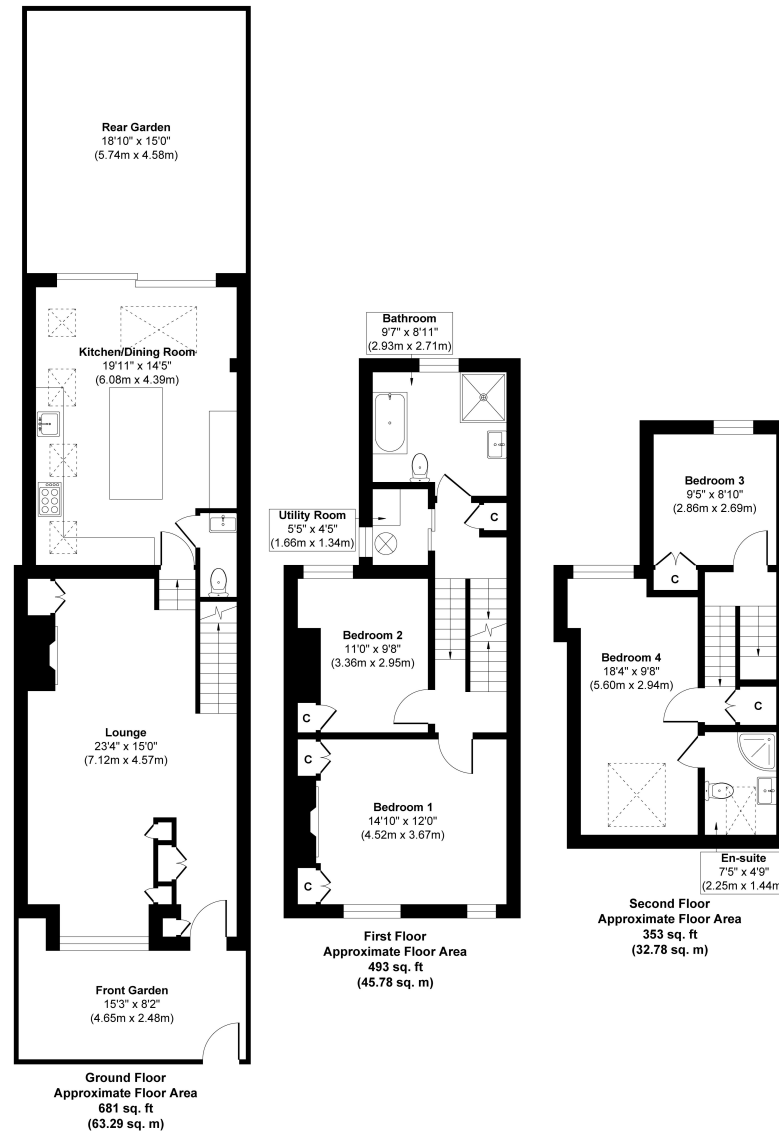
Entrance porch opens into the hall area with storage and access to the open plan family room with dark wood flooring, plantation style shutters, a feature fireplace and space for 2 living areas. Steps lead down to the spacious kitchen/dining room with stylish bespoke units, integrated appliances, a central island, stone tiled floor, roof lantern and velux windows, space for dining/seating and access to the w.c. Full width folding doors open onto the low maintenance garden with space for seating and storage and secure rear gated access. On the first floor are 2 bedrooms, the family bathroom, the laundry/utility room and stairs upto 2 further bedrooms, the front with an en-suite shower room and eaves storage.

Located within 0.4 miles of local shops and Fulwell Train Station, 0.7 miles from Teddington town centre shops, cafes and restaurants and 1 mile from Teddington train station.
EPC Rating C

- Mid Terrace 1527 Sq Ft Home
- 4 Bedrooms and 2 Bathrooms
- Extended, Loft Converted and Refurbished
- High Specification Throughout
- Stunning Bespoke Fitted Kitchen
- 0.7 Miles from Teddington Town Centre
- Within 0.7 Miles of Popular Schools



Kings Road, TW11



Approx. Gross Internal Floor Area 1527 sq. ft / 141.85 sq. m

a Websters Estate Agents 36 Broad Street, Teddington, Middlesex TW11 8QY

t 020 8614 6000

e sales@mywebsters.co.uk **w** mywebsters.co.uk

Disclaimer

These particulars, whilst believed to be accurate are set out as a general outline only for guidance and do not constitute any part of an offer or contract. Intending purchasers should not rely on them as statements of representation of fact, but must satisfy themselves by inspection or otherwise as to their accuracy. We have not carried out a detailed survey nor tested the services, appliances and specific fittings. Room sizes should not be relied upon for carpets and furnishings. The measurements given are approximate. No person in this firm's employment has the authority to make or give any representation or warranty in respect of the property.

