



Websters
estate agents

Lion Road, Twickenham, TW1 4JF

Attractive mid terrace 3 bedroom cottage in a popular location just 200 metres from Twickenham Green, local shops, bars and restaurants.

In immaculate condition, this lovely home offers 1091 sq ft of well planned living space over 3 floors with potential to extend at the rear on the ground floor (subject to planning permission and building regulations). No chain.

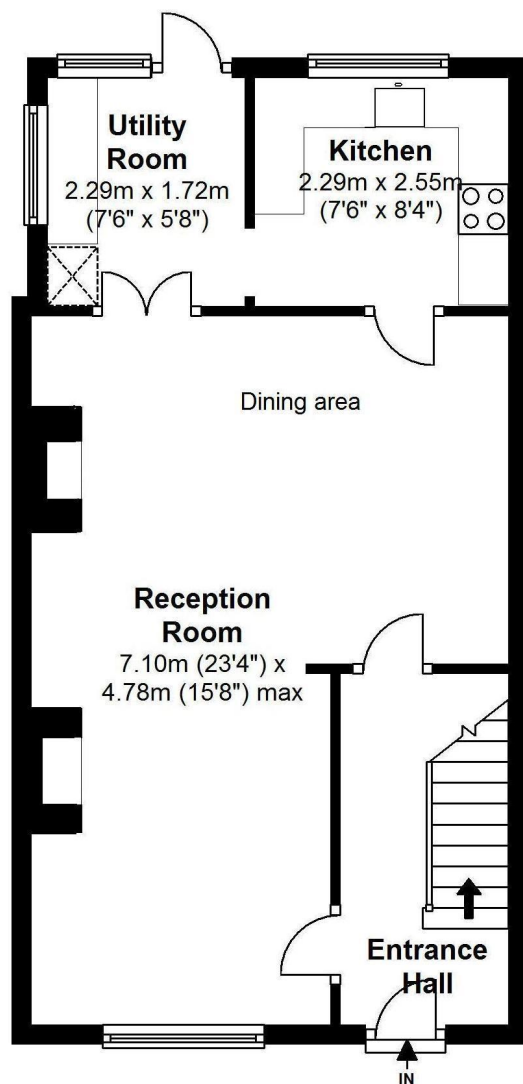
Entrance hallway leads to the open plan living/dining room with attractive wood flooring and exposed brickwork chimney breasts. Doors open into the fully fitted kitchen and the utility room at the rear with direct access onto the pretty 70 ft garden with patio, lawn and mature planting.

On the first floor are 2 double bedrooms and the luxury family bathroom with stairs leading to the master bedroom with en-suite shower facilities in the loft conversion.

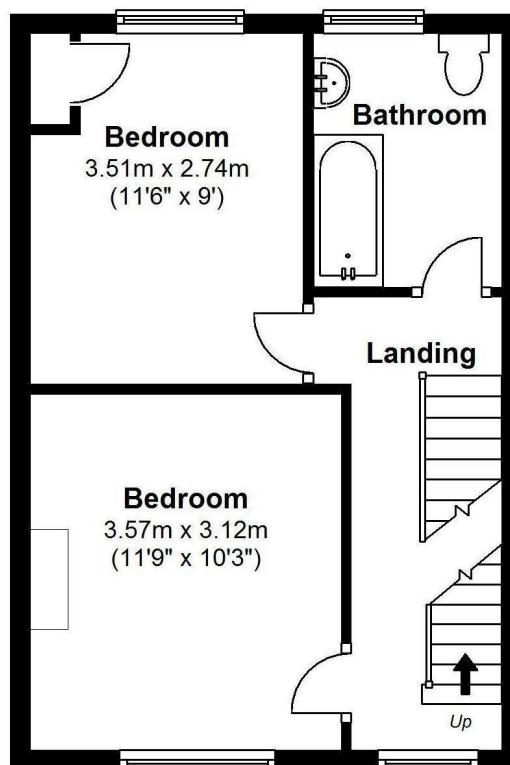
Vacant possession with no onward chain and located just 0.6 miles from Twickenham mainline train station and town centre. EPC Rating D

- Victorian Mid Terrace House
- Immaculately Presented Throughout
- Open Plan Living/Dining Room
- Fitted Kitchen and Utility Room
- 3 Double Bedrooms - No Forward Chain
- Luxury Bathroom and En Suite Shower Room
- Pretty 70ft+ Garden
- 0.6 Miles from Twickenham Mainline Station

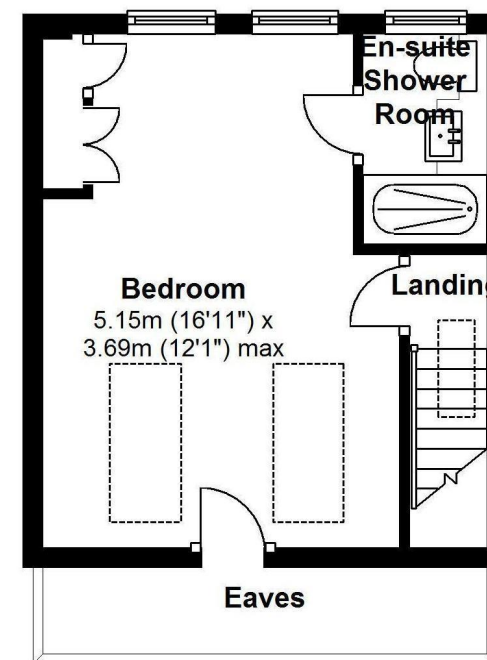




Ground Floor



First Floor



Second Floor

Gross Floor area approx. = 1,091 Sq.Feet (101.37 sq.metres)

Copyright epc@epcertificate.com

a Websters Estate Agents 36 Broad Street, Teddington, Middlesex TW11 8QY

t 020 8614 6000

e sales@mywebsters.co.uk **w** mywebsters.co.uk

Disclaimer

These particulars, whilst believed to be accurate are set out as a general outline only for guidance and do not constitute any part of an offer or contract. Intending purchasers should not rely on them as statements of representation of fact, but must satisfy themselves by inspection or otherwise as to their accuracy. We have not carried out a detailed survey nor tested the services, appliances and specific fittings. Room sizes should not be relied upon for carpets and furnishings. The measurements given are approximate. No person in this firm's employment has the authority to make or give any representation or warranty in respect of the property.

