



**BROMYARD AVENUE
W3**

£425,000 Offers In Excess Of

Acton



BROMYARD AVENUE, W3

£425,000 - OIEO



Reception Room
with Balcony



Fully fitted
Kitchen



Two Double
Bedrooms



Two Bathrooms



Underground Parking

Situated in this prestigious luxury building is a fantastic two double bedroom two bathroom apartment. Located on the third floor (with lift) this apartment offers fantastic views over the communal courtyard, a fully fitted modern kitchen, reception room and two double bedrooms.

The master en-suite bedroom is generously proportioned with built in wardrobes. The apartment benefits from a secure underground allocated parking space and private balcony. The property would make a great first time buy or an ideal investment purchase.

Bromyard House is an iconic and popular gated development, well maintained with 24hr concierge service. Situated on the desirable, tree-lined Bromyard Avenue and ideally located for a wealth of amenities on Uxbridge Road. There are excellent bus links available providing easy access to Westfields and Ealing Broadway. The W3 Club (previously known as Virgin Active Gym) is opposite Bromyard House and Tesco supermarket is within a short walking distance. Local tube links include East Acton, Acton Central (Overground), Shepherds Bush Market (Circle & Hammersmith) and Shepherds Bush (Central & Overground) stations.

EPC RATING: B

LOCAL AUTHORITY: London Borough of Ealing

COUNCIL TAX BAND: E

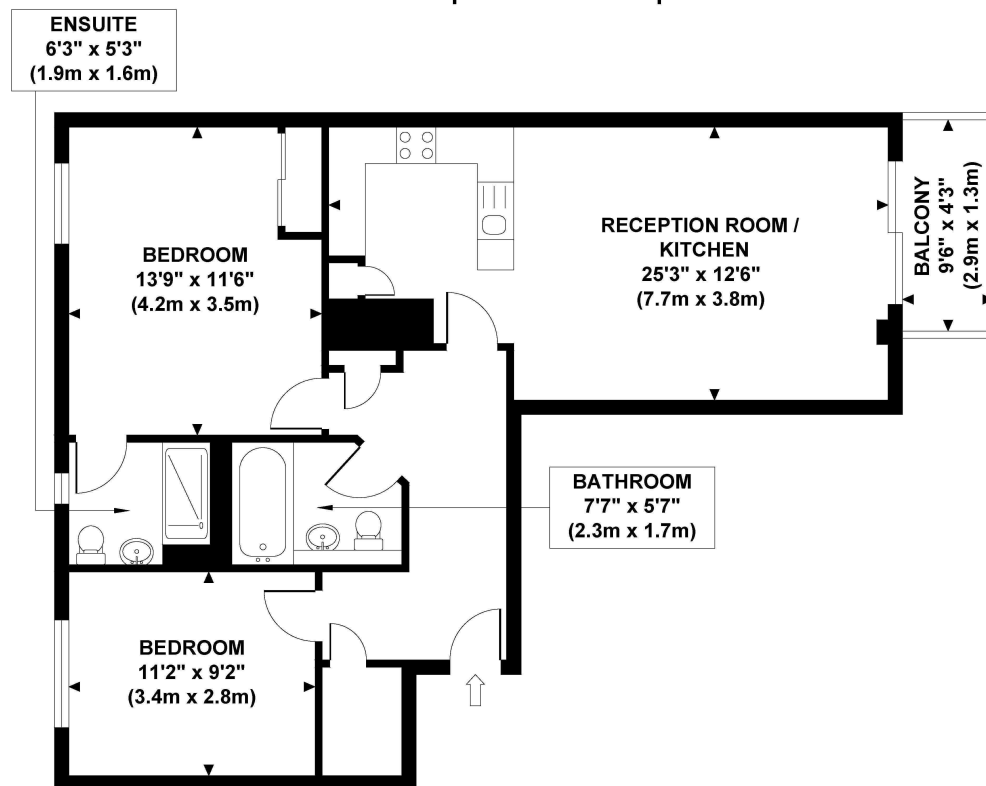
LEASEHOLD: 999 years from 1st January 2004

You may wish to instruct us about a related service, including: the sale and letting of residential and commercial property, the provision of mortgage and financial services, conveyancing and property management. Where you choose to use other services, Northfields or its employees may receive a fee or commission which will be disclosed to you.

BROMYARD HOUSE

Approximate Gross Internal Area

763 sq ft / 70.90 sq m



**THIRD FLOOR
GROSS INTERNAL
FLOOR AREA 763 SQ FT**



Although every attempt has been made to ensure accuracy, all measurements are approximate and no responsibility is taken for any error, omission, or mid-statement. This floor plan is for illustrative purposes only and not to scale. Measured in accordance to RICS standards.

GB PRO PHOTOS

Your local independent
award winning estate agents



Shepherds Bush

127 Askew Road,
Shepherds Bush W12 9AU
Sales: 020 8740 8833
E: sbsales@northfields.co.uk

020 8740 8833

www.northfields.co.uk

CONTACT

Us today

TO FIND OUT

MORE