



Websters
estate agents

Rivermeads Avenue, Twickenham, TW2 5JJ

Semi Detached 3 bedroom family home with a front garden and side access to the rear garden with a garage. Situated in a desirable Twickenham residential location just 0.6 miles from Heathfield Primary and 0.8 miles from Turing House and Waldegrave Girls School/Co-ed Sixth Form.

Tastefully presented to offer 1034 sq ft of living space over 2 floors with some double glazed windows and doors, neutral decor throughout and potential to extend, reconfigure the layout and loft convert (subject to Planning Permission and Building Regulations)

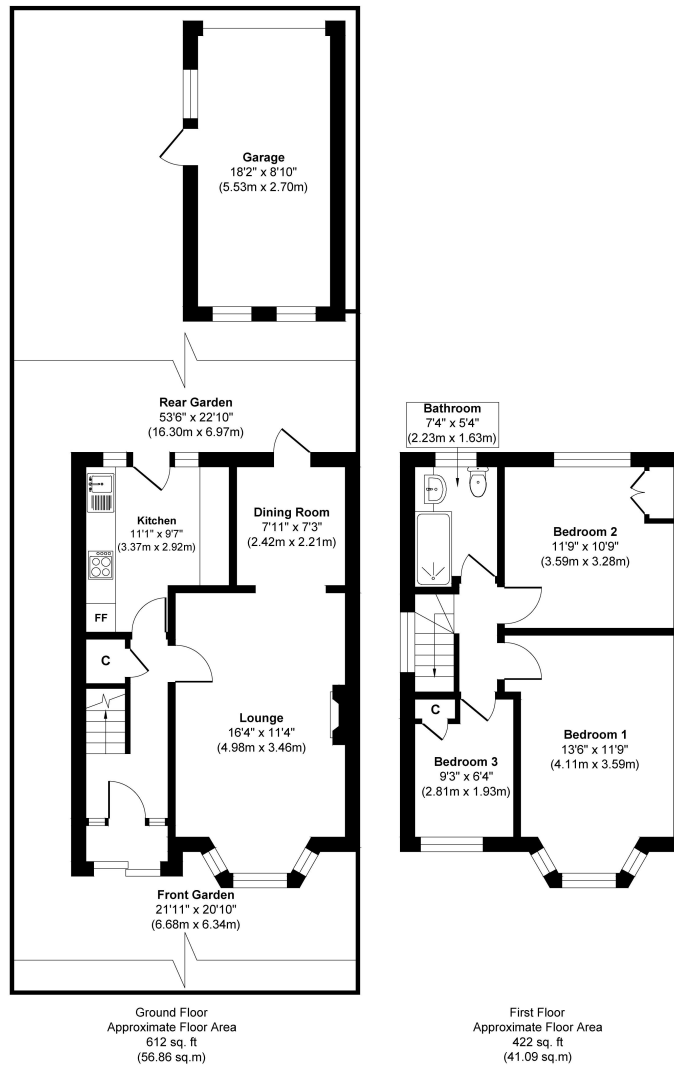
Entrance porch leads to the hallway with doors to the open plan, dual aspect living/dining room and the separate fitted kitchen. A door in each room opens onto the garden with a patio, lawn, gated side access and the garage with direct access from Court Close. On the first floor are 3 bedrooms, the family bathroom and hatch access to loft storage.

Located within 0.2 miles of Crane Park with a walking/cycle track along the river to central Twickenham, 0.3 miles from the A316 with direct access to the M3/M25 and into central London and 0.9 miles from Whitton and Fulwell train stations.
EPC Rating D

- Semi Detached 3 Bedroom Home
- Potential to Extend and Loft Convert (stpp)
- Currently 1034 Sq Ft of Living Space over 2 Floors
- Popular Residential Location
- Garage Accessed from Rear
- 0.2 Miles from Crane Park
- Within 0.8 Miles of Popular Schools



34 Rivermeads Avenue, TW2



Approx. Gross Internal Floor Area 1034 sq. ft / 97.95 sq. m

a Websters Estate Agents 36 Broad Street, Teddington, Middlesex TW11 8QY

t 020 8614 6000

e sales@mywebsters.co.uk **w** mywebsters.co.uk

Disclaimer

These particulars, whilst believed to be accurate are set out as a general outline only for guidance and do not constitute any part of an offer or contract. Intending purchasers should not rely on them as statements of representation of fact, but must satisfy themselves by inspection or otherwise as to their accuracy. We have not carried out a detailed survey nor tested the services, appliances and specific fittings. Room sizes should not be relied upon for carpets and furnishings. The measurements given are approximate. No person in this firm's employment has the authority to make or give any representation or warranty in respect of the property.

