



Websters
estate agents

Field Lane, Teddington, TW11 9BA

Second Floor 1 bedroom apartment in a popular over 60's Independent Living/Retirement development. Situated in central Teddington with direct access to shops, bars, restaurants, bus stops towards Kingston, Richmond and Heathrow and just 0.3 miles from Teddington train station.

With a 70% share of ownership, vacant possession, no monthly rental and in need of some updating. Tastefully presented to offer 592 sq ft of living space with with entry phone access, lifts to all floors, communal gardens, some residents parking, a full time on-site manager, private west facing balcony, residents laundry room and use of the family guest suite.

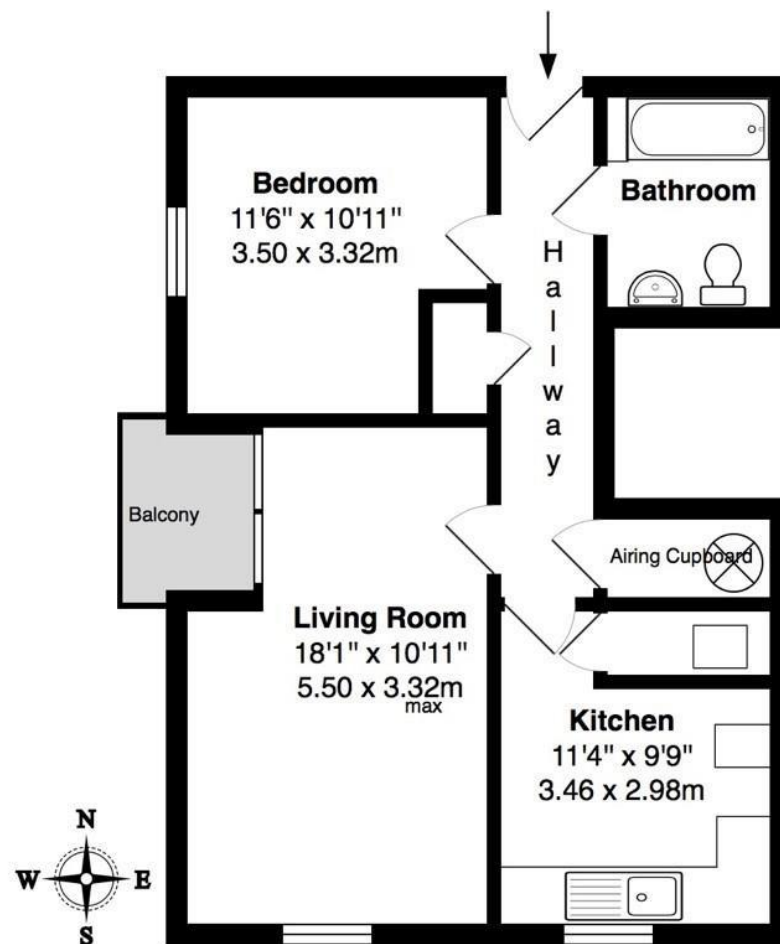
Entrance hallway leads to the bathroom, built in storage, the double bedroom, the living/dining room with doors onto the balcony and the separate fitted kitchen.

Located less than 0.5 miles from Bushy Park and Teddington footbridge leading across the Thames to Teddington Lock, Ham Lands and towpath walks towards Richmond and Hampton Court Palace.

EPC Rating C

- Second Floor 1 Bedroom Apartment
- Over 60's Independent Living Development
- Full Time On Site Manager
- Secure Entry and Lifts to All Floors
- Central Teddington Location
- Vacant Possession
- 0.3 Miles from Teddington Station





TOTAL FLOOR AREA approx. = 592 Sq.Feet Sq.Feet (55 sq.metres)
(inclds Balcony)

Disclaimer

These particulars, whilst believed to be accurate are set out as a general outline only for guidance and do not constitute any part of an offer or contract. Intending purchasers should not rely on them as statements of representation of fact, but must satisfy themselves by inspection or otherwise as to their accuracy. We have not carried out a detailed survey nor tested the services, appliances and specific fittings. Room sizes should not be relied upon for carpets and furnishings. The measurements given are approximate. No person in this firm's employment has the authority to make or give any representation or warranty in respect of the property.

