



**P** Permit holders only  
WT  
Mon - Sat  
8.30 am - 6.30 pm

**Websters**  
estate agents

4  
3

THULE  
THULE  
Alpen 383  
SEKIDA  
559 LNE

16

14

# Gravel Road, Twickenham, TW2 6RH

Mid Terrace 4 double bedroom Victorian home in a popular residential location with a south facing garden and no onward chain. Situated just 0.2 miles from Twickenham Green, local shops and restaurants, 0.4 miles from Archdeacon and Trafalgar Primary Schools and 0.7 miles from St Richard Reynolds and Waldegrave Girls School/Co-ed Sixth Form.

Extended, loft converted and immaculately presented to offer 1415 sq ft of well balanced living space over 3 floors with high specification fixtures, fittings and floorings, traditional period features, double glazed windows and doors and contemporary decor throughout.

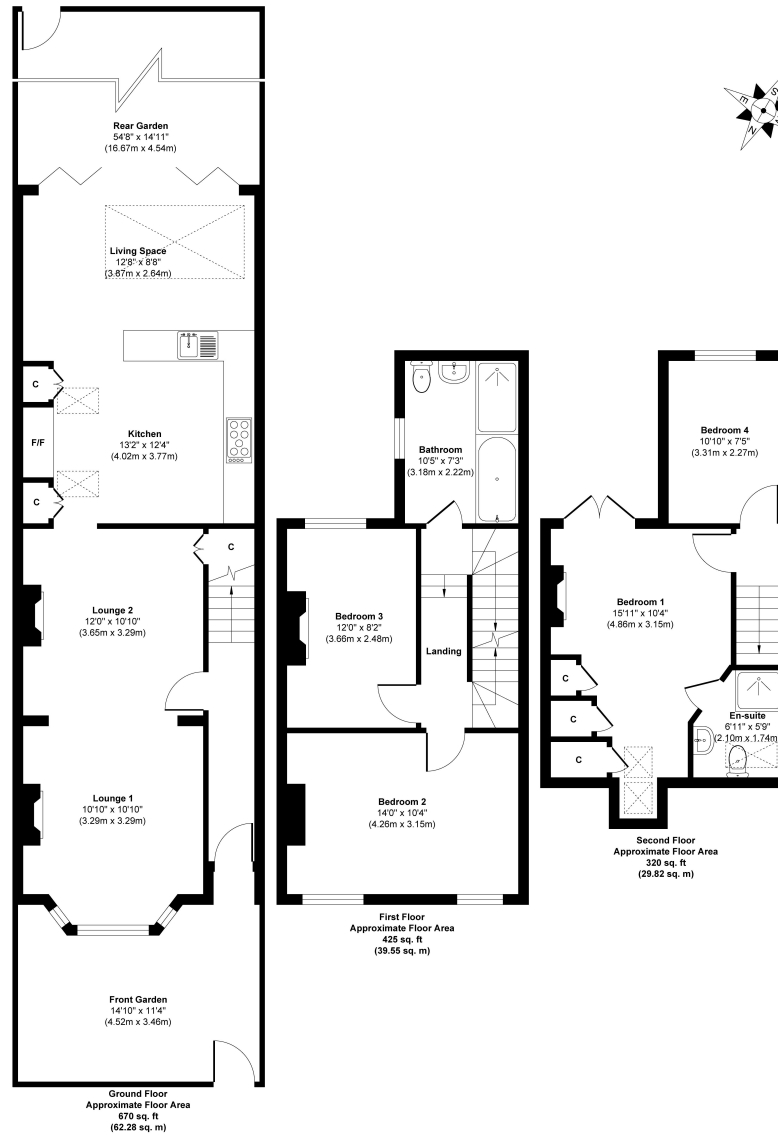
Entrance hallway leads to the bay fronted, open plan living/dining room with access to the kitchen/family room at the rear. This light filled room has velux roof windows, a stylish fitted kitchen, space for seating/dining and herringbone brick flooring which continues through the full width folding doors into the garden to create the patio which leads to the artificial lawn and gated rear access. On the first floor are 2 double bedrooms, the family bathroom and stairs up to the main bedroom with a juliet balcony and en-suite shower room and the fourth double bedroom.

Located only 0.2 miles from Kneller Gardens with a towpath bike/walking track along the River Crane to Crane Park and within 0.8 miles of Twickenham town centre and mainline train station.

EPC Rating C

- Mid Terrace 4 Bedroom Victorian Home
- No Onward Chain
- 1415 Sq Ft of Living Space over 3 Floors
- Extended and Loft Converted
- South Facing Garden with Rear Access
- Living/Dining Room and Kitchen/Family Room
- Within 0.7 Miles of Popular Schools
- 0.8 Miles from Twickenham Station





**Approx. Gross Internal Floor Area 1415 sq. ft / 131.65 sq. m**

Illustration for identification purposes only, measurements are approximate, not to scale.

Produced by Elements Property

**a** Websters Estate Agents 36 Broad Street, Teddington, Middlesex TW11 8QY

**t** 020 8614 6000

**e** sales@mywebsters.co.uk **w** mywebsters.co.uk

**Disclaimer**

These particulars, whilst believed to be accurate are set out as a general outline only for guidance and do not constitute any part of an offer or contract. Intending purchasers should not rely on them as statements of representation of fact, but must satisfy themselves by inspection or otherwise as to their accuracy. We have not carried out a detailed survey nor tested the services, appliances and specific fittings. Room sizes should not be relied upon for carpets and furnishings. The measurements given are approximate. No person in this firm's employment has the authority to make or give any representation or warranty in respect of the property.

