



23

25

Websters
estate agents

Andover Road, Twickenham, TW2 6PD

Mid Terrace 3 double bedroom Victorian home in a popular cul-de-sac location with a south facing garden and no onward chain. Situated just 0.3 miles from Twickenham Green, local shops, cafes and restaurants and 0.7 miles from Strawberry Hill train station,

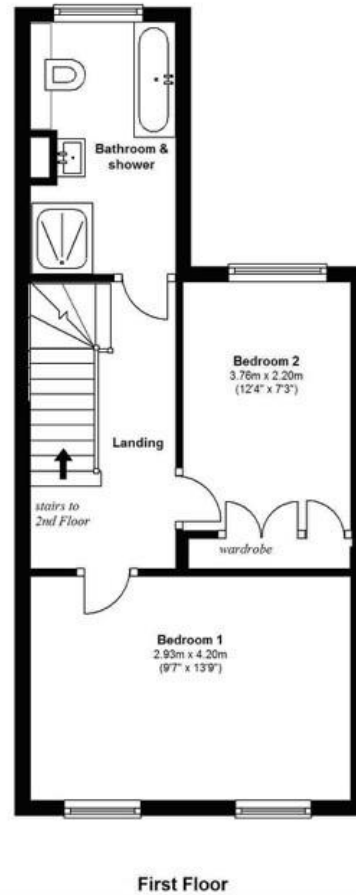
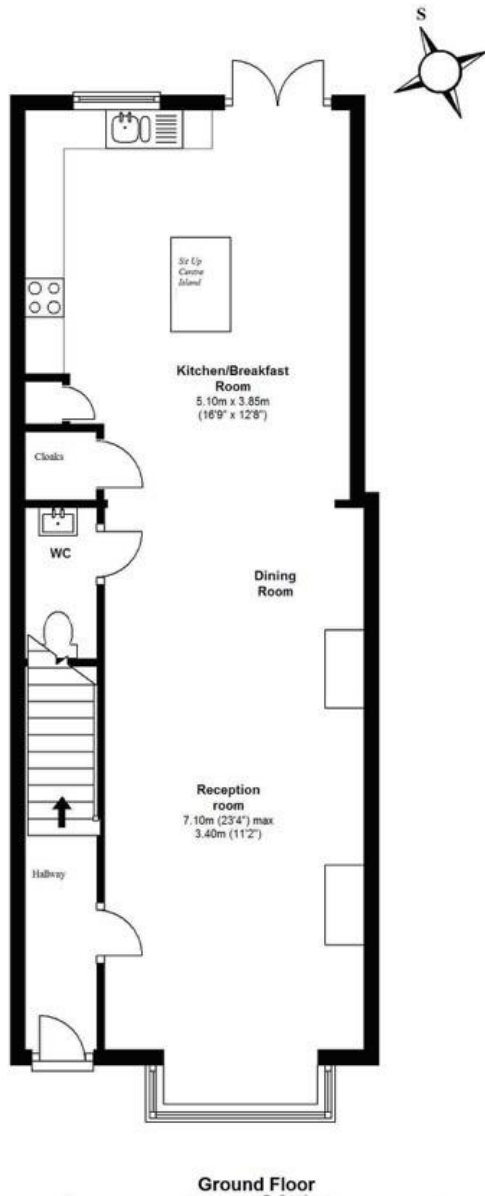
Extended at the rear and loft converted to offer 1137 sq ft of well proportioned newly decorated living space over 3 floors with high specification fixtures, fittings and floorings, double glazed sash style windows and plantation shutters.

The entrance hallway leads into the open plan living/dining room with a feature fireplace and wood flooring, a w.c and the light and spacious kitchen/breakfast room with a stylish fitted kitchen and space for dining and seating. Double doors open onto the low maintenance south facing courtyard garden. On the first floor are 2 double bedrooms and the luxury family bathroom. Stairs lead up to the main bedroom with an en-suite shower room and eaves storage

Located 0.4 miles from Archdeacon and Trafalgar Primary Schools, St Richard Reynolds and Waldegrave Girls/Co-ed Sixth Form.
EPC Rating D

- Mid Terrace Victorian Family Home
- 3 Double Bedrooms and 2 Bathrooms
- No Onward Chain
- 1137 Sq Ft of Accomodation over 3 Floors
- South Facing Low Maintenance Garden
- Open Plan Family Living Space
- Newly Decorated Throughout
- 0.7 Miles from Strawberry Hill Station





Total Floor Area approx.= 1,137 Sq.Feet (105.67 sq.metres)

a Websters Estate Agents 36 Broad Street, Teddington, Middlesex TW11 8QY t 020 8614 6000 e sales@mywebsters.co.uk w mywebsters.co.uk

Disclaimer
These particulars, whilst believed to be accurate are set out as a general outline only for guidance and do not constitute any part of an offer or contract. Intending purchasers should not rely on them as statements of representation of fact, but must satisfy themselves by inspection or otherwise as to their accuracy. We have not carried out a detailed survey nor tested the services, appliances and specific fittings. Room sizes should not be relied upon for carpets and furnishings. The measurements given are approximate. No person in this firm's employment has the authority to make or give any representation or warranty in respect of the property.

