



**CLIVEDON COURT
W13**

£385,000

Pitshanger

HIGHCLIFFE



CLIVEDON COURT, W13

£385,000



Reception Room



Kitchen



One Bedroom



Bathroom



Garage

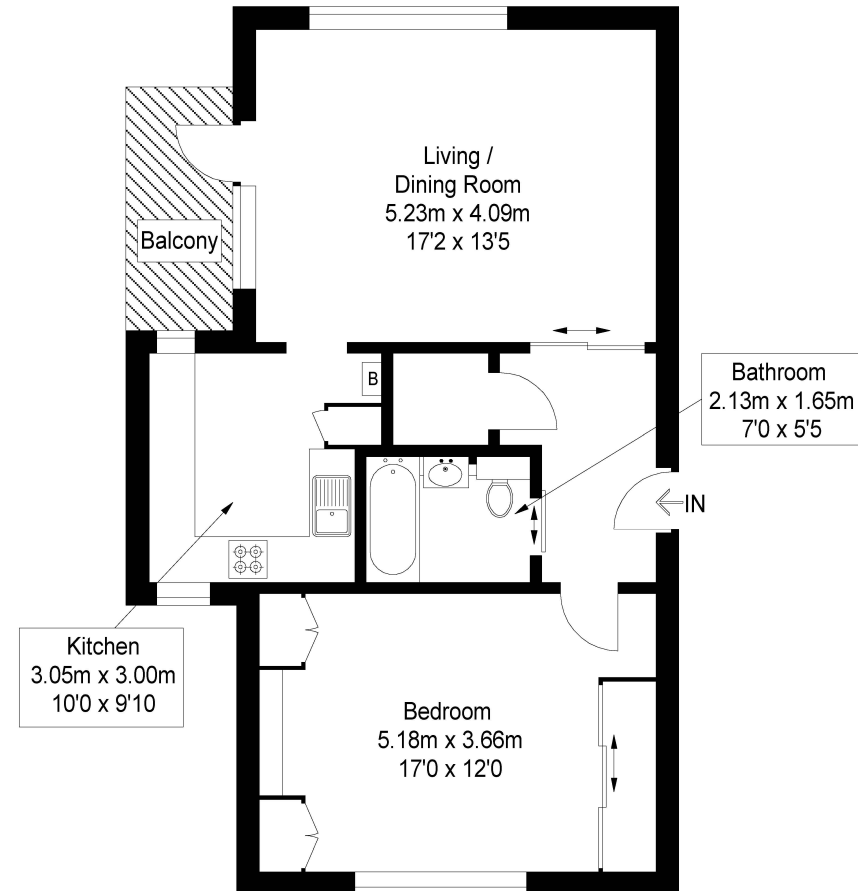
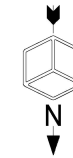
A bright and spacious one bedroom second floor apartment with a private south facing balcony, and a garage. The property offers an excellent sense of space (approximately 672 sq.ft) and benefits lots of natural light, which pours through the large windows. The aspect & views from the property are particularly nice, and there's a long lease of over 900 years unexpired.

Highcliffe is located on the sought-after Cleveland Estate, set in well-manicured communal gardens. Situated minutes from the lovely open spaces of both Cleveland and Pitshanger Parks. A short walk from Pitshanger Lane's Award Winning High Street, with its excellent local amenities including a variety of local shops, restaurants, good primary schools, and local bus services to Ealing Broadway.

EPC RATING: C
LOCAL AUTHORITY: Ealing
COUNCIL TAX BAND: C

Highcliffe, Clivedon Court Ealing

Approximate Gross Internal Area
672 sq ft / 62.4 sq m
External Balcony = 48 sq ft / 4.48 sq m



Second Floor
672 sq ft / 62.4 sq m

Cube Property Marketing © 2019
Illustration for identification purposes only,
measurements are approximate, not to scale.

Your local independent
award winning estate agents



Pitshanger

1 Albert Terrace
Ealing
London W5 1PL
Sales: 020 8998 3111
E: pitssales@northfields.co.uk

020 8998 3111

www.northfields.co.uk

MORE

TO FIND OUT

Us today

CONTACT