



Websters
estate agents

Fifth Cross Road, Twickenham, TW2 5LJ

Mid Terrace 3 bedroom home with driveway parking and a 165 ft southwesterly aspect garden. Situated just 0.1 mile from Waldegrave Girls School/Co-ed Sixth Form, 0.3 miles from Trafalgar Primary and less than 0.6 miles from St James, Stanley and Archdeacon Primary Schools.

With no onward chain and currently offering 1436 Sq ft of well proportioned living space (including the loft room) with modern fixtures and fittings, some wood flooring, double glazed windows and doors and potential to extend, re-configure the layout, modernise and fully loft convert to create a bespoke family home (subject to Planning Permission and Building Regulations)

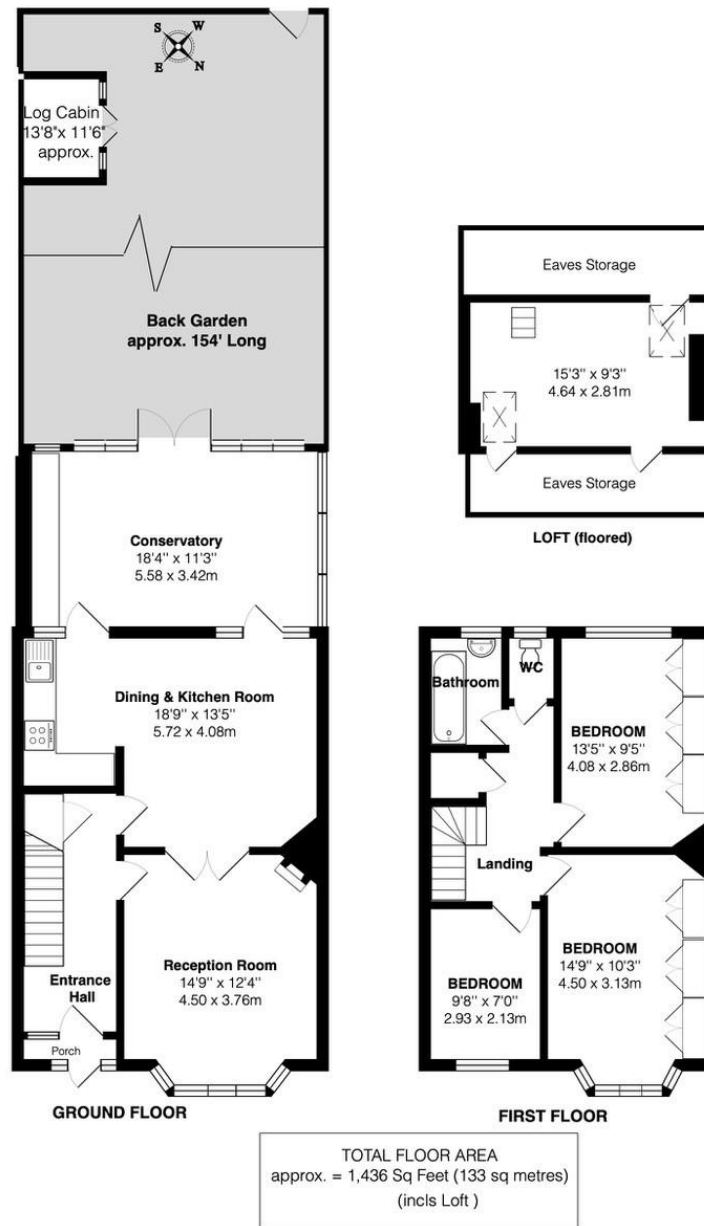
Porch opens into the hallway with doors to the bay fronted living room and the dining room with access to the kitchen and the conservatory at the rear. Double doors open onto the garden with a patio, lawn, mature planting, a summer house/home office and gated rear access. On the first floor are 3 bedrooms, the bathroom and a separate w.c. A pull down ladder leads up to the converted loft room which is ideal for use as a hobby/play room with velux roof windows and eaves storage

Located 0.4 miles from Twickenham Green, local shops bars and restaurants and only 0.6 miles from Fulwell and Strawberry Hill train stations and 0.8 miles from the A316 with direct access to the M3/M25 and central London.

EPC Rating E

- Mid Terrace 3 Bedroom Home
- 165 Ft South West Facing Garden and Driveway Parking
- 1436 Sq Ft of Living Space (including loft)
- No Onward Chain
- Potential to Extend, Loft Convert and Update (stpp)
- 0.6 Miles from Strawberry Hill Station
- Within 0.6 Miles of Numerous Popular Schools





a Websters Estate Agents 36 Broad Street, Teddington, Middlesex TW11 8QY

t 020 8614 6000

e sales@mywebsters.co.uk **w** mywebsters.co.uk

Disclaimer

These particulars, whilst believed to be accurate are set out as a general outline only for guidance and do not constitute any part of an offer or contract. Intending purchasers should not rely on them as statements of representation of fact, but must satisfy themselves by inspection or otherwise as to their accuracy. We have not carried out a detailed survey nor tested the services, appliances and specific fittings. Room sizes should not be relied upon for carpets and furnishings. The measurements given are approximate. No person in this firm's employment has the authority to make or give any representation or warranty in respect of the property.

