



Websters
estate agents

Norcutt Road, Twickenham, TW2 6SR

Mid Terrace 3 bedroom Victorian family home in a popular residential area with no onward chain. Situated just 0.2 miles from Twickenham Green, local shops, cafes and restaurants, 0.3 miles from Archdeacon and TPA and 0.6 miles from Trafalgar Primary and St Richard Reynolds Schools.

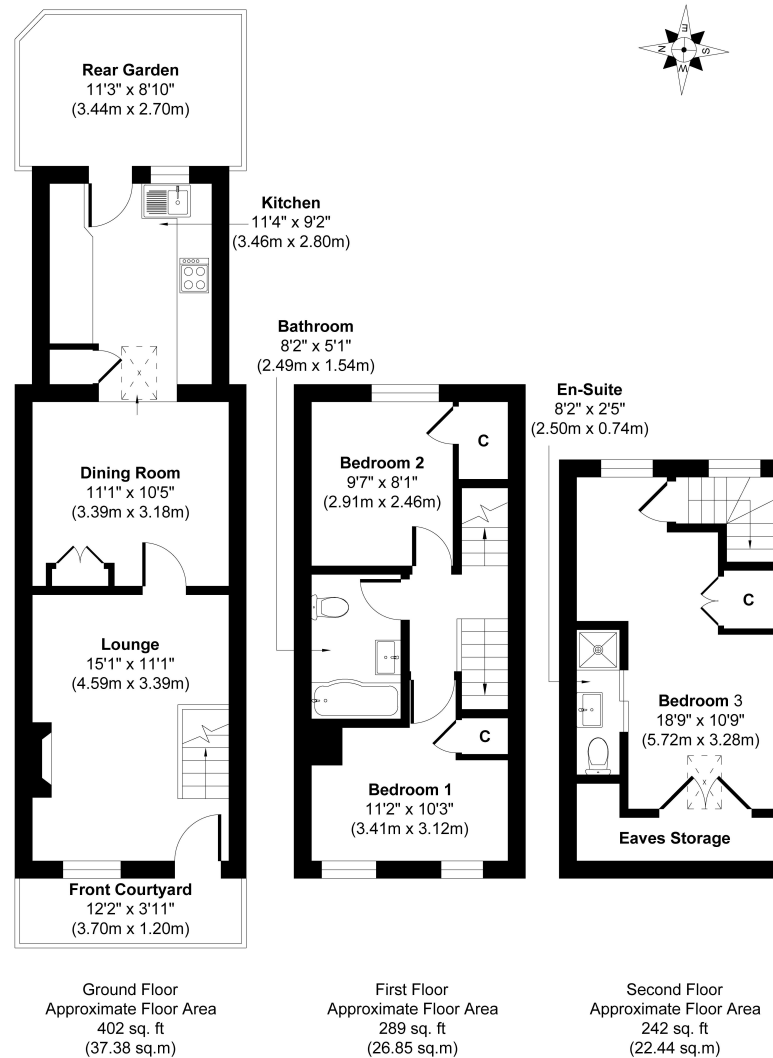
Previously extended at the rear/loft converted and recently refurbished to offer 933 sq ft of well planned living space over 3 floors with a stylish new kitchen and bathrooms, new floorings and neural decor throughout.

Front door opens into the spacious living room with a door into the family/dining room and the newly fitted kitchen at the rear. This light filled room has a stylish fitted units, energy efficient appliances, space for seating and dining and access to the courtyard garden. On the first floor are 2 bedrooms, the family bathroom and stairs to the main bedroom with an en-suite shower room and eaves storage.

Located within 0.7 miles of Twickenham town centre and station, Church Street and Thames riverside with a walking/cycle track along the river past Marble Hill Park to Richmond. EPC Rating D

- Mid Terrace Victorian Home
- 3 Bedrooms and 2 Bathrooms
- 933 Sq Ft of Living Space over 3 Floors
- No Onward Chain
- 2 Living Rooms and Kitchen
- Close to Popular Schools
- 0.7 Miles from Twickenham Station
- 0.2 Miles from Twickenham Green





a Websters Estate Agents 164 Heath Road, Twickenham, Middlesex TW1 4BN t 020 8892 3343 e sales@mywebsters.co.uk w mywebsters.co.uk

Disclaimer
 These particulars, whilst believed to be accurate are set out as a general outline only for guidance and do not constitute any part of an offer or contract. Intending purchasers should not rely on them as statements of representation of fact, but must satisfy themselves by inspection or otherwise as to their accuracy. We have not carried out a detailed survey nor tested the services, appliances and specific fittings. Room sizes should not be relied upon for carpets and furnishings. The measurements given are approximate. No person in this firm's employment has the authority to make or give any representation or warranty in respect of the property.

