



Northfields

HOLYOAKE WALK
W5

£300,000

Pitshanger



HOLYOAKE WALK, W5

£300,000



18ft Reception Room



Open Plan Kitchen



One Bedroom



Bathroom



On-Street Parking

A bright one bedroom first floor flat boasting an 18ft reception room with open plan kitchen. This well presented flat forms part of Holyoake House, an Edwardian built block of flats located in the heart of the much sought after Brentham Garden Estate.

Holyoake walk is in the heart of Ealing's Historic Brentham Garden Estate, a conservation area of architectural merit. The property is located just off Pitshanger Lane's Award Winning High Street, with its excellent local amenities including a variety of local shops, restaurants, and local bus services to Ealing Broadway. The open spaces of Pitshanger Park are close by.

EPC RATING: TBC

LOCAL AUTHORITY: Ealing

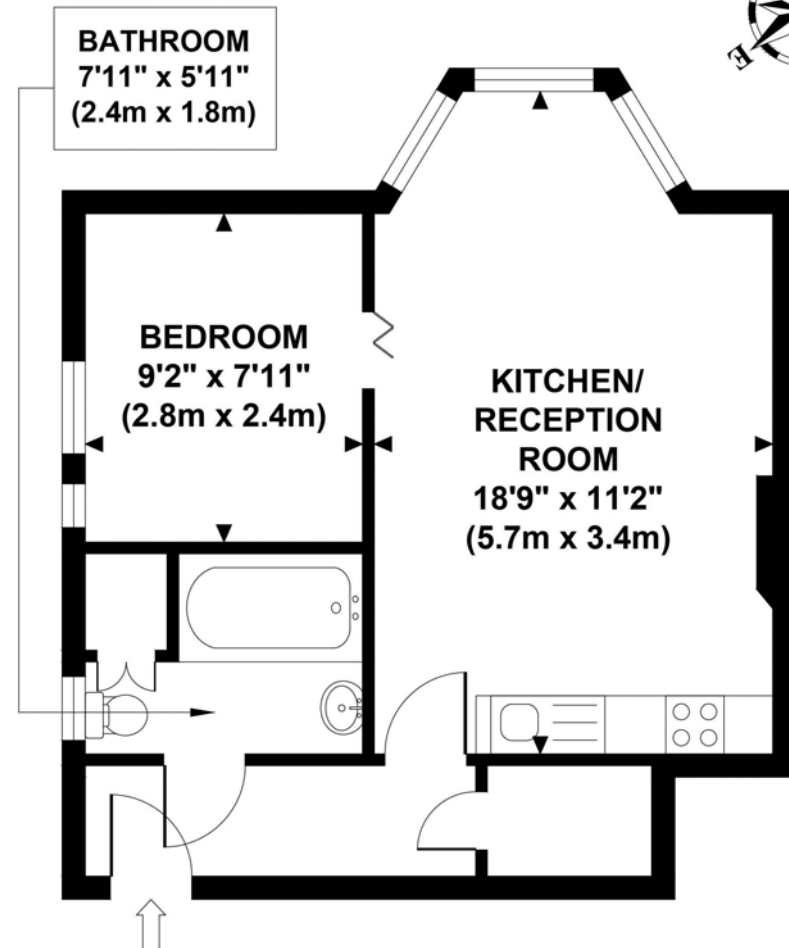
COUNCIL TAX BAND: C

LENGTH OF LEASE: 125 years from 24 June 2004

You may wish to instruct us about a related service, including: the sale and letting of residential and commercial property, the provision of mortgage and financial services, conveyancing and property management. Where you choose to use other services, Northfields or its employees may receive a fee or commission which will be disclosed to you.

HOLYOAKE HOUSE

Approximate Gross Internal Area
370 sq ft / 34.40 sq m



**FIRST FLOOR
GROSS INTERNAL
FLOOR AREA 370 SQ FT**

Although every attempt has been made to ensure accuracy, all measurements are approximate and no responsibility is taken for any error, omission, or mid-statement. This floor plan is for illustrative purposes only and not to scale. Measured in accordance to RICS standards.
GB PRO PHOTOS

Your local independent
award winning estate agents



Pitshanger

1 Albert Terrace
Ealing
London W5 1RL
Sales: 020 8998 3111
E: pitssales@northfields.co.uk

020 8998 3111

www.northfields.co.uk

CONTACT

Us today

TO FIND OUT

MORE