



Websters
estate agents
020 8886 3344
websters.co.uk For Sale

49

Websters
estate agents

Warwick Road, Twickenham, TW2 6SW

End of Terrace Victorian 2 double bedroom cottage in a popular cul-de-sac location with a west facing garden. Situated just 0.3 miles from Twickenham Green, local shops and restaurants, 0.4 miles from Archdeacon Primary and St Richard Reynolds and 0.6 miles from Trafalgar Primary Schools.

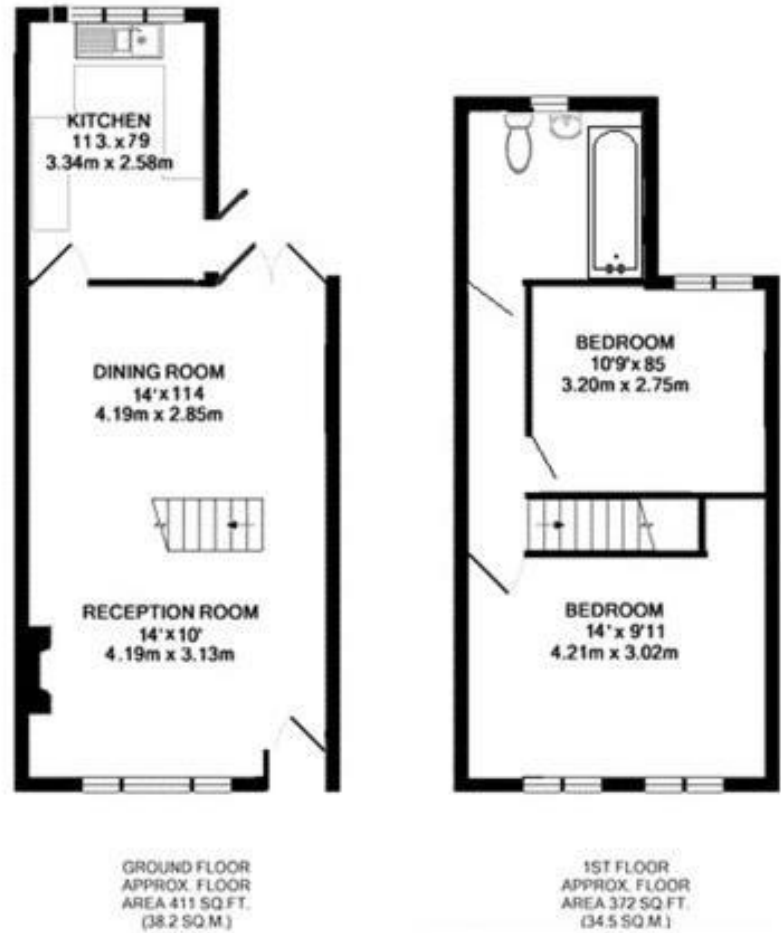
Tastefully presented to offer 783 sf ft of well balanced living space over 2 floors with modern fixtures and fittings, wood flooring downstairs, double glazed windows and doors and pleasing neutral decor throughout.

Front door opens into the dining room with access to the family/living room with space for seating, storage and large doors overlooking the garden. The separate kitchen at the rear has stylish fitted units and a door at the side opening onto the garden with mature planting and gated side access. On the first floor are 2 double bedrooms, the family bathroom and hatch access to loft storage.

Located 0.5 miles from Twickenham town centre and just 0.7 miles from Strawberry Hill and Twickenham mainline train stations.
EPC Rating D

- End of Terrace Victorian Home
- 2 Bedrooms and Upstairs Bathroom
- West Facing Garden with Side Access
- 783 Sq Ft of Living Space over 2 Floors
- Tastefully Presented Throughout
- 0.3 Miles from Twickenham Green
- 0.7 Miles from Twickenham Station





WARWICK ROAD, TWICKENHAM, TW2 6SW
TOTAL APPROX. FLOOR AREA 783 SQ. FT. (72.7 SQ. M.)

a Websters Estate Agents 164 Heath Road, Twickenham, Middlesex TW1 4BN t 020 8892 3343 e sales@mywebsters.co.uk w mywebsters.co.uk

Disclaimer
These particulars, whilst believed to be accurate are set out as a general outline only for guidance and do not constitute any part of an offer or contract. Intending purchasers should not rely on them as statements of representation of fact, but must satisfy themselves by inspection or otherwise as to their accuracy. We have not carried out a detailed survey nor tested the services, appliances and specific fittings. Room sizes should not be relied upon for carpets and furnishings. The measurements given are approximate. No person in this firm's employment has the authority to make or give any representation or warranty in respect of the property.

