



LARDEN ROAD
W3

£750,000

Shepherds Bush



LARDEN ROAD, W3

£750,000



Reception Room



Kitchen Diner



Three Bedrooms



Two Bathrooms



On Street

This a stylish split level, three double bedroom, two-bathroom, first-floor period maisonette situated on the Chiswick Borders offering over 1130sq ft of living accommodation and 46ft private garden.

The first floor boasts a bright spacious reception room and a fully fitted modern kitchen diner with stairs to the private garden. The flat is beautifully presented throughout boasting three double bedrooms with ample storage solutions and two well-appointed luxury bathrooms.

It offers the ideal space for family living and further options for entertaining inside and out.

Larden Road is located in a sought-after residential area, moments from the popular Wendell Park. Ideally situated for the many independent shops, restaurants, and cafes on Askew Road, and within easy reach of the wider range of amenities on both Chiswick High Road and Uxbridge Road.

Local transport links include Turnham Green (District & Piccadilly) and Acton Central Overground) stations.

EPC RATING: D

LOCAL AUTHORITY: London Borough of Hammersmith and Fulham

COUNCIL TAX BAND: D

TENURE: Share of Freehold

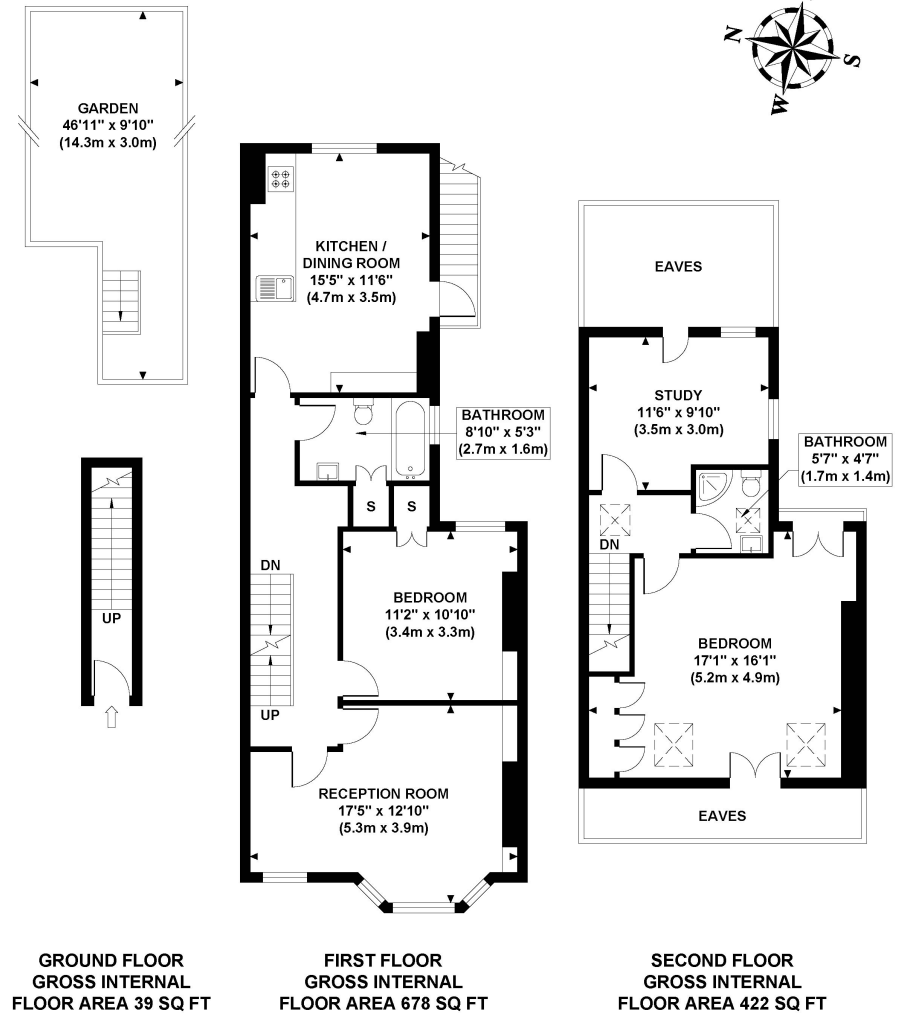
You may wish to instruct us about a related service, including: the sale and letting of residential and commercial property, the provision of mortgage and financial services and/or conveyancing. Where you choose to use other services, Northfields or its employees may receive a fee or commission which will be disclosed to you.

Under The Consumer Protection from Unfair Trading Regulations 2008, these particulars are a guide and act as information only. All details are given in good faith and are believed to be correct at the time of printing. Northfields give no representation as to their accuracy and potential purchasers or tenants must satisfy themselves by inspection or otherwise as to their correctness. No employee of Northfields has authority to make or give any representation or warranty in relation to this property.

LARDEN ROAD
Approximate Gross Internal Area
1139 sq ft / 105.80 sq m



Northfields



Although every attempt has been made to ensure accuracy, all measurements are approximate and no responsibility is taken for any error, omission, or mid-statement. This floor plan is for illustrative purposes only and not to scale. Measured in accordance to RICS standards. GB PRO PHOTOS

Your local independent award winning estate agents



Shepherds Bush

127 Askew Road,
Shepherds Bush W12 9AU
Sales: 020 8740 8833
E: sbsales@northfields.co.uk

020 8740 8833

www.northfields.co.uk

CONTACT

Us today

TO FIND OUT

MORE