





# Wellesley Road, Strawberry Hill, TW2 5SH

First and Second Floor 2 bedroom Maisonette in a popular Strawberry Hill development with private access from an external first floor walkway and use of communal gardens. Situated less than 0.1 miles from Strawberry Hill train station and local shops and just 0.4 miles from Twickenham Green.

With no onward chain and a long Lease. Tastefully presented to offer 654 sq ft of well proportioned, newly redecorated living space over 2 floors with modern fixtures and fittings, new carpets throughout and large double glazed windows.

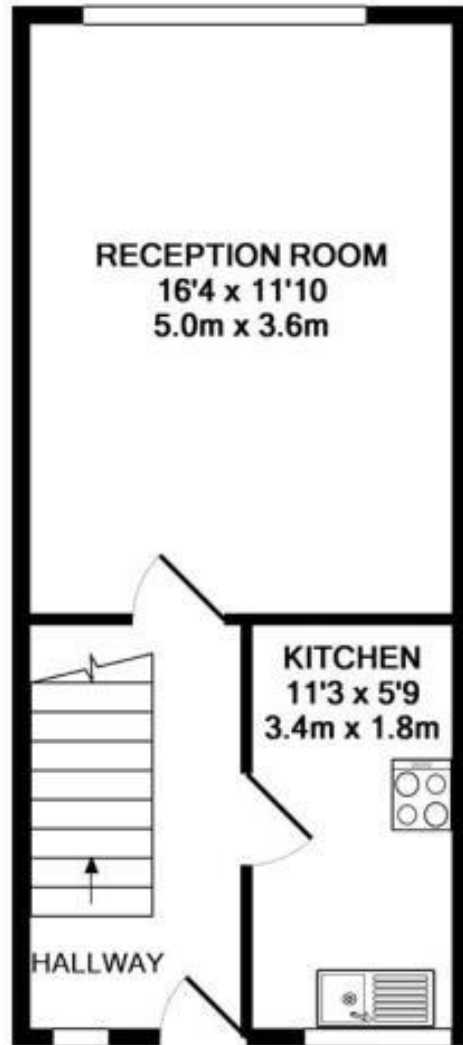
Spacious entrance hallway leads to the fitted kitchen and the living room with space for seating and dining. Stairs lead up to the 2 double bedrooms, the bathroom and separate w.c.

Located 0.4 miles from Thames Riverside Radnor Gardens and 0.8 miles from Twickenham town centre shops, cafes and restaurants.

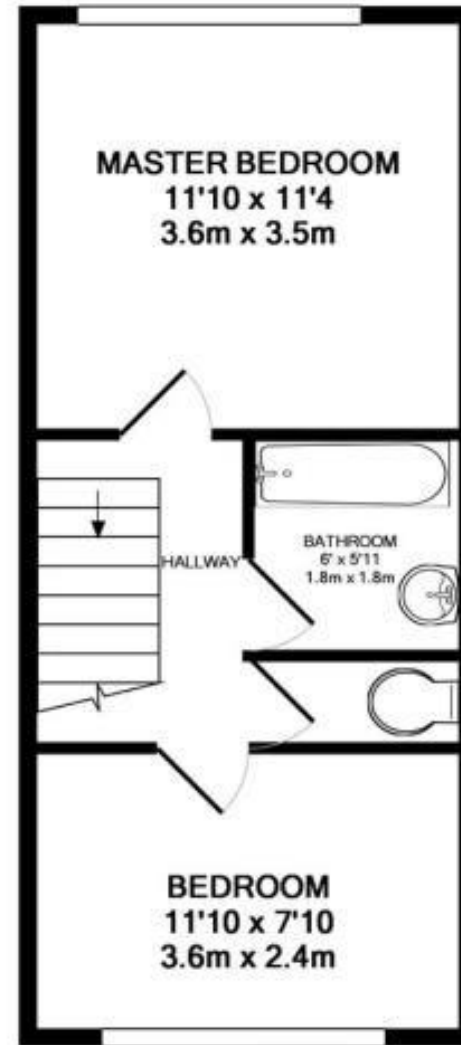
EPC Rating D

- First and Second Floor Maisonette
- 2 Double Bedrooms
- No Onward Chain and Long Lease
- Newly Decorated Throughout
- 654 Sq Ft of Living Space over 2 Floors
- 0.4 Miles from Twickenham Green
- 0.1 Mile from Strawberry Hill Station





APPROX. FLOOR  
AREA 327 SQ.FT.  
(30.4 SQ.M.)



APPROX. FLOOR  
AREA 327 SQ.FT.  
(30.4 SQ.M.)

TOTAL APPROX. FLOOR AREA 654 SQ.FT. (60.7 SQ.M.)

a Websters Estate Agents 36 Broad Street, Teddington, Middlesex TW11 8QY t 020 8614 6000 e sales@mywebsters.co.uk w mywebsters.co.uk

**Disclaimer**

These particulars, whilst believed to be accurate are set out as a general outline only for guidance and do not constitute any part of an offer or contract. Intending purchasers should not rely on them as statements of representation of fact, but must satisfy themselves by inspection or otherwise as to their accuracy. We have not carried out a detailed survey nor tested the services, appliances and specific fittings. Room sizes should not be relied upon for carpets and furnishings. The measurements given are approximate. No person in this firm's employment has the authority to make or give any representation or warranty in respect of the property.



