



Northfields

KINGFIELD ROAD
W5

£899,950

Ealing



KINGFIELD ROAD, W5

£899,950



Two Reception Rooms



Kitchen



Three Bedrooms



Bathroom



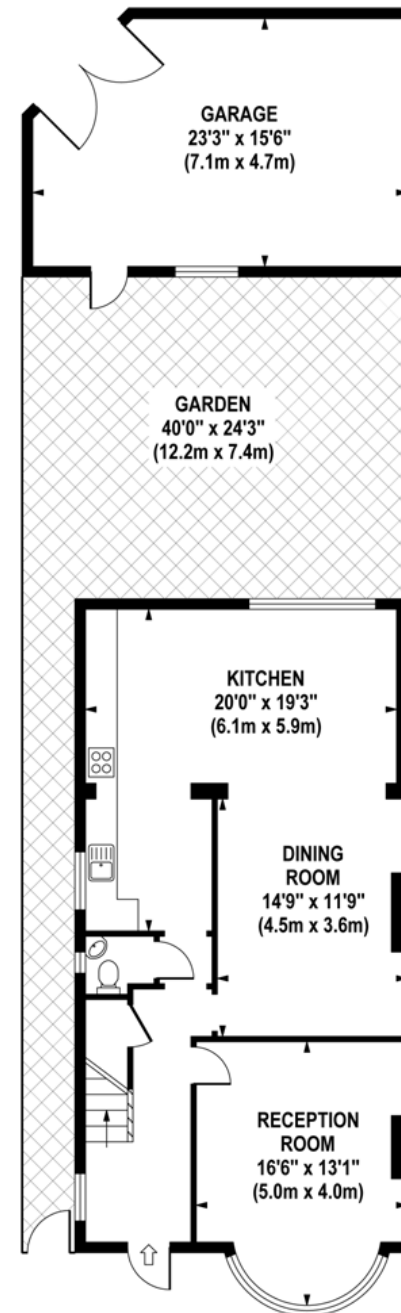
Off Street Parking

A three bedroom end of terrace house with rear extension, extra-large garage and off street parking on the front drive. The property offers good space for entertaining, there's a 16ft reception room with bay window and a rear reception room which leads on to a spacious kitchen/dining area. Outside there's a pretty low maintenance 40ft rear garden.

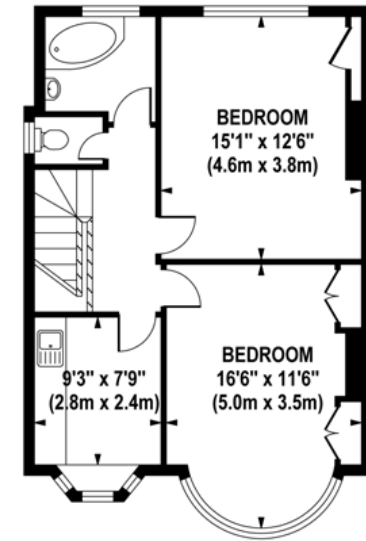
Kingfield Road is a quiet residential street, well placed for Hanger Lane underground, and Pitshanger Lanes award winning high street. The property also falls in the catchment area for the outstanding Montpelier primary school.

EPC RATING: D
LOCAL AUTHORITY: Ealing
COUNCIL TAX BAND: F

KINGFIELD ROAD
Approximate Gross Internal Area 1405 sq ft / 130.5 sq m



GROUND FLOOR
GROSS INTERNAL
FLOOR AREA 807 SQ FT



FIRST FLOOR
GROSS INTERNAL
FLOOR AREA 598 SQ FT

Although every attempt has been made to ensure accuracy, all measurements are approximate. The floor plan's for illustrative purposes only and not to scale. Measured in accordance to RICS standards.

DE-PHOTOGRAPHY.NET

Your local independent award winning estate agents



Pitshanger

1 Albert Terrace
Ealing
London W5 1RL
Sales: 020 8998 3111
E: pitssales@northfields.co.uk

020 8998 3111

www.northfields.co.uk

CONTACT

Us today

TO FIND OUT

MORE