



14 VIRGINIA BEECHES

VIRGINIA WATER

BUCKINGHAMS



14 Virginia Beeches

Callow Hill • Virginia Water • Surrey • GU25 4LT

£475,000

A spacious two bedroom, two bathroom ground apartment situated in a gated retirement complex for the over 55's with mature communal grounds of circa ten acres.



- 2 BEDROOMS
- 2 BATH/SHOWER ROOMS
- 1 RECEPTION ROOM
- 1141 SQUARE FEET
- EN BLOC SINGLE GARAGE
- PRIVATE BALCONY/TERRACE
- SOUTHERLY FACING
- GATED DEVELOPMENT FOR OVER 55'S

ENTRANCE HALL • KITCHEN • DRAWING/DINING ROOM OPENING ONTO THE PRIVATE TERRACE • STUDY AREA • MASTER BEDROOM WITH EN SUITE SHOWER ROOM • SECOND BEDROOM • FAMILY BATHROOM • EN BLOC GARAGE WITH ELECTRIC DOOR

Description

14 Virginia Beeches is a well presented apartment providing just over 1100 square feet of well-planned yet versatile living accommodation. The property has recently had two bath/shower rooms refitted and benefits from a large drawing/dining room with patio doors opening onto the private southerly facing terrace overlooking mature gardens. Virginia Beeches has a communal resident's lounge (available for private at community functions) as well as access to the 'visitors apartment' should you have additional friends/family wanting to come an stay.

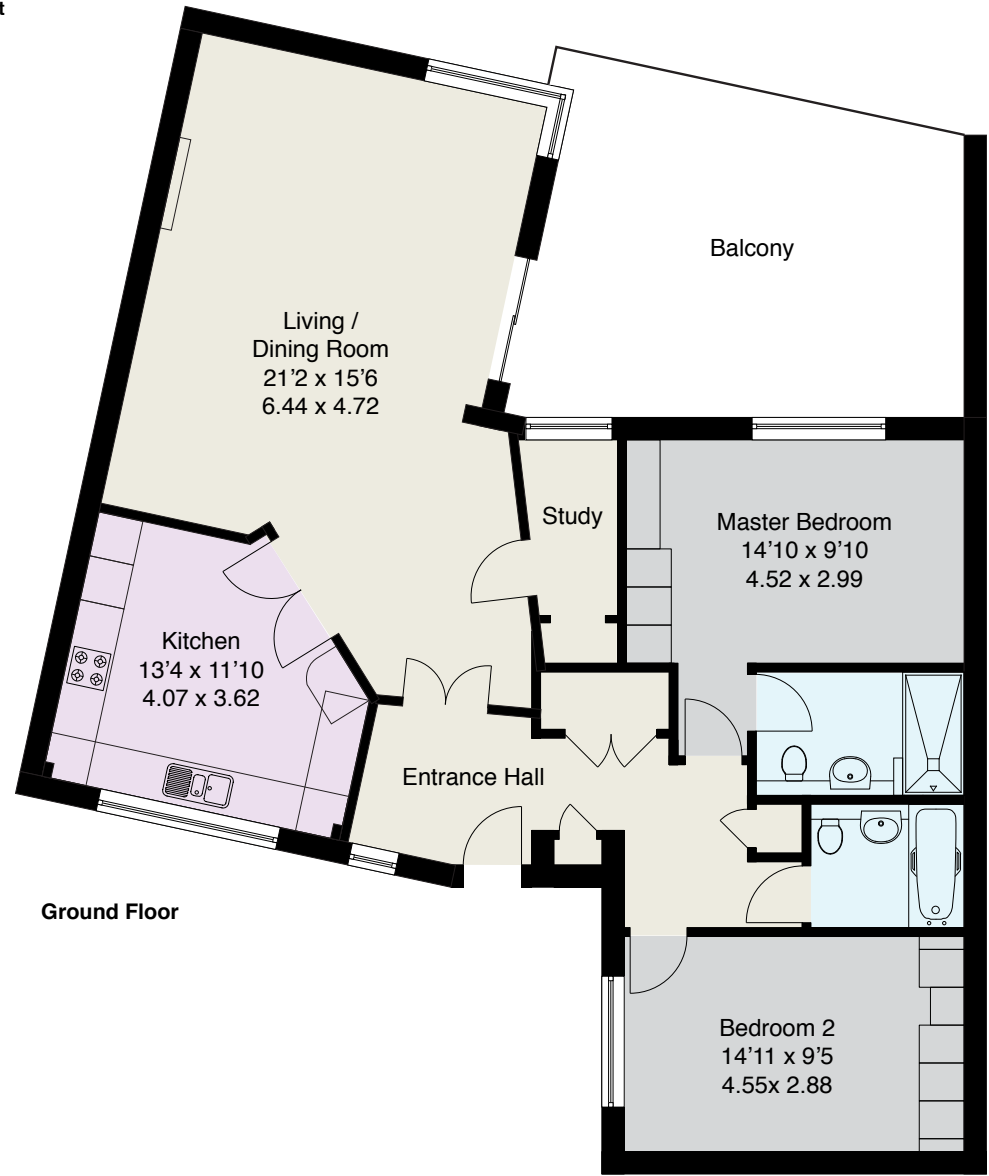
Directions

From our office on Station Approach, Virginia Water, turn left onto Christchurch Road and at the roundabout take the fourth exit onto Callow Hill. At the top of the hill Virginia Beeches shall be found on the left hand side and where the entrance road splits bear right, continue until the road bears left; No. 14 will be found at the bottom on the left.





Approximate Gross Internal Floor Area :
Total 106 sq m / 1141 sq ft



EPC: D65

Important Notice

These particulars and measurements are believed to be correct but their accuracy is not guaranteed by the Vendor or Vendor's Agents and they do not constitute any part of a contract. It is not our Company Policy to test services and domestic appliances so we cannot verify that they are in working order. The buyer is advised to obtain verification from their Solicitor or Surveyor.

Ref: 14VBB010408172 HPI ©2017 Not to Scale. Any Areas, measurements or distances given are maximum and approximate only, no decisions without checking should be made when reliant upon them.

01344 845050



6 STATION APPROACH, VIRGINIA WATER, SURREY GU25 4DL • sales@buckinghamshams.com • www.buckinghamshams.com



BUCKINGHAMS