



The Mansion, Bingley,
BD16 4UF
£125,000

1 Bedroom Flat
EPC Rating: D

LINLEY &
SIMPSON

*****First Time Buyer Alert***** A particularly appealing second floor duplex apartment within this splendid Grade II Listed conversion, providing tastefully presented one bedroom accommodation within delightful grounds in a lovely residential area on the fringe of Bingley. With gas central heating, comprises; entrance hall, very spacious open plan sitting room and dining room, attractive fitted kitchen, generous double bedrooms to upper floor, bathroom. Delightful communal grounds, allocated parking. The property is ideally located in a particularly convenient location in a sought after neighbourhood off Lady Lane, a quiet and superior area yet close to Bingley town centre and handy for the excellent range of shops, restaurants and recreational facilities that are available. A splendid range of schooling options are close by, as is the delightful countryside that surrounds Bingley. For commuting purposes, the excellent road network along with the efficient and frequent rail links from Bingley station ensure that the city centres of Leeds and Bradford are within easy daily commuting distance.

Accommodation

Entrance Hall

From the communal hallway is a private entrance hall provided space for coats and shoes and giving access to the living room.

Living Room

Spacious living space comprising two large windows, gas central heating radiator, access to stairs to first floor and kitchen with understairs storage cupboard.

Kitchen

Modern, fully fitted kitchen with a mixture of wall and base units, integral appliances including fridge freezer, washing machine, electric fan oven and hob with extractor fan over, stainless steel sink and drainer and gas central heating radiator.

First Floor

Principle Bedroom

The main bedroom is substantial in size with gas central heating radiators, original windows allowing ample natural light, built in storage and access to bathroom.

Bathroom

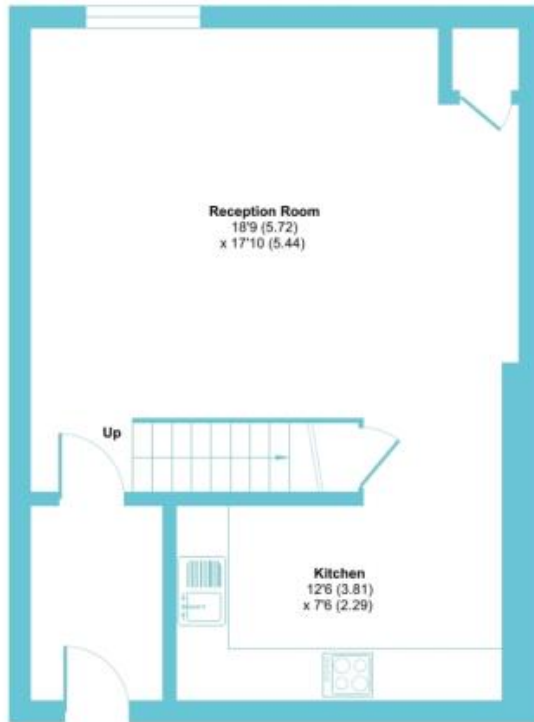
Full tiled bathroom comprising a three piece suite which consists of a pedestal w.c., wash hand basin with mixer taps and a bath with shower over.



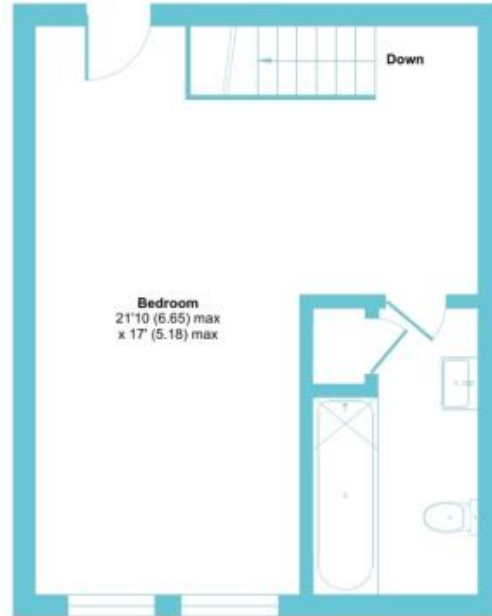
Lady Lane, Bingley, BD16

Approximate Area = 855 sq ft / 79 sq m

For identification only - Not to scale



GROUND FLOOR



FIRST FLOOR



Floor plan produced in accordance with RICS Property Measurement Standards incorporating International Property Measurement Standards (IPMS2 Residential). © nacheom 2022.
Produced for Linley & Simpson, REF: 825887

AGENTS NOTES:

Referral fees:

We may receive a commission, payment, fee or reward (known as a Referral Fee) from ancillary providers for recommending their service to you. Whilst we offer these services, as we believe you may benefit from them, you are under no obligation to use these services and you should consider your options before accepting any third parties terms and conditions.

Conveyancing: We routinely refer buyers to a panel of conveyancers and offer a complimentary value-add conveyancing comparison service. This service is provided to help you get legally prepared for purchase. Please note, information is provided for your convenience only and we do not recommend or endorse any third-party providers or services. You can decide whether you choose to deal with this panel of conveyancers. Should you decide to use one of the panel conveyancers, we will receive a referral fee of £250 from them for recommending you to them. You will need to enter into separate legal agreements with any third parties you engage, and we encourage you to read the terms and conditions of service and privacy policies of any service provider you instruct to assist you with your house sale (and purchase if applicable). Full details of the referral payment will be confirmed within the Client Care letter of the chosen panel member.

Mortgage Advice Bureau (MAB): We routinely refer buyers to MAB. You can decide whether you choose to deal with MAB. Should you decide to use MAB, Linley and Simpson Group will receive a payment of £250 from MAB for recommending you to them.