



Websters
estate agents

High Street, Teddington, TW11 8HH

Mid Terrace Grade II Listed 18th Century Peg Woffington Cottage built in 1759 and known as Peg Woffington tea rooms until 2004. Situated in central Teddington within 0.2 miles of Udney Hall Gardens, the Landmark centre, shops, cafes and restaurants, 0.5 miles from Teddington train station and 0.6 miles from Bushy Park

With no onward chain and offering an exciting opportunity to restore an important and historic property to create a stunning family home. In need of complete and extensive internal and external repairs/updating (all subject to Listed Building consent and planning) with original features throughout, a part walled westerley aspect garden and 1496 sq ft of living space arranged over 3 floors.

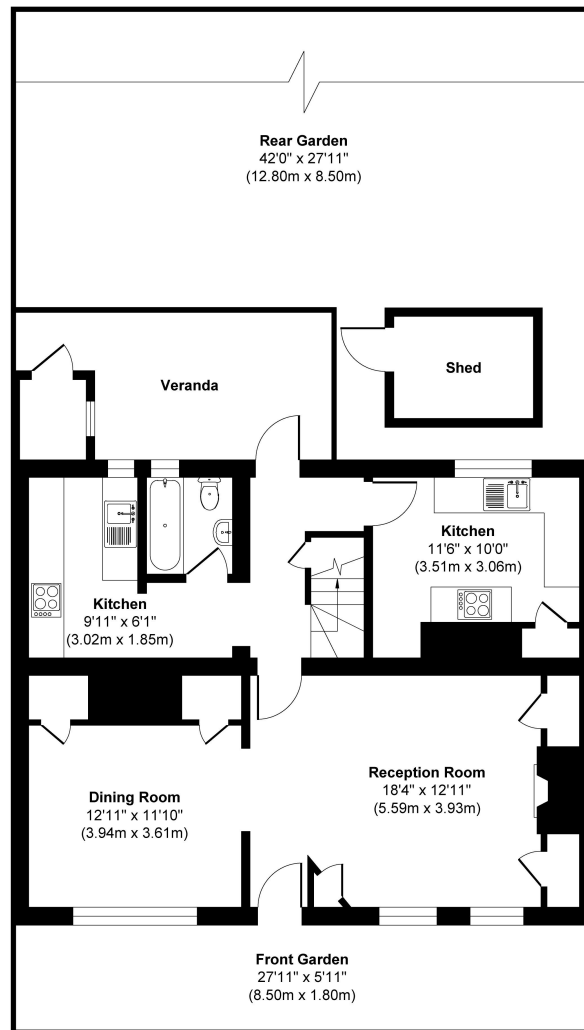
Front door opens into the living room arranged across the front of the house and the hallway with doors to the 2 kitchen areas, the bathroom and the garden. Stairs lead up to 4 bedrooms arranged over the first and second floors

Located 0.2 miles from Teddington footbridge across the Thames to the Lock, Ham Lands and towpath walk/cycle track to Hampton Court and Richmond and within 0.7 miles of St Marys & St Peters, Sacred Heart, Collis and Newland House Schools
EPC Rating E

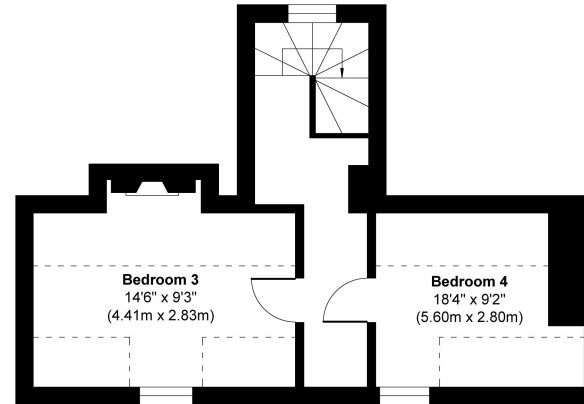
- Grade II Listed 4 Bedroom Property
- Historic Peg Woffington Cottage
- No Onward Chain
- In Need of Complete Renovation
- 1496 Sq Ft of Living Space over 3 Floors
- Within 0.2 Miles of Town Centre and River Thames
- 0.5 Miles from Teddington Station



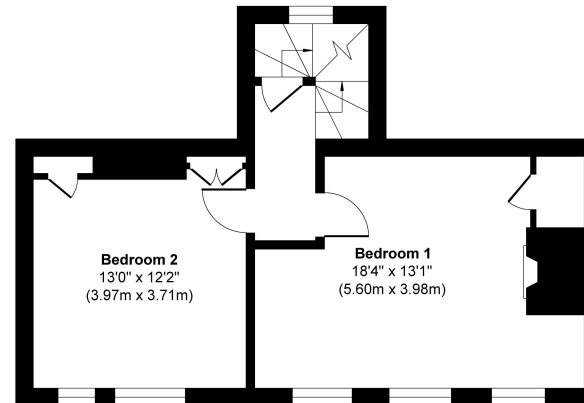
High Street, TW11



Ground Floor
Approximate Floor Area
716 sq. ft
(66.51 sq.m)



Second Floor
Approximate Floor Area
355 sq. ft
(33.03 sq.m)



First Floor
Approximate Floor Area
425 sq. ft
(39.46 sq.m)

Approx. Gross Internal Floor Area 1496 sq. ft / 139.00 sq. m

a Websters Estate Agents 36 Broad Street, Teddington, Middlesex TW11 8QY

t 020 8614 6000

e sales@mywebsters.co.uk **w** mywebsters.co.uk

Disclaimer

These particulars, whilst believed to be accurate are set out as a general outline only for guidance and do not constitute any part of an offer or contract. Intending purchasers should not rely on them as statements of representation of fact, but must satisfy themselves by inspection or otherwise as to their accuracy. We have not carried out a detailed survey nor tested the services, appliances and specific fittings. Room sizes should not be relied upon for carpets and furnishings. The measurements given are approximate. No person in this firm's employment has the authority to make or give any representation or warranty in respect of the property.

