



Perigan Court
13 - 18

Websters
estate agents

Churchview Road, Twickenham, TW2 5BT

Ground Floor 3 bedroom purpose built apartment in a popular and quiet cul-de-sac location within 0.4 miles of Twickenham Green, local shops, cafes, restaurants and Archdeacon, Trafalgar, TPA and Waldegrave Girls/Co-ed Sixth Form Schools.

Immaculately presented throughout to offer 634 Sq ft of living space with modern fixtures and fittings, recently refurbished kitchen and bathroom, new carpets in the bedrooms, double glazed windows and doors, secure entry phone system and direct access to the communal gardens.

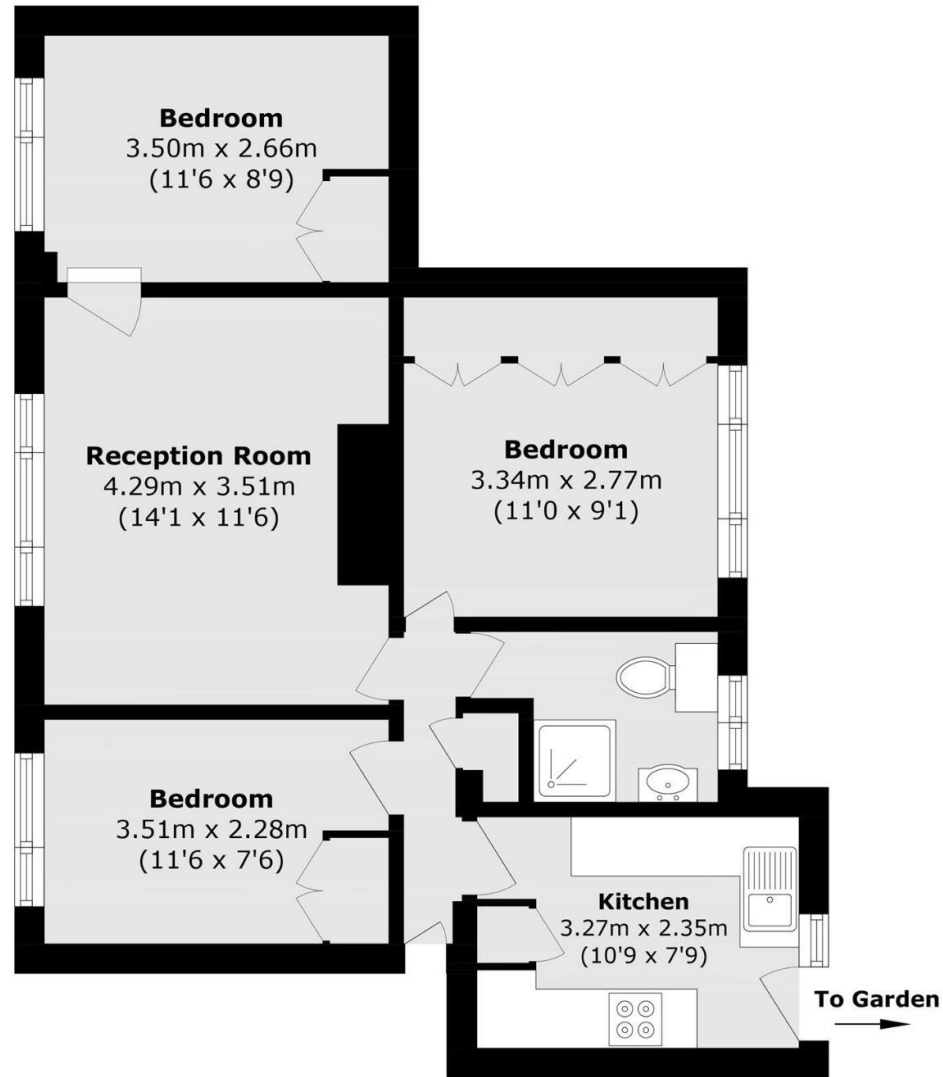
Entrance hallway leads to 2 double bedrooms with built in storage, the shower room, the stylish integrated kitchen with a door onto the gardens and the spacious living room with wood flooring, a feature fireplace, space for seating and dining and a door into the 3rd bedroom.

Located just 0.4 miles from a walking/cycle track along the River Crane to Crane Park and into Twickenham and only 0.8 miles from Twickenham town centre and Strawberry Hill Train Station.

EPC Rating C

- Ground Floor 3 Bedroom Apartment
- Direct Access to Communal Gardens
- Immaculately Presented Throughout
- 634 Sq Ft of Living Space
- Quiet Residential Location
- Within 0.4 Miles of Popular Schools
- 0.8 Miles from Strawberry Hill Station





Total area (approx.): 58.7 sq. m (631.8 sq. ft)

a Websters Estate Agents 36 Broad Street, Teddington, Middlesex TW11 8QY

t 020 8614 6000

e sales@mywebsters.co.uk **w** mywebsters.co.uk

Disclaimer

These particulars, whilst believed to be accurate are set out as a general outline only for guidance and do not constitute any part of an offer or contract. Intending purchasers should not rely on them as statements of representation of fact, but must satisfy themselves by inspection or otherwise as to their accuracy. We have not carried out a detailed survey nor tested the services, appliances and specific fittings. Room sizes should not be relied upon for carpets and furnishings. The measurements given are approximate. No person in this firm's employment has the authority to make or give any representation or warranty in respect of the property.

