



6

Websters
estate agents

Websters
estate agents

Grove Road, Twickenham, TW2 5NH

Mid Terrace double fronted 2 bedroom Victorian cottage in a small residential cul-de-sac with a south facing garden. Situated 0.2 miles from local shops, St James Primary and Waldegrave Girls School/Co-ed Sixth Form and just 0.4 miles from Stanley Primary School and Fulwell train station.

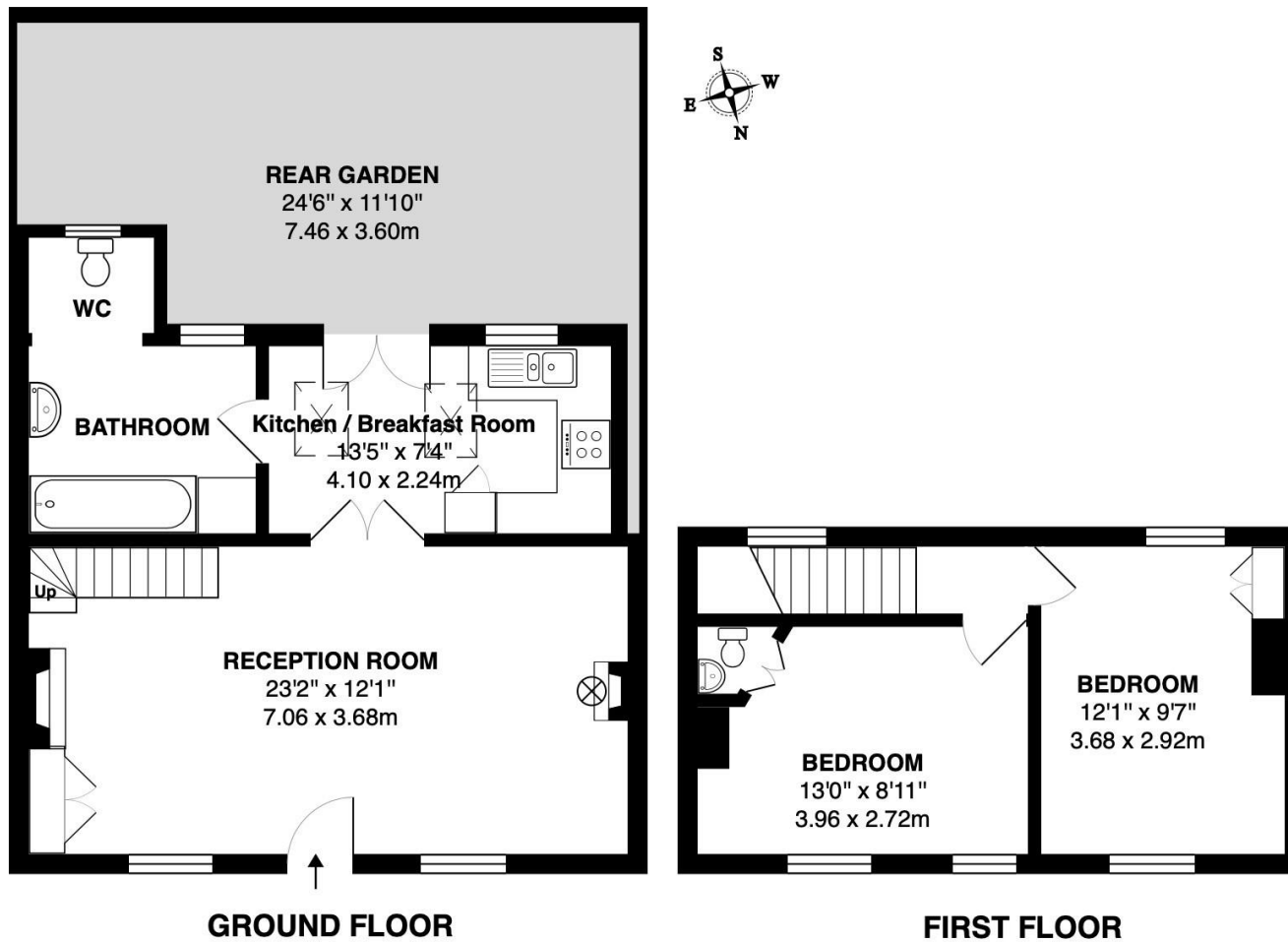
With no onward chain and in need of some updating this attractive property offers 732 sq ft of living space over 2 floors with potential to extend at the rear, reconfigure the layout and create a stunning bespoke family home (subject to Planning Permission and Building Regulations)

Front door opens into the living room with doors to the kitchen/breakfast room and bathroom at the rear. Double doors open onto the low maintenance garden with new fencing and shed storage. On the first floor are 2 double bedrooms and access to loft storage

Located within 0.6 miles of Twickenham Green shops, bars and restaurants and Strawberry Hill train station.
EPC Rating E

- Attractive Mid Terrace Victorian Cottage
- 2 Double Bedrooms
- No Onward Chain
- Potential to Extend (stpp)
- South Facing Garden
- Close to Numerous Popular Schools
- 0.6 Miles from Twickenham Green





TOTAL FLOOR AREA approx.= 732 Sq.Feet (68 sq metres)

a Websters Estate Agents 164 Heath Road, Twickenham, Middlesex TW1 4BN t 020 8892 3343 e sales@mywebsters.co.uk w mywebsters.co.uk

Disclaimer
 These particulars, whilst believed to be accurate are set out as a general outline only for guidance and do not constitute any part of an offer or contract. Intending purchasers should not rely on them as statements of representation of fact, but must satisfy themselves by inspection or otherwise as to their accuracy. We have not carried out a detailed survey nor tested the services, appliances and specific fittings. Room sizes should not be relied upon for carpets and furnishings. The measurements given are approxiamte. No person in this firms employment has the authority to make or give any representation or warranty in respect of the property.

