



Websters
estate agents

Queens Road, Twickenham, TW1 4ES

First Floor 2 double bedroom apartment in a modern build development with a Share of Freehold, no onward chain, secure entry phone access, a private parking space and visitors parking. In a popular central Twickenham location less than 0.2 miles from town centre shops, cafes, restaurants and the mainline train station.

Tastefully presented to offer 637 sq ft of well balanced, newly decorated living space with modern fixtures and fittings and floorings, large double glazed windows and neutral decor throughout.

Entrance hallway leads to the 2 double bedrooms, the family bathroom, built in storage and the large living/dining room with access to the stylish fitted kitchen.

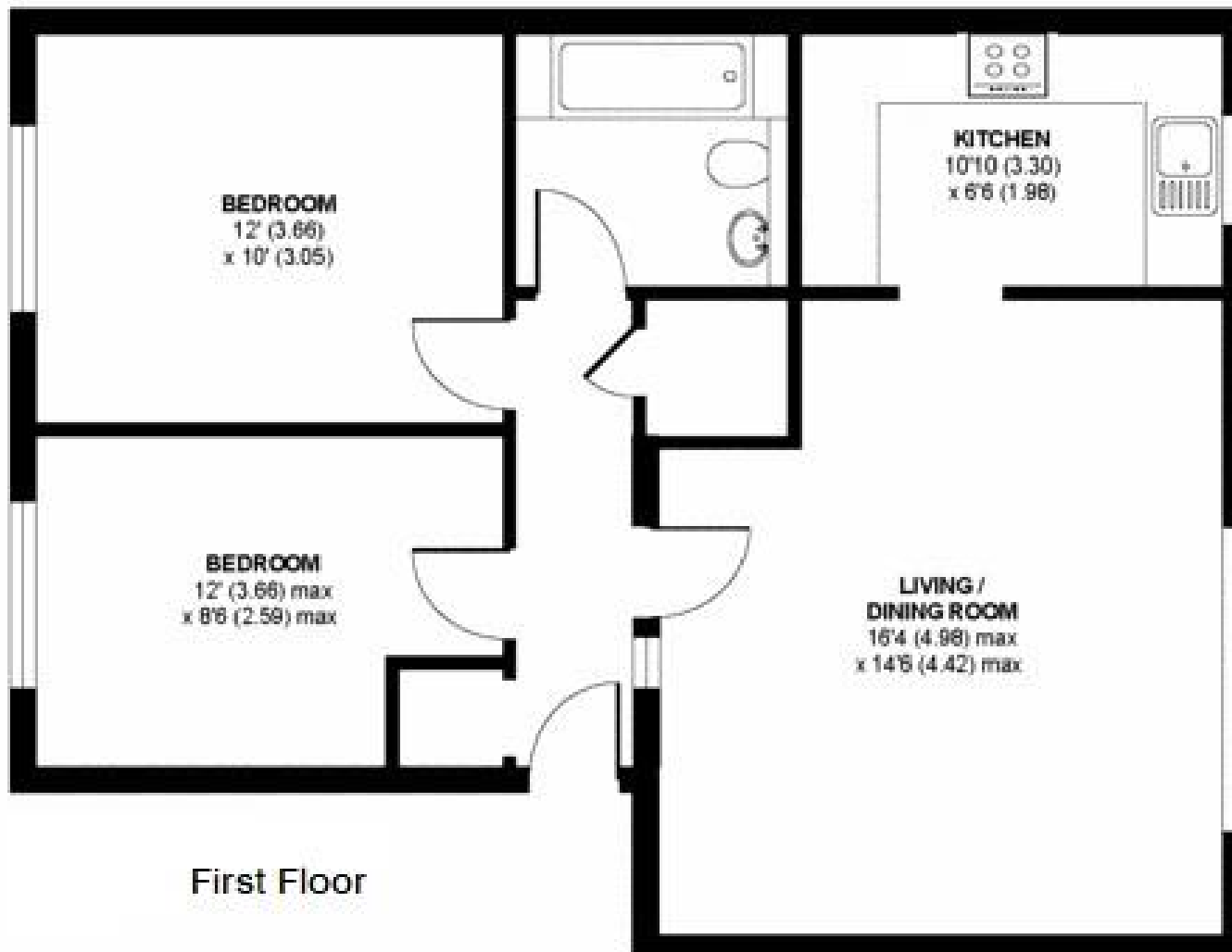
Situated only 0.5 miles from Church Street and Twickenham riverside with a towpath walk along the Thames past Marble Hill Park to Richmond upon Thames and 0.6 miles from the A316 with direct access to the M3/M25 and central London.

EPC Rating C

- First Floor 2 Bedroom Apartment
- 0.2 Miles from Twickenham Train Station
- Share of Freehold and No Chain
- Private Parking Space and Visitor Spaces
- Spacious 637 Sq Ft of Living Space
- Tastefully Presented Throughout
- Central Twickenham Location



**TOTAL GROSS
INTERNAL FLOOR AREA
637 SQFT 59.1 SQM**



First Floor

a Websters Estate Agents 36 Broad Street, Teddington, Middlesex TW11 8QY **t** 020 8614 6000 **e** sales@mywebsters.co.uk **w** mywebsters.co.uk

Disclaimer

These particulars, whilst believed to be accurate are set out as a general outline only for guidance and do not constitute any part of an offer or contract. Intending purchasers should not rely on them as statements of representation of fact, but must satisfy themselves by inspection or otherwise as to their accuracy. We have not carried out a detailed survey nor tested the services, appliances and specific fittings. Room sizes should not be relied upon for carpets and furnishings. The measurements given are approxiamte. No person in this firms employment has the authority to make or give any representation or warranty in respect of the property.

