



Websters
estate agents
For Sale

Websters
estate agents

Second Cross Road, Twickenham, TW2 5RA

Mid Terrace 2 double bedroom Victorian home with a landscaped 75ft west facing garden with lighting, power and a purpose built home office. Situated in a popular residential area just 0.2 miles from Twickenham Green, local shops, cafes and restaurants and 0.5 miles from Strawberry Hill Village and train station.

Immaculately presented to offer 818 sq ft of well balanced living space (including the home office) with high specification fixtures, fittings and floorings, some under floor heating, built in storage, double glazed sash style windows and pleasing neutral decor throughout.

Enclosed porch leads into the open plan living room with a feature fireplace, built in storage, space for a large dining table and access to the kitchen with stylish fitted units, underfloor heating, a large roof lantern. Doors at the rear lead to the spacious family bathroom and the low maintenance garden with a patio, artificial lawn, raised beds and the bespoke home office/studio room with power, wired internet and heating.

On the first floor are the 2 bedrooms both with vaulted ceilings and the rear with stairs to a mezzanine play/study area with velux windows and built in storage.

Located 0.2 miles from Trafalgar, TPA and Archdeacon Schools, 0.5 miles from Waldegrave Girls/Co-ed Sixth Form and less than 0.9 miles from Twickenham Town Centre, Church Street and riverside with a towpath walk/cycle track along the Thames past Marble Hill Park to Richmond.

EPC Rating D

- Mid Terrace 2 Double Bedroom Home
- High Specification Throughout
- 21ft Open Plan Living Room
- 818 Sq Ft Including the Home Office
- Mezzanine Play/Study Area in Rear Bedroom
- 0.2 Miles from Twickenham Green
- Within 0.5 Miles of Popular Schools

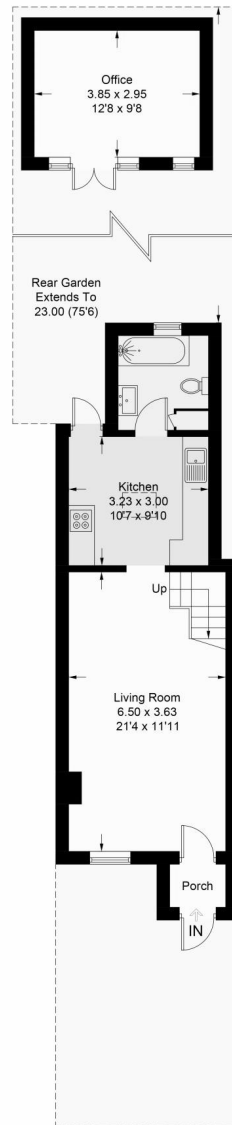


Second Cross Road, Twickenham

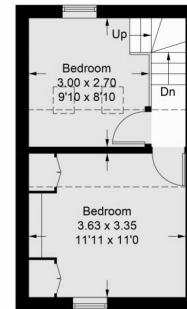
Approximate Gross Internal Area = 64.5 sq m / 694 sq ft

Office = 11.5 sq m / 124 sq ft

Total = 76 sq m / 818 sq ft



Ground Floor



First Floor

Illustration for identification purposes only, measurements are approximate, not to scale. floorplansUsketch.com © (ID1077399)

a Websters Estate Agents 36 Broad Street, Teddington, Middlesex TW11 8QY

t 020 8614 6000

e sales@mywebsters.co.uk **w** mywebsters.co.uk

Disclaimer

These particulars, whilst believed to be accurate are set out as a general outline only for guidance and do not constitute any part of an offer or contract. Intending purchasers should not rely on them as statements of representation of fact, but must satisfy themselves by inspection or otherwise as to their accuracy. We have not carried out a detailed survey nor tested the services, appliances and specific fittings. Room sizes should not be relied upon for carpets and furnishings. The measurements given are approximate. No person in this firm's employment has the authority to make or give any representation or warranty in respect of the property.

