



Websters
estate agents

Cassilis Road, St Margarets, TW1 1RU

Detached 3 bedroom home in need of complete modernisation with driveway parking, a garage and access on both sides of the house to the 84ft west facing rear garden. Situated in a popular residential area just 0.3 miles from St Margarets village shops, cafes and train station and within 0.7 miles of St Stephens, St Mary's and Orleans Schools.

With no onward chain and ideal for chain free, cash buyers due to the complete and extensive renovation works needed.

Currently offering 1202 sq ft of well proportioned living space over 2 floors with potential to extend, loft convert and reconfigure the layout to create a stunning bespoke home (subject to Planning Permission and Building Regulations)

Spacious entrance hallway leads to the open plan dual aspect living/dining room and the separate kitchen. Doors in both rooms open onto the garden with a patio, large lawn, mature planting and access to the garage, side and front of the house. On the first floor are 3 bedrooms, the bathroom, the separate w.c and hatch access to the loft storage

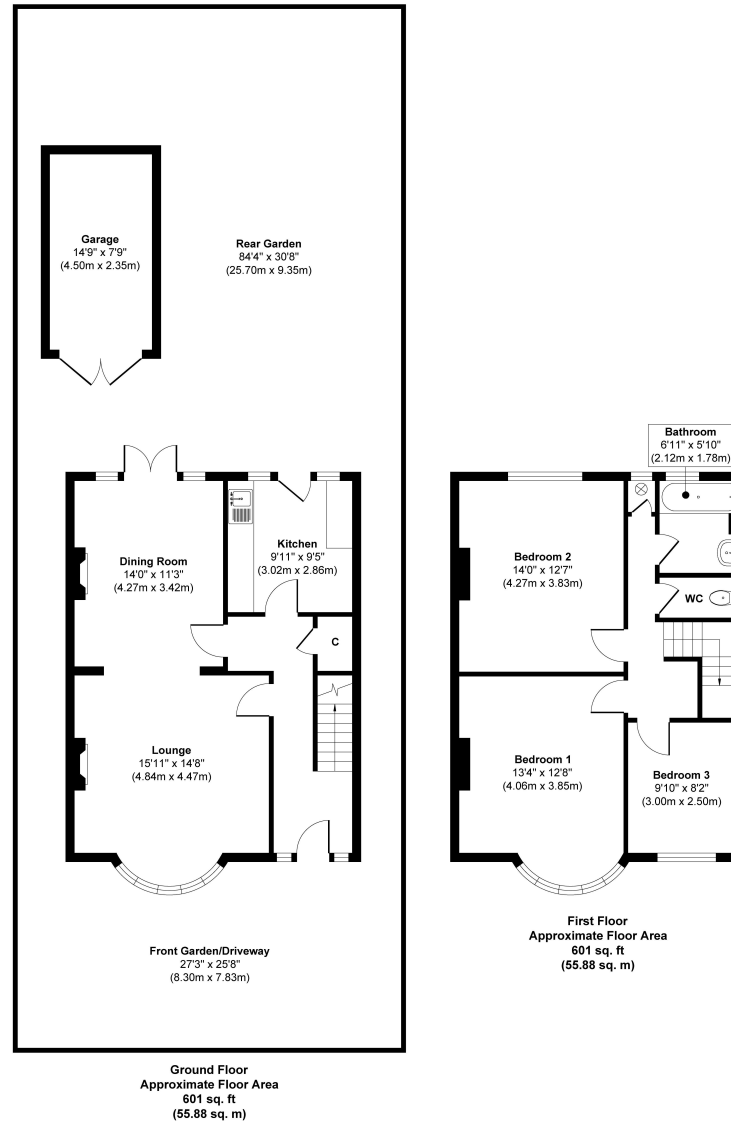
Located 0.5 miles from Thames riverside Old Deer Park. 0.8 miles from Richmond town centre and 0.9 miles from Twickenham town centre and station.

EPC Rating G

- Detached 3 Bedroom Home
- In Need of Complete Refurbishment
- Driveway, Garage and 84 Ft Garden
- Desirable St Margarets Location
- Potential to Create a Stunning Home
- 0.3 Miles from St Margarets Village and Station
- Within 0.7 Miles of Popular Schools



Cassilis Road, TW1



Approx. Gross Internal Floor Area 1,202 sq. ft / 111.76 sq. m. (Excluding Garage)

a Websters Estate Agents 36 Broad Street, Teddington, Middlesex TW11 8QY t 020 8614 6000 e sales@mywebsters.co.uk w mywebsters.co.uk

Disclaimer

These particulars, whilst believed to be accurate are set out as a general outline only for guidance and do not constitute any part of an offer or contract. Intending purchasers should not rely on them as statements of representation of fact, but must satisfy themselves by inspection or otherwise as to their accuracy. We have not carried out a detailed survey nor tested the services, appliances and specific fittings. Room sizes should not be relied upon for carpets and furnishings. The measurements given are approximate. No person in this firm's employment has the authority to make or give any representation or warranty in respect of the property.

