



20

21

Websters
estate agents

Marsh Farm Road, Twickenham

Attractive mid terrace cottage in a highly regarded residential location just 0.3 miles from Twickenham Green, local shops and restaurants.

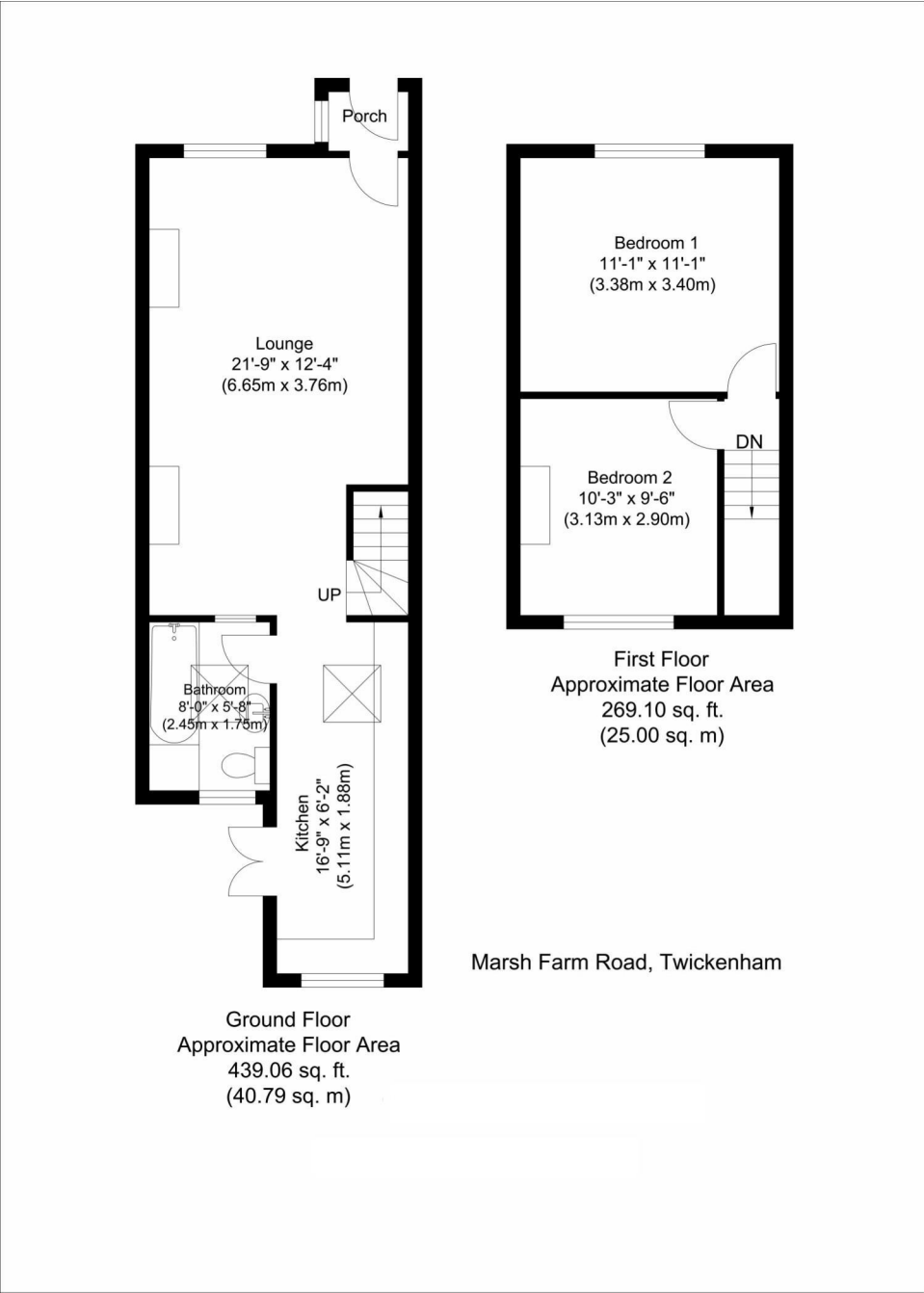
Available with no onward chain, this charming home is well presented throughout with pleasant light neutral decor and offers 708sq ft of well planned living space with quality fittings and period features.

Front porch opens into the through lounge/dining room with wood flooring and fireplaces and into the utility area, fitted kitchen and downstairs family bathroom. Double doors in the kitchen open onto the pretty west facing garden. Upstairs are 2 double bedrooms.

Situated 0.5 miles from Twickenham mainline station/town centre and just 0.7 miles from Strawberry Hill Station. EPC Rating D

- Mid Terrace Cottage
- Twickenham Green Location
- 2 Double Bedrooms
- Open Plan Lounge/Dining Room
- Modern Kitchen and Utility Area
- Fitted Family Bathroom
- West Facing Garden
- 0.5 Miles from Twickenham Station
- No Onward Chain





a Websters Estate Agents 164 Heath Road, Twickenham, Middlesex TW1 4BN

t 020 8892 3343

e info@mywebsters.co.uk

w mywebsters.co.uk

Disclaimer
 These particulars, whilst believed to be accurate are set out as a general outline only for guidance and do not constitute any part of an offer or contract. Intending purchasers should not rely on them as statements of representation of fact, but must satisfy themselves by inspection or otherwise as to their accuracy. We have not carried out a detailed survey nor tested the services, appliances and specific fittings. Room sizes should not be relied upon for carpets and furnishings. The measurements given are approximate. No person in this firm's employment has the authority to make or give any representation or warranty in respect of the property.

