



P Permit holders only
Mon - Sat
8.30 am - 6.30 pm

08

Websters
estate agents

May Road, Twickenham, TW2 6RJ

Mid Terrace 3 double bedroom Victorian family home in a popular residential location just 0.1 mile from Twickenham Green, local shops bars and restaurants, 0.3 miles from Archdeacon Primary, 0.5 miles from Trafalgar Primary and St Richard Reynolds and 0.8 miles from Waldegrave Girls School/Co-ed Sixth Form.

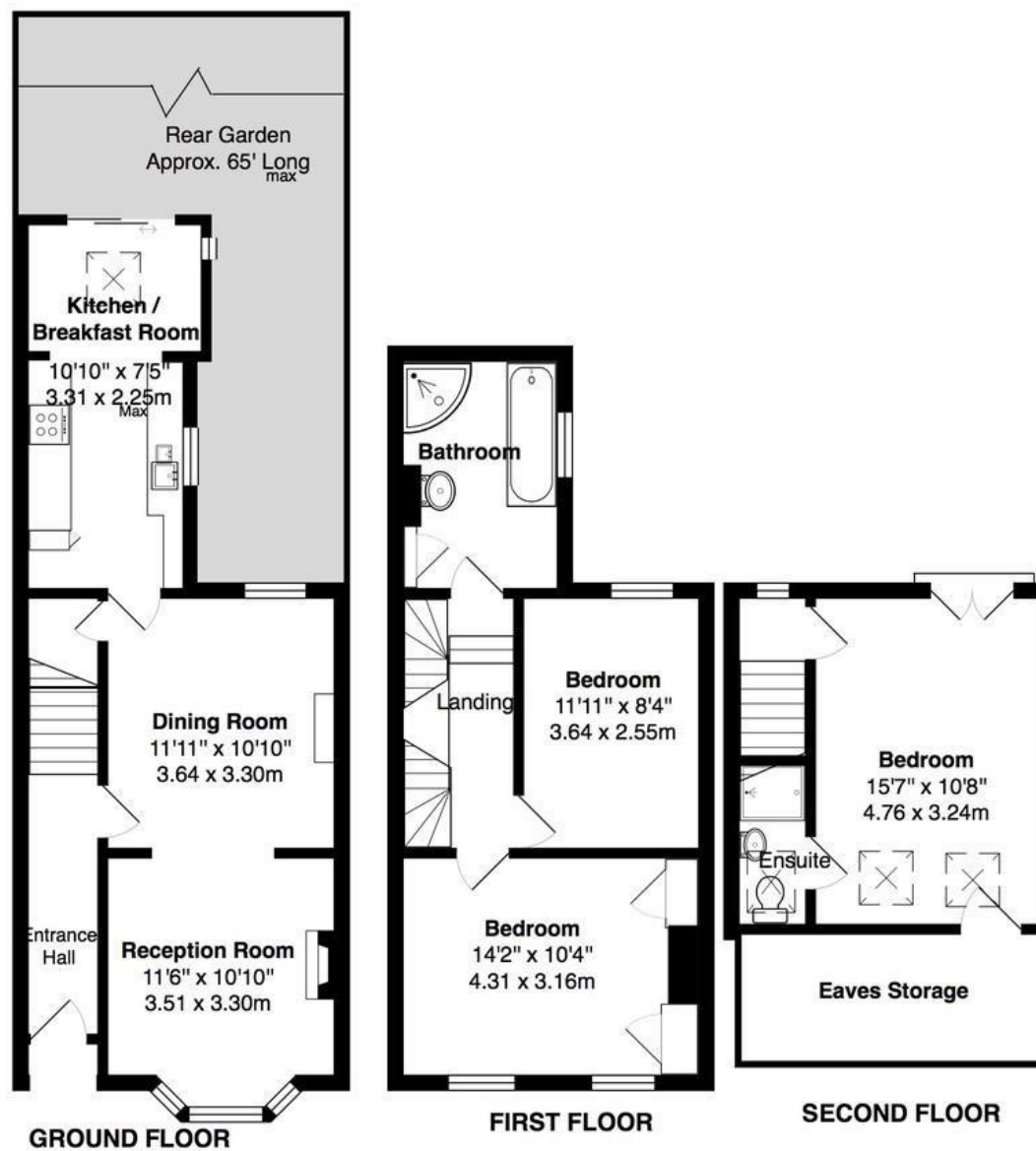
Extended, loft converted and refurbished by the current owners to an impressive standard to offer 1076 sq ft of living space over 3 floors with modern fixtures, fittings and floorings, double glazed windows, neutral decor throughout and potential to create an additional loft room and further extend/reconfigure the layout on the ground floor (subject to Planning Permission and Building Regulations).

Entrance hallway leads to the dual aspect, open plan living/family room with access to the separate fitted kitchen/breakfast room at the rear. Doors open onto the 65 ft garden with a deck, lawn, patio and shed storage. On the first floor are 2 double bedrooms and the family bathroom with stairs up to the master bedroom with an en-suite shower room, juliet balcony and eaves storage.

Located 0.6 miles from Strawberry Hill train station and Twickenham town centre and 0.9 miles from Twickenham mainline train station.
EPC Rating D

- Mid Terrace Victorian Family Home
- 3 Double Bedrooms and 2 Bathrooms
- Potential to Further Extend (stpp)
- Open Plan Living/Family Room
- Seperate Kitchen/Breakfast Room
- 65 Ft Rear Garden
- 0.1 Miles from Twickenham Green
- Close to Numerous Popular Schools





TOTAL FLOOR AREA approx.= 1,076 Sq.Feet

a Websters Estate Agents 164 Heath Road, Twickenham, Middlesex TW1 4BN

t 020 8892 3343

e sales@mywebsters.co.uk w mywebsters.co.uk

Disclaimer

These particulars, whilst believed to be accurate are set out as a general outline only for guidance and do not constitute any part of an offer or contract. Intending purchasers should not rely on them as statements of representation of fact, but must satisfy themselves by inspection or otherwise as to their accuracy. We have not carried out a detailed survey nor tested the services, appliances and specific fittings. Room sizes should not be relied upon for carpets and furnishings. The measurements given are approximate. No person in this firm's employment has the authority to make or give any representation or warranty in respect of the property.

