



95, 97, 99 & 101

95 97
99 101

Websters
estate agents

Andover Road, Twickenham, TW2 6PA

First Floor 2 double bedroom apartment with a large private rear garden and brick built storage/bike shed. Situated just 0.3 miles from Twickenham Green, local shops, cafes and restaurants, 0.1 mile from Trafalgar Nursery, less than 0.6 miles from Trafalgar Primary, Archdeacon Primary and Waldegrave Girls School/Co-ed Sixth Form.

With no onward chain and offering 524 sq ft of well balanced living space with modern fixtures and fittings and large double glazed windows.

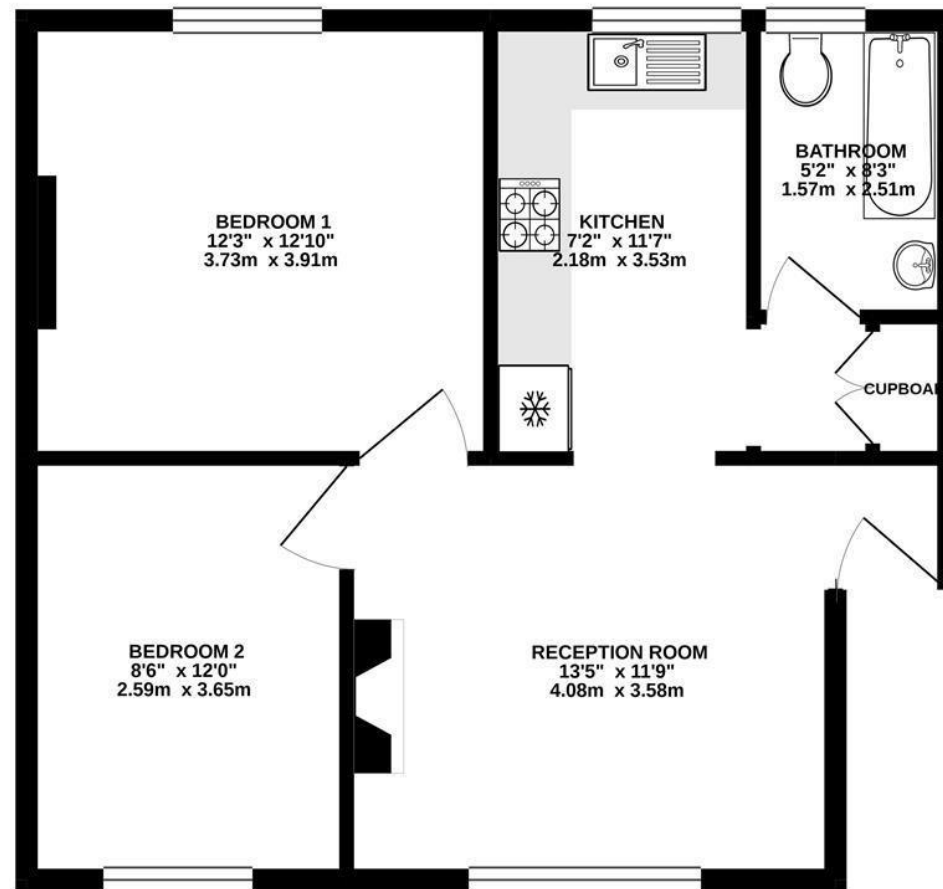
Entrance lobby leads into the living/dining room with a feature fireplace, built in storage and access to the fitted kitchen/breakfast room, storage, the family bathroom and the 2 double bedrooms.

Located 0.5 miles from Whitton town centre and mainline train station, 0.7 miles from Strawberry Hill village and station and only 0.3 miles from the A316 with direct access to the M3/M25 and into central London.

EPC Rating D

- First Floor 2 Double Bedroom Apartment
- Large Private Garden
- No Onward Chain
- Living Room and Kitchen/Breakfast Room
- Spacious 524 Sq Ft of Living Space
- Popular Residential Location
- 0.3 Miles from Twickenham Green





1ST FLOOR
524 sq.ft. (48.7 sq.m.) approx.

[a](#) Websters Estate Agents 36 Broad Street, Teddington, Middlesex TW11 8QY [t](#) 020 8614 6000 [e](#) sales@mywebsters.co.uk [w mywebsters.co.uk](http://mywebsters.co.uk)

Disclaimer

These particulars, whilst believed to be accurate are set out as a general outline only for guidance and do not constitute any part of an offer or contract. Intending purchasers should not rely on them as statements of representation of fact, but must satisfy themselves by inspection or otherwise as to their accuracy. We have not carried out a detailed survey nor tested the services, appliances and specific fittings. Room sizes should not be relied upon for carpets and furnishings. The measurements given are approximate. No person in this firm's employment has the authority to make or give any representation or warranty in respect of the property.

