



MEADVALE ROAD
W5

£1,240,000

Pitshanger



MEADVALE ROAD, W5

£1,240,000



Reception Room



24ft Kitchen/
Family room



Four Bedrooms



Two Bathrooms



On Street

Backing on to Pitshanger Park, a wonderful four bedroom period home, skilfully extended with loft and rear extensions. This immaculate 1667sq.ft family home boasts immense period charm and offers lovely views over the open spaces of Pitshanger Park. The ground floor has an excellent sense of flowing space and showcases a stunning 23ft x 17ft Diorio Italian kitchen/family room with large atrium roof. Solid oak bi folding doors open out to the garden providing indoor/outdoor living during the warmer months. A 16ft south facing reception room and cloakroom concludes the ground floor accommodation. On the first floor there are two large double bedrooms both with built in wardrobes, a single bedroom and family bathroom. The rear double bedroom has a balcony overlooking the park. The second floor (loft conversion) accommodates a 22ft master bedroom with high ceilings and floor to ceiling windows offering fantastic park views. There are approximately 7m of fitted wardrobes and there's a spacious en suite shower room. Outside there's a lovely, 52ft rear garden, with timber decked and patio areas. Located at the back of the garden is an impressive self-contained studio outbuilding with shower room, kitchenette & central heating.

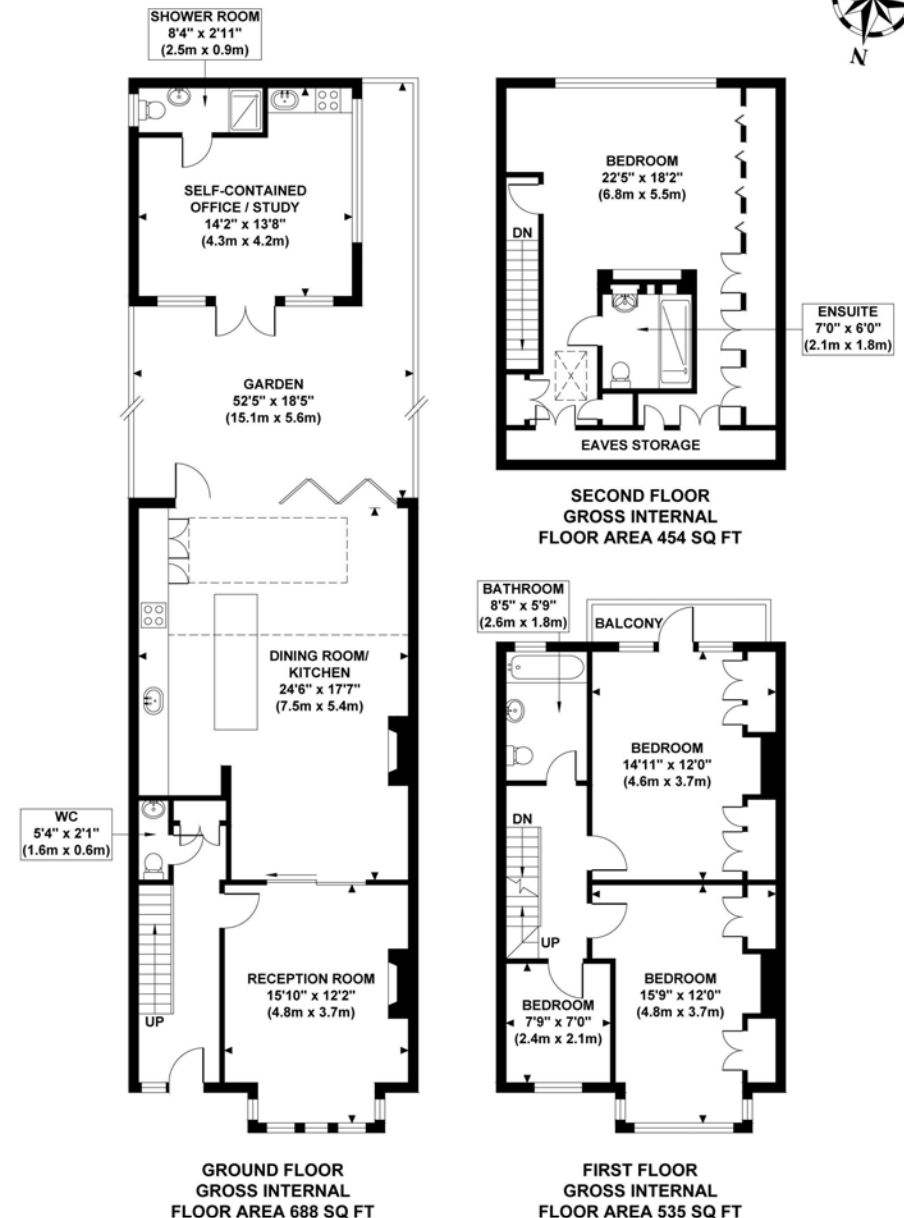
Meadvale Road is a pretty tree lined street, moments from Pitshanger Park and Pitshanger Lane's Award Winning High Street, with its excellent local amenities including a variety of local shops, restaurants, good primary schools, and local bus services to Ealing Broadway.

EPC RATING: D
LOCAL AUTHORITY: Ealing
COUNCIL TAX BAND: F

You may wish to instruct us about a related service, including: the sale and letting of residential and commercial property, the provision of mortgage and financial services, conveyancing and property management. Where you choose to use other services, Northfields or its employees may receive a fee or commission which will be disclosed to you.

MEADVALE ROAD

Approximate Gross Internal Area
1677 sq ft / 156.0 sq m



Although every attempt has been made to ensure accuracy, all measurements are approximate and no responsibility is taken for any error, omission, or mid-statement. This floor plan is for illustrative purposes only and not to scale. Measured in accordance to RICS standards.
GB PRO PHOTOS

Your local independent
award winning estate agents



Pitshanger

1 Albert Terrace
Ealing
London W5 1RL
Sales: 020 8998 3111
E: pitssales@northfields.co.uk

020 8998 3111

www.northfields.co.uk

CONTACT

Us today

TO FIND OUT

MORE