



5 PINEL CLOSE  
VIRGINIA WATER

**BUCKINGHAMS**





# 5 Pinel Close

Virginia Water • Surrey • GU25 4SP

£1,100,000 Freehold

A newly renovated and extended end townhouse providing superb family space, on the highly sought after Virginia Park gated development.



- THREE/FOUR BEDROOM END TOWNHOUSE
- IMPRESSIVE OPEN PLAN KITCHEN/FAMILY ROOM
- HIGH QUALITY FINISH THROUGHOUT
- COMMUNAL GYM, TENNIS COURT, INDOOR POOL
- INTEGRAL DOUBLE GARAGE
- 24 HOUR MANNED SECURITY
- PRIVATE COURTYARD GARDEN
- CLOSE TO THE VILLAGE CENTRE

RECEPTION HALL • CLOAKROOM • DRAWING ROOM, OPEN PLAN KITCHEN/DINING/FAMILY ROOM • MASTER BEDROOM SUITE • TWO FURTHER BEDROOMS • FAMILY BATHROOM • DOUBLE BEDROOM FOUR/STUDY & ADJACENT SHOWER ROOM • DRIVEWAY TO DETACHED DOUBLE GARAGE • COURTYARD GARDEN



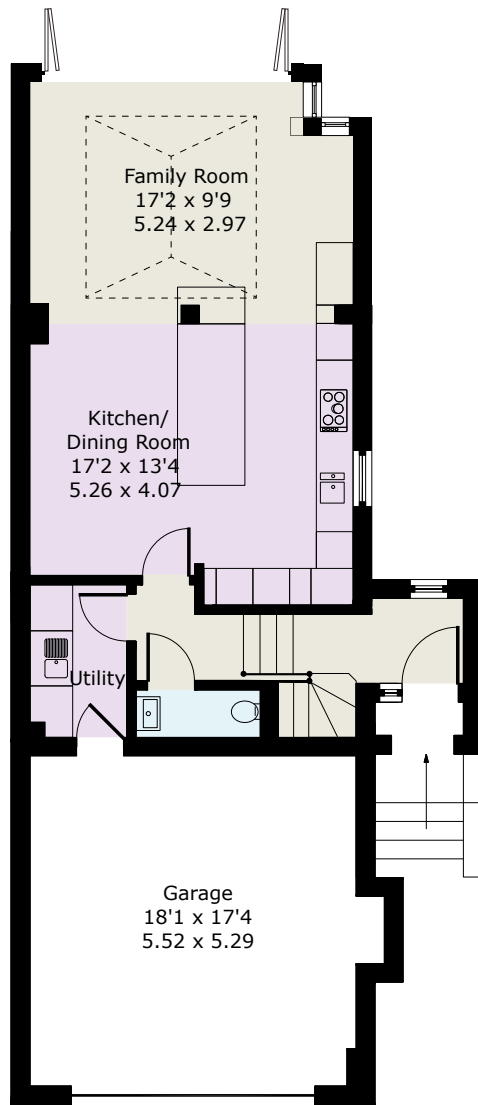
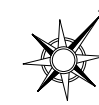
## Description

5 Pinel Close has been upgraded internally to a superb specification and the ground floor has been extended to provide a wonderful open plan kitchen/dining/family room opening onto the courtyard garden; the quality throughout is truly superb and this lovely home truly presents a great opportunity to the discerning buyer.

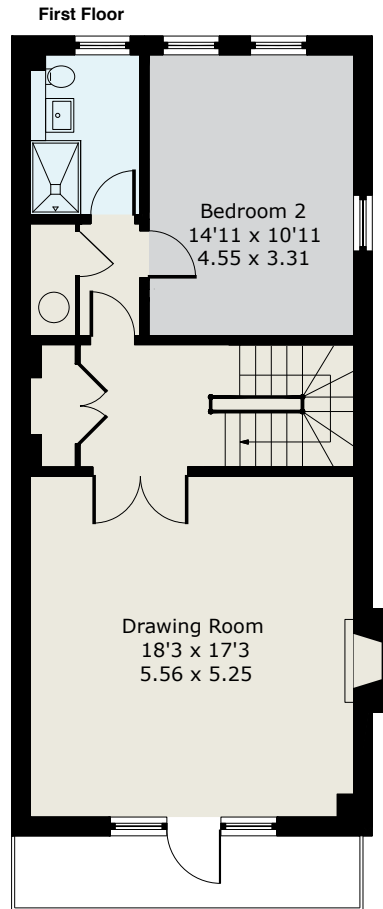
## Directions

From our offices on Station Approach, Virginia Water, turn right onto Christchurch Road and after crossing the rail bridge turn left into the walled & gated entrance into Virginia Park; the guards will direct you from there.

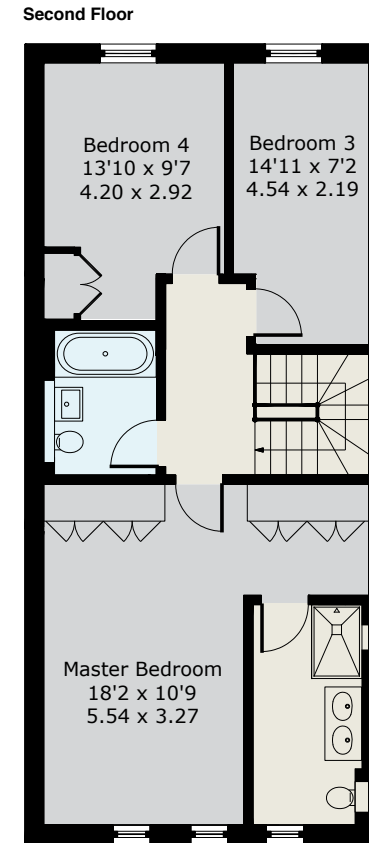
Approximate Gross Internal Floor Area :  
Total 219.29 sq m / 2361 ft<sup>2</sup>



Ground Floor



First Floor



Second Floor

EPC: D63.

Important Notice

These particulars and measurements are believed to be correct but their accuracy is not guaranteed by the Vendor or Vendor's Agents and they do not constitute any part of a contract. It is not our Company Policy to test services and domestic appliances so we cannot verify that they are in working order. The buyer is advised to obtain verification from their Solicitor or Surveyor.

Ref: 5PCB012609213 HPI ©2021 Not to Scale. Any Areas, measurements or distances given are maximum and approximate only, no decisions without checking should be made when reliant upon them.

01344 845050

**BUCKINGHAMS**

6 STATION APPROACH, VIRGINIA WATER, SURREY GU25 4DL • sales@buckingham.com • www.buckingham.com





**BUCKINGHAMS**