





# Marsh Farm Road, Twickenham, TW2 6SH

Mid Terrace 3 bedroom Victorian family home with a west facing garden in a popular residential location just 0.3 miles from Twickenham Green, local shops, cafes and restaurants.

Extended at the rear and loft converted to offer 985 sq ft of tastefully presented living space over 3 floors with modern fixtures, fittings and floorings, sash style double glazed windows, newly replaced flat roof and pleasing neutral decor throughout.

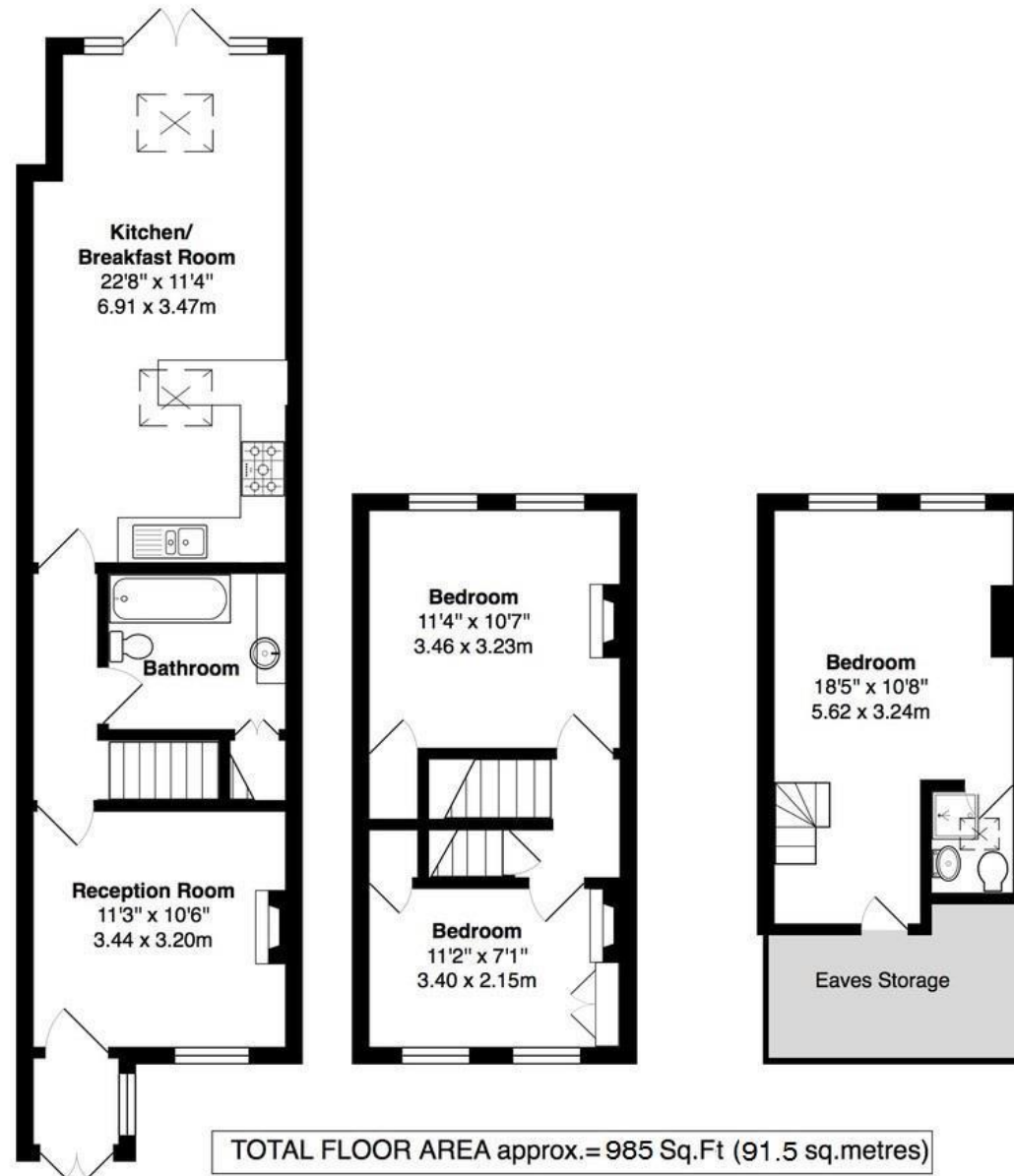
Front porch opens into the living room with plantation shutters, a feature fireplace and access to the internal hallway with a door to the family bathroom, utility room and the kitchen/family room at the rear. This light filled room has space for seating and dining, a stylish integrated kitchen and velux roof windows. Large double doors open onto the low maintenance west facing garden with planting, tall fences and shed storage. On the first floor are 2 bedrooms with substantial built in storage and stairs leading up to the master bedroom suite with an en-suite shower room, study area and extensive eaves storage.

Located 0.5 miles from Twickenham town centre and mainline train station and less than 0.7 miles from Archdeacon and Trafalgar Primary Schools, St Richard Reynolds School and Strawberry Hill Station.

EPC Rating D

- Mid Terrace Victorian Family Home
- 3 Bedrooms and 2 Bathrooms
- West Facing Garden
- Living Room and Kitchen/Family Room
- Extended and Loft Converted
- Well Balanced Living Space over 3 Floors
- 0.3 Miles from Twickenham Green





**a** Websters Estate Agents 36 Broad Street, Teddington, Middlesex TW11 8QY

**t** 020 8614 6000

**e** sales@mywebsters.co.uk **w** mywebsters.co.uk

**Disclaimer**

These particulars, whilst believed to be accurate are set out as a general outline only for guidance and do not constitute any part of an offer or contract. Intending purchasers should not rely on them as statements of representation of fact, but must satisfy themselves by inspection or otherwise as to their accuracy. We have not carried out a detailed survey nor tested the services, appliances and specific fittings. Room sizes should not be relied upon for carpets and furnishings. The measurements given are approximate. No person in this firm's employment has the authority to make or give any representation or warranty in respect of the property.



