



Northfields

VALETTA ROAD
W3

£775,000

Acton



VALETTA ROAD, W3

£775,000



Three Reception Rooms



Kitchen



Three Bedrooms



One Bathroom



On Street

This is a terraced, natural three-bedroom house on the much sought-after Valetta Road requiring modernisation with the potential to extend (STPP).

Currently offering three reception rooms and a separate kitchen on the ground floor and three spacious bedrooms and a family bathroom on the first floor. There is much to offer a family seeking a project to make a very comfortable home in the catchment of many outstanding schools or someone with a keen eye for a shrewd investment.

Valetta Road is a short walk from the shops and cafés of the Uxbridge and Askew Roads. There are many bus links along the Uxbridge Road meaning that the wider choice of shops, restaurants, and leisure destinations of Westfield Shopping Centre are within easy reach.

Central London and further afield is served by the district line from nearby Stamford Brook and Turnham Green underground stations. Wendell Park is within walking distance and neighbouring Chiswick offers additional options for shopping, restaurants, and bars.

EPC RATING: D

LOCAL AUTHORITY: London Borough of Ealing

COUNCIL TAX BAND: F

TENURE: Freehold

You may wish to instruct us about a related service, including: the sale and letting of residential and commercial property, the provision of mortgage and financial services and/or conveyancing. Where you choose to use other services, Northfields or its employees may receive a fee or commission which will be disclosed to you.

Under The Consumer Protection from Unfair Trading Regulations 2008, these particulars are a guide and act as information only. All details are given in good faith and are believed to be correct at the time of printing. Northfields give no representation as to their accuracy and potential purchasers or tenants must satisfy themselves by inspection or otherwise as to their correctness. No employee of Northfields has authority to make or give any representation or warranty in relation to this property.



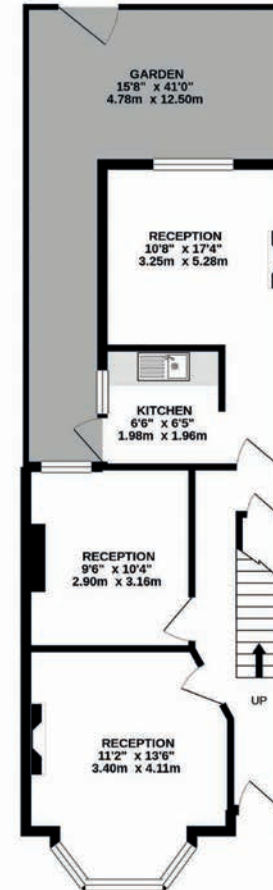
VALETTA ROAD

Approximate Gross Internal Area

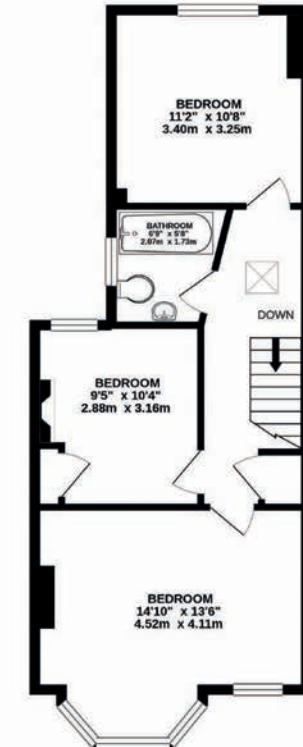
1029 sq ft / 95.6 sq m



Northfields



GROUND FLOOR
GROSS INTERNAL
FLOOR AREA 498 SQ FT approx



FIRST FLOOR
GROSS INTERNAL
FLOOR AREA 531 SQ FT approx

Whilst every attempt has been made to ensure the accuracy of the floorplan contained here, measurements of doors, windows, rooms and any other items are approximate and no responsibility is taken for any error, omission or mis-statement. This plan is for illustrative purposes only and should be used as such by any prospective purchaser. The services, systems and appliances shown have not been tested and no guarantee as to their operability or efficiency can be given.
Made with Metropix ©2021.

Your local independent award winning estate agents



Shepherds Bush

127 Askew Road,
Shepherds Bush W12 9AU
Sales: 020 8740 8833
E: sbsales@northfields.co.uk

020 8740 8833

www.northfields.co.uk

CONTACT

Us today

TO FIND OUT

MORE