



**NORTHCROFT ROAD
W13**

£750,000

Northfields



NORTHCROFT ROAD, W13

£750,000



Reception Room



Kitchen



Three Bedrooms



Two Bathrooms

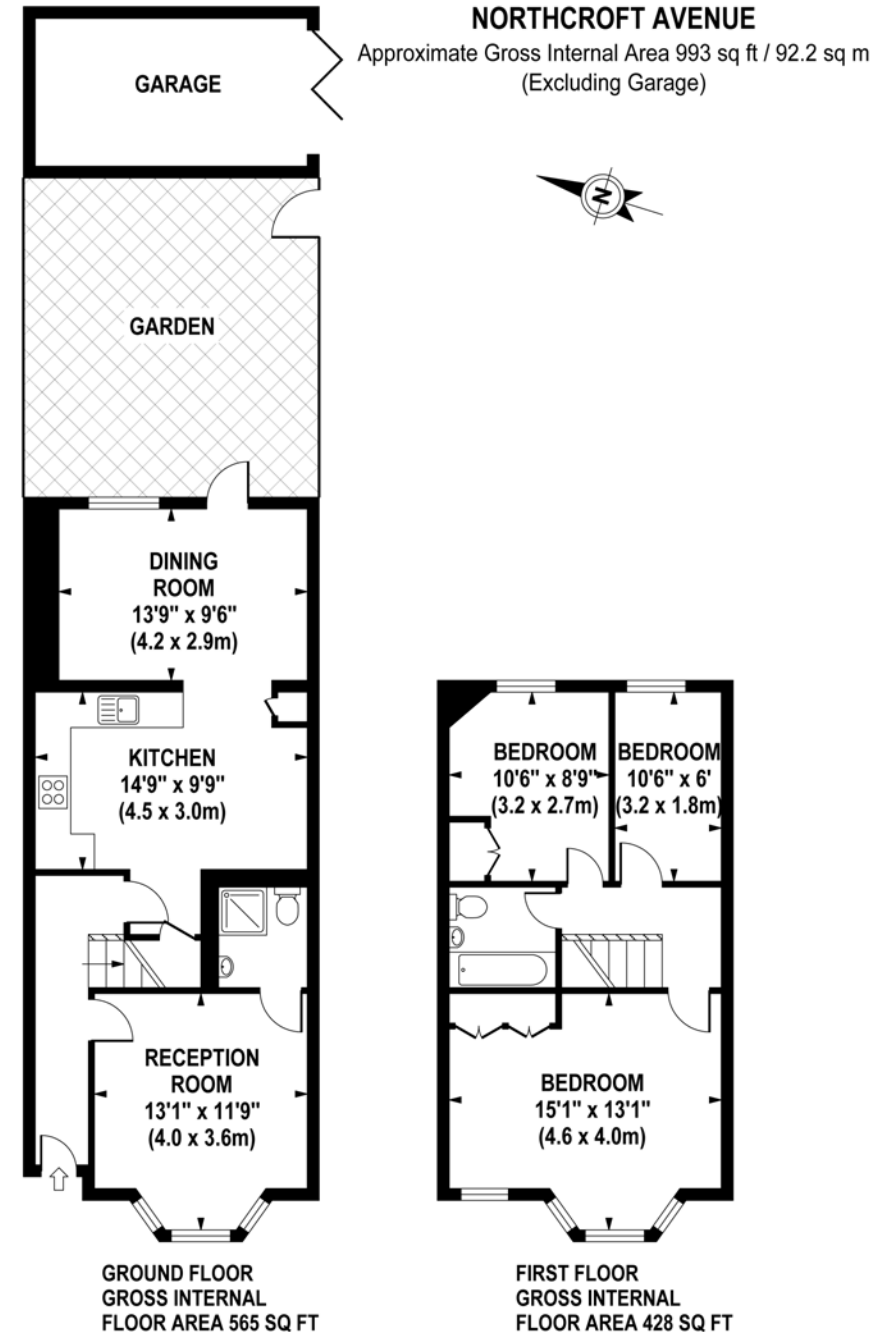


Garage

Tucked into a quiet neighbourhood off Northfield Avenue, this three bedroom end of terrace house boasts neatly appointed interiors and situated in a prime location. The property benefits from three bedrooms, a separate reception room, open plan kitchen and dining area, two bathrooms and private garden. The boutiques and cafés along Northfield Avenue are a short walk away and down the road Northfields Piccadilly line underground station is available for connections into central London and Heathrow.

For those who prefer to travel by car, the A4/M4 is easily accessed from this community oriented area. Two of Ealing's premier parks, Lammas and Walpole Parks are close by which both have plenty of play areas and lovely green open spaces for the whole family to enjoy before returning home to the oasis offered by this home.

EPC RATING: D
LOCAL AUTHORITY: Ealing
COUNCIL TAX BAND: E



Although every attempt has been made to ensure accuracy, all measurements are approximate. The floor plan's for illustrative purposes only and not to scale. Measured in accordance to RICS standards.

Your local independent
award winning estate agents



Northfields

130-132 Northfield Avenue,
Ealing W13 9RT
Sales: 020 8840 6666
E: nasales@northfields.co.uk

020 8840 6666

www.northfields.co.uk

CONTACT

Us today

TO FIND OUT

MORE