



Northfields

MULGRAVE ROAD
W5

£500,000

Offers In Excess Of

Ealing



MULGRAVE ROAD, W5

£500,000 O.I.E.O



20 ft Reception Room



Open plan kitchen



Two Bedrooms



Two Bathrooms



On Street

A wonderful two double bedroom/two bathroom duplex conversion flat. This spacious property measures approximately 988 sq.ft and is set over the first and second floors of an attractive 1930's end of terrace house. The first floor accommodates two double bedrooms with fitted wardrobes and two bathrooms, the master bedroom has a stylish ensuite shower room with an exposed brick feature wall. Upstairs on the second (top) floor there's an impressive 20ft x 19ft living room with open plan kitchen, a great room for entertaining. Other notable features include a private front garden and newly extended lease of 173 years unexpired.

Mulgrave Road is a quiet residential street, in the sought after Greystoke Park Estate, well placed for Hanger Lane underground and Pitshanger Lanes Award Winning High Street. The property also falls in the catchment area for the outstanding Montpelier primary school.

EPC RATING: D
 LOCAL AUTHORITY: Ealing
 COUNCIL TAX BAND: C

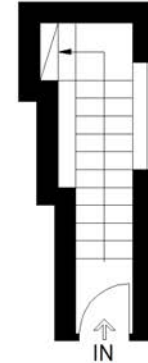


Mulgrave Road Ealing

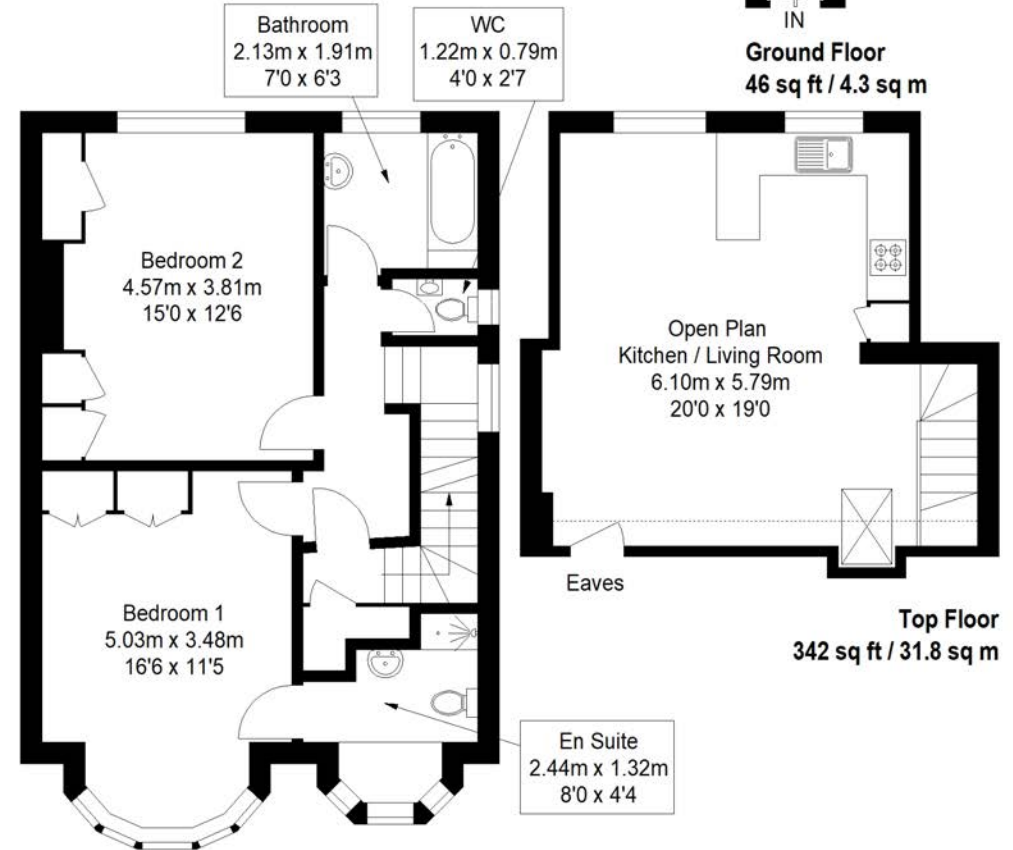
Approximate Gross Internal Area
 988 sq ft / 91.8 sq m



Reduced headroom
 below 1.5 m / 5'0"



Ground Floor
 46 sq ft / 4.3 sq m



First Floor
 600 sq ft / 55.7 sq m

Top Floor
 342 sq ft / 31.8 sq m

Your local independent
award winning estate agents



Pitshanger

1 Albert Terrace
Ealing
London W5 1RL
Sales: 020 8998 3111
E: pitssales@northfields.co.uk

020 8998 3111

www.northfields.co.uk

