



Websters
estate agents

Churchview Road, Twickenham, TW2 5BX

End of Terrace 3 bedroom home in a quiet cul-de-sac location with a south west facing garden and a private garage. Situated 0.4 miles from Twickenham Green, local shops, bars and restaurants and just 0.1 mile from bus stops to Heathrow, Kingston and Richmond upon Thames.

With no onward chain, in need of some updating and offering 861 sq ft of well balanced living space over 2 floors.

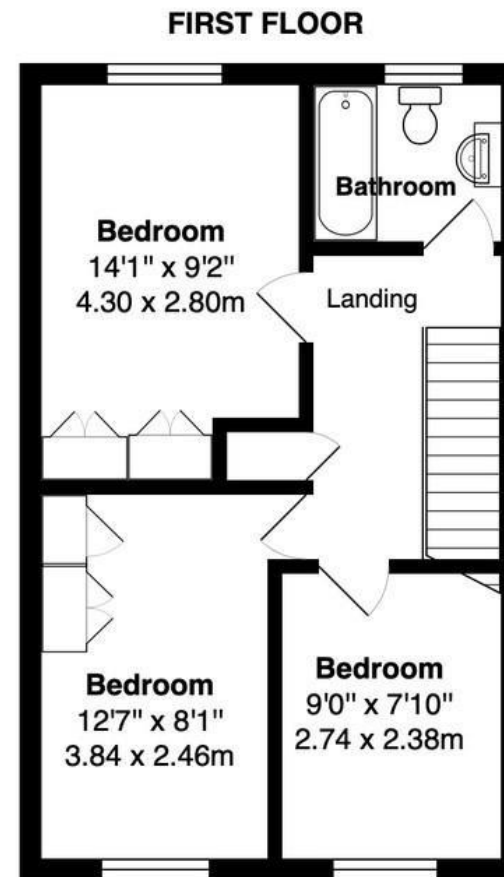
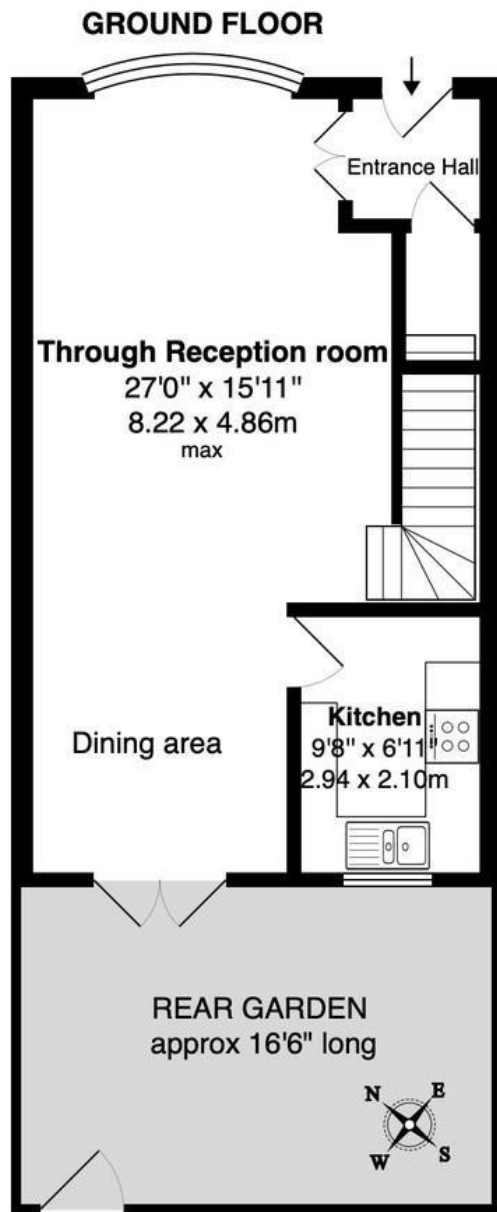
Entrance hallway leads to the open plan dual aspect living/dining room with a door into the fitted kitchen. Double doors open onto the garden with a patio, lawn, mature planting and gated rear access. On the first floor are 3 bedrooms and the family bathroom

Located 0.2 miles from Trafalgar Primary, 0.4 miles from Archdeacon Primary and Waldegrave Girls/Co-ed Sixth Form and 0.8 miles from Twickenham town centre and Strawberry Hill Train Station.

EPC Rating D

- End of Terrace 3 Bedroom Home
- South Westerly Garden and Private Garage
- No Onward Chain
- Popular Residential Location
- In Need of Modernisation
- 0.4 Miles from Twickenham Green
- Close to Numerous Popular Schools





TOTAL FLOOR AREA
approx.= 861 Sq.Feet (80 sq metres)

a Websters Estate Agents 164 Heath Road, Twickenham, Middlesex TW1 4BN t 020 8892 3343 e sales@mywebsters.co.uk w mywebsters.co.uk

Disclaimer

These particulars, whilst believed to be accurate are set out as a general outline only for guidance and do not constitute any part of an offer or contract. Intending purchasers should not rely on them as statements of representation of fact, but must satisfy themselves by inspection or otherwise as to their accuracy. We have not carried out a detailed survey nor tested the services, appliances and specific fittings. Room sizes should not be relied upon for carpets and furnishings. The measurements given are approximate. No person in this firm's employment has the authority to make or give any representation or warranty in respect of the property.

