



Northfields

VALETTA ROAD
W3

£575,000

Acton



VALETTA ROAD, W3

£575,000



Large Reception Room



Separate Kitchen



Two Bedrooms



Bathroom



On Street Parking

A superb redesign and flawless renovation has transformed this residence into a contemporary haven built for effortless living. Elegant interiors, smart modern finishes and a great location give this well-presented Edwardian maisonette enormous appeal to families and couples.

The property is superbly positioned within the catchment area of two Ofsted Outstanding rated primary schools and within short walking distance of Acton Central station. Moments from The Vale where you have access to an array of shops and the green open spaces of Acton Park and the highly desirable Turnham Green.

EPC RATING: TBC

LOCAL AUTHORITY: London Borough of Ealing

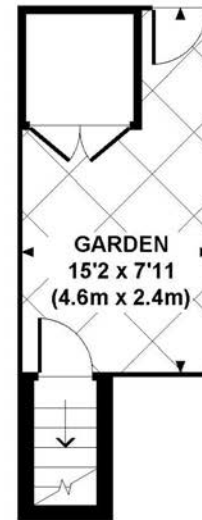
COUNCIL TAX BAND: D

LENGTH OF LEASE: 125 years from 25 March 2008

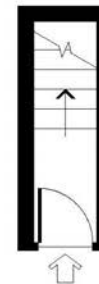
You may wish to instruct us about a related service, including: the sale and letting of residential and commercial property, the provision of mortgage and financial services, conveyancing and property management. Where you choose to use other services, Northfields or its employees may receive a fee or commission which will be disclosed to you.

VALETTA ROAD

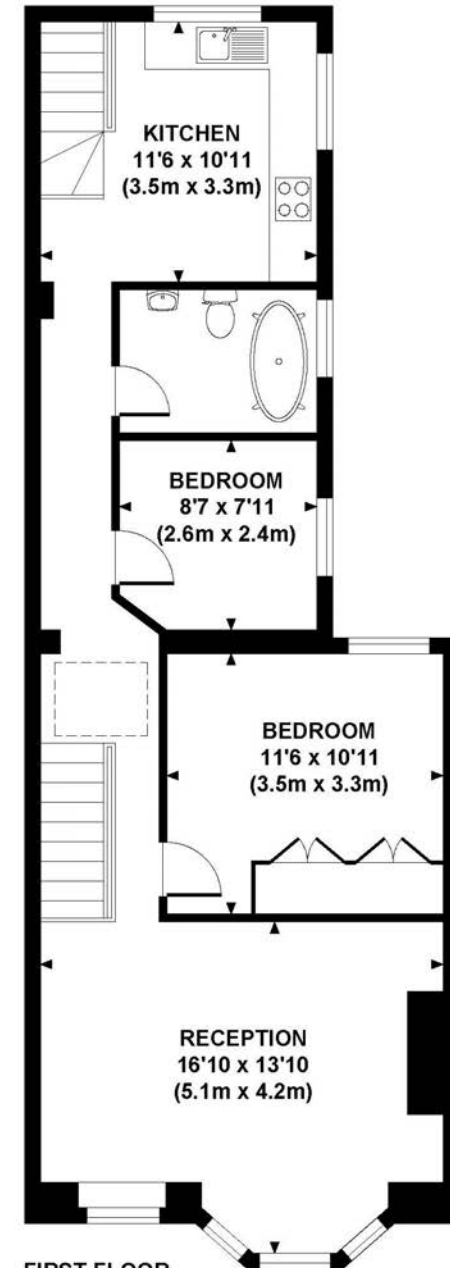
Approximate Gross Internal Area 726 sq ft / 67.4 sq m



GROUND FLOOR
GROSS INTERNAL
FLOOR AREA 14 SQ FT



GROUND FLOOR
GROSS INTERNAL
FLOOR AREA 24 SQ FT



FIRST FLOOR
GROSS INTERNAL
FLOOR AREA 688 SQ FT

© Northfields Estate Agents

Although every attempt has been made to ensure accuracy, all measurements are approximate. The floor plan's for illustrative purposes only and not to scale. Measured in accordance to RICS standards. DE-PHOTOGRAPHY.NET

Your local independent
award winning estate agents



Shepherds Bush

127 Askew Road,
Shepherds Bush W12 9AU
Sales: 020 8740 8833
E: sbsales@northfields.co.uk

020 8740 8833

www.northfields.co.uk

CONTACT

Us today

TO FIND OUT

MORE