



Northfields

**BARNFIELD ROAD
W5**

£899,950

Pitshanger



BARNFIELD ROAD, W5

£899,950



Two Reception Rooms



Kitchen



Four Bedrooms



Bathroom



On-Street Parking

A characterful four bedroom Edwardian house retaining an abundance of period features. The property offers accommodation over 3 floors and there's a lovely sunny west facing rear garden. Our clients have enjoyed living in the house for nearly 40 years and the property has only had 2 owners since built.

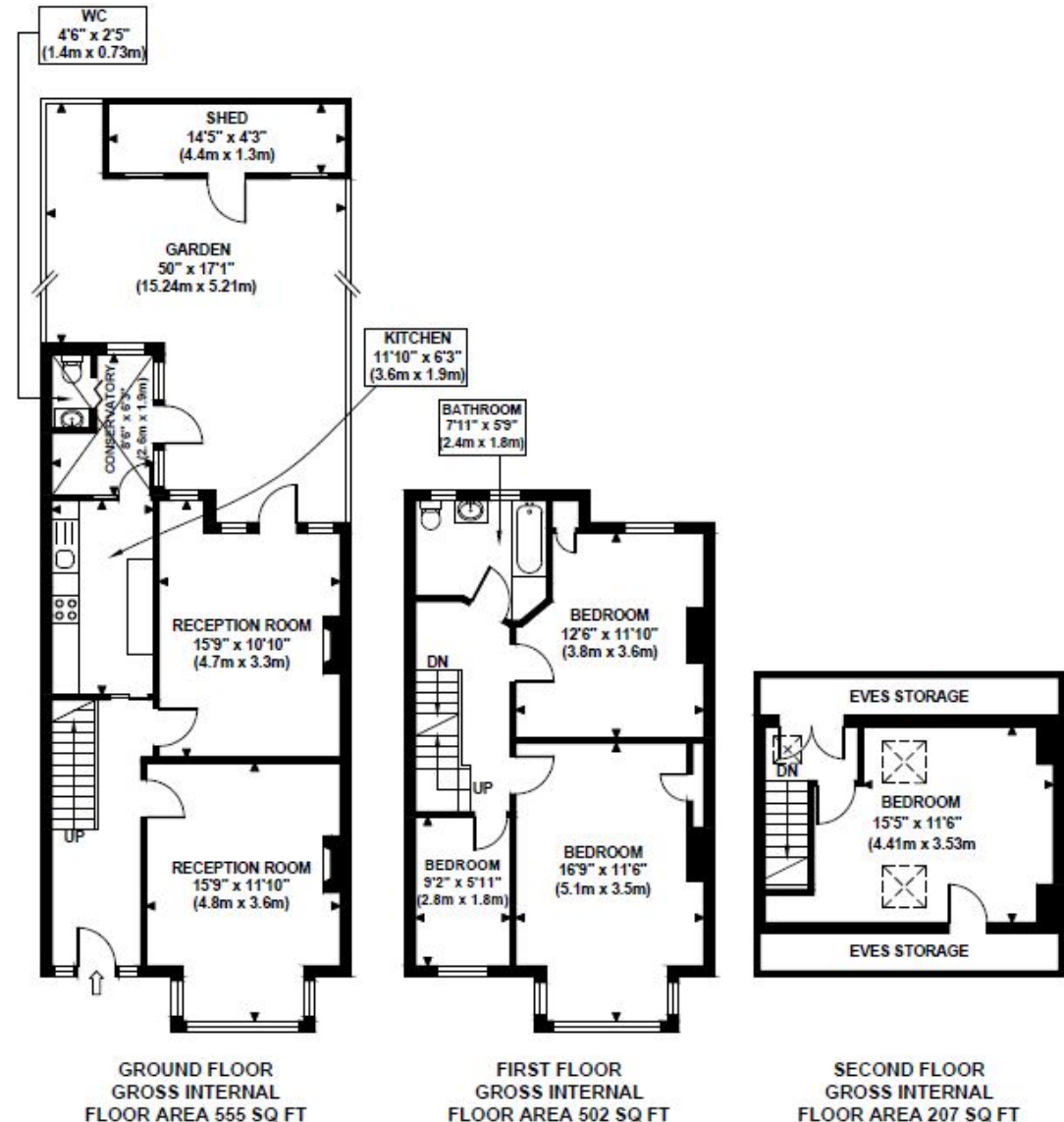
Located close to the entrance of Pitshanger Park, Barnfield Road is a pretty tree lined street, located off Pitshanger Lane's Award Winning High Street, with its excellent local amenities including a variety of local shops, restaurants, good primary schools and local bus services to Ealing Broadway.

EPC RATING: E
LOCAL AUTHORITY: Ealing
COUNCIL TAX BAND: F

You may wish to instruct us about a related service, including: the sale and letting of residential and commercial property, the provision of mortgage and financial services, conveyancing and property management. Where you choose to use other services, Northfields or its employees may receive a fee or commission which will be disclosed to you.

BARNFIELD ROAD

Approximate Gross Internal Area
1264 sq ft / 117.40 sq m



Although every attempt has been made to ensure accuracy, all measurements are approximate and no responsibility is taken for any error, omission, or mid-statement. This floor plan is for illustrative purposes only and not to scale. Measured in accordance to RICS standards. GB PRO PHOTOS

Your local independent award winning estate agents



Pitshanger

1 Albert Terrace
Ealing
London W5 1RL
Sales: 020 8998 3111
E: pitssales@northfields.co.uk

020 8998 3111

www.northfields.co.uk

CONTACT

Us today

TO FIND OUT

MORE