



Northfields

BUCKINGHAM AVENUE  
UB6

£279,950

Perivale



# BUCKINGHAM AVENUE, UB6

£279,950



Reception Room



Kitchen



One Bedroom



Bathroom



Residents Parking

A spacious one bedroom ground floor purpose built flat with direct access to a private patio, which leads on to a lovely communal lawn garden.

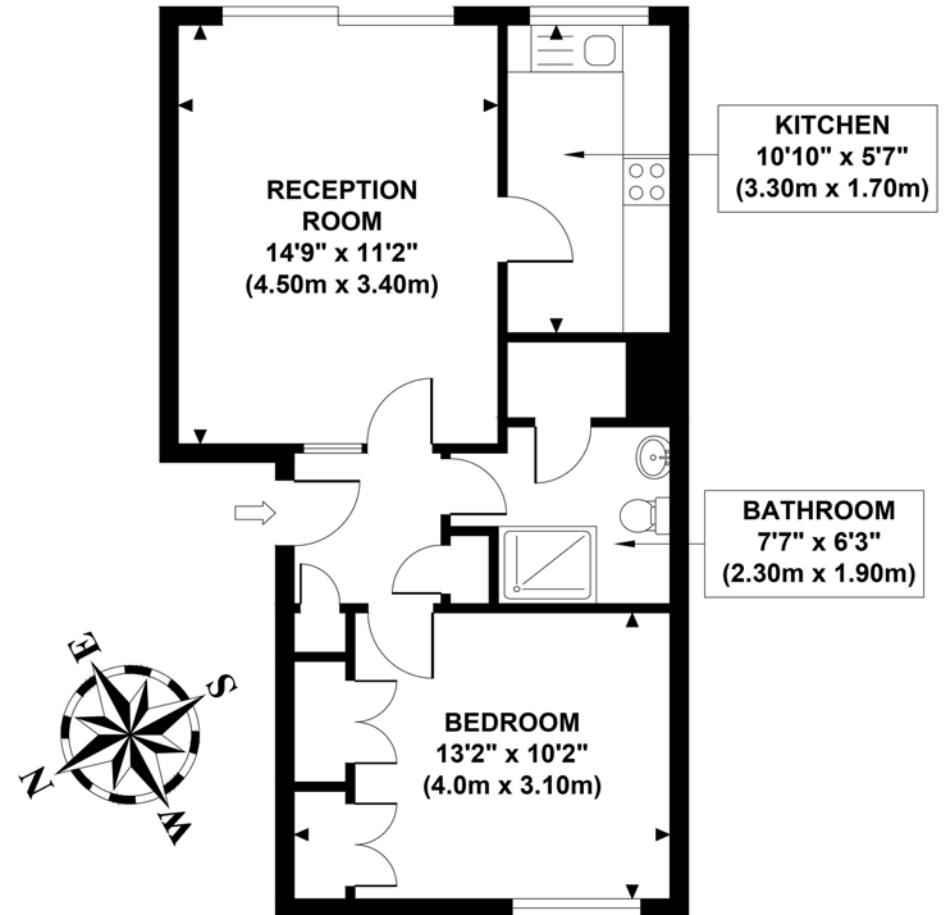
Buckingham Avenue is located just off Horsenden Lane South minutes from Perivale underground station on the central line, offering easy access to Central London and within a ten minute bus journey to Alperton, situated on the Piccadilly line. The property is located just off the A40 with quick access to Heathrow and the M25. There are parks and open spaces nearby, notably Horsenden Hill, Perivale Wood Nature Reserve and the Grand Union Canal.

EPC RATING: C  
LOCAL AUTHORITY: Greenford  
COUNCIL TAX BAND: C  
LENGTH OF LEASE: 130 years from 1 January 1981

You may wish to instruct us about a related service, including: the sale and letting of residential and commercial property, the provision of mortgage and financial services, conveyancing and property management. Where you choose to use other services, Northfields or its employees may receive a fee or commission which will be disclosed to you.

## BUCKINGHAM AVENUE

Approximate Gross Internal Area  
464 sq ft / 43.10 sq m



**GROUND FLOOR  
GROSS INTERNAL  
FLOOR AREA 464 SQ FT**

Although every attempt has been made to ensure accuracy, all measurements are approximate and no responsibility is taken for any error, omission, or mid-statement. This floor plan is for illustrative purposes only and not to scale. Measured in accordance to RICS standards.  
GB PRO PHOTOS

## Your local independent award winning estate agents



### Pitshanger

1 Albert Terrace  
Ealing  
London W5 1RL  
Sales: 020 8998 3111  
E: [pitssales@northfields.co.uk](mailto:pitssales@northfields.co.uk)

020 8998 3111

[www.northfields.co.uk](http://www.northfields.co.uk)

**CONTACT**

*Us today*

TO FIND OUT

**MORE**