



Northfields

CASTLEBAR PARK
W5

£595,000

Pitshanger



CASTLEBAR PARK, W5

£595,000



Reception Room



Eat-in Kitchen



Two Bedrooms



Bathroom



On Street

From the moment you first walk through the private entrance and into the generous hallway of this maisonette we think you'll be charmed by the character of this home. The large reception room has elegant touches that manage to look both striking and welcoming at the same time. We think you'll want to pull up a seat and admire the graceful feature fireplace, period cornicing and coving and the bay window which are complimented by the wooden parquet floors. The separate kitchen is open plan to the dining area and a door from this open plan space leads out onto the West-facing private garden. With a mature tree toward the end of the garden providing shade, there are mature plants to one side of the lawn to add interest and increase privacy. The master bedroom also has direct access to the garden space. The double door in the bedroom fills the master bedroom with light and highlights the beauty of the wooden parquet floors. The built-in wardrobes help keep clutter to a minimum. A second double bedroom shares the same style of wooden parquet floors that can be found in most of the property and has a crisp and fresh look. The bathroom, which completes the interior space of this home, has a full white suite and floor to ceiling tiles.

Close to the shops and brasseries in Pitshanger Lane that serve as the centre of activity in this community, you won't have to wander far to enjoy a coffee or to pick up some essentials. The beautiful wide open spaces of Pitshanger Park are close by, providing places for Sunday afternoon strolls or picnics.

EPC RATING: D

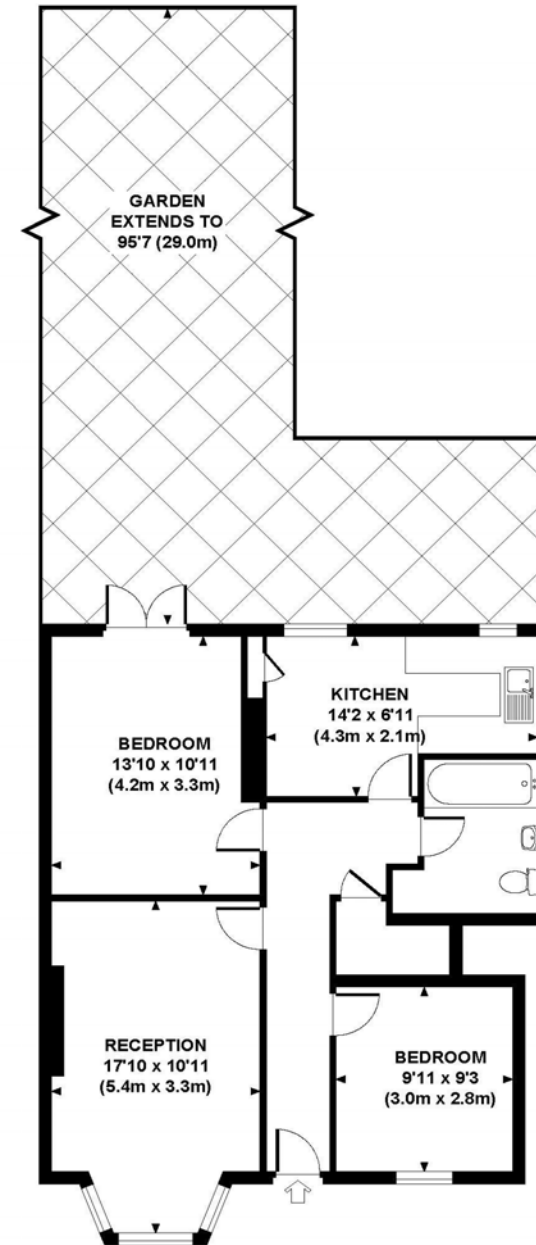
LOCAL AUTHORITY: London Borough of Ealing

COUNCIL TAX BAND: D

LENGTH OF LEASE: 125 years from 27 February 1979 - Share of Freehold

You may wish to instruct us about a related service, including: the sale and letting of residential and commercial property, the provision of mortgage and financial services, conveyancing and property management. Where you choose to use other services, Northfields or its employees may receive a fee or commission which will be disclosed to you.

CASTLEBAR PARK
Approximate Gross Internal Area 708 sq ft / 65.8 sq m



GROUND FLOOR
GROSS INTERNAL
FLOOR AREA 708 SQ FT

Although every attempt has been made to ensure accuracy, all measurements are approximate. The floor plan's for illustrative purposes only and not to scale. Measured in accordance to RICS standards. DE-PHOTOGRAPHY.NET

Your local independent
award winning estate agents



Pitshanger

1 Albert Terrace
Ealing
London W5 1RL
Sales: 020 8998 3111
E: pitssales@northfields.co.uk

020 8998 3111

www.northfields.co.uk

