



Websters
estate agents

Heathfield North, Twickenham, TW2 7QN

A superbly presented 4 bedroom 1930s family home.

This appealing home has been renovated by the present owners to an impressive standard and offers 1388 sq ft of versatile accommodation, extending over three floors. The property has a very light and airy feel and benefits from a southerly aspect.

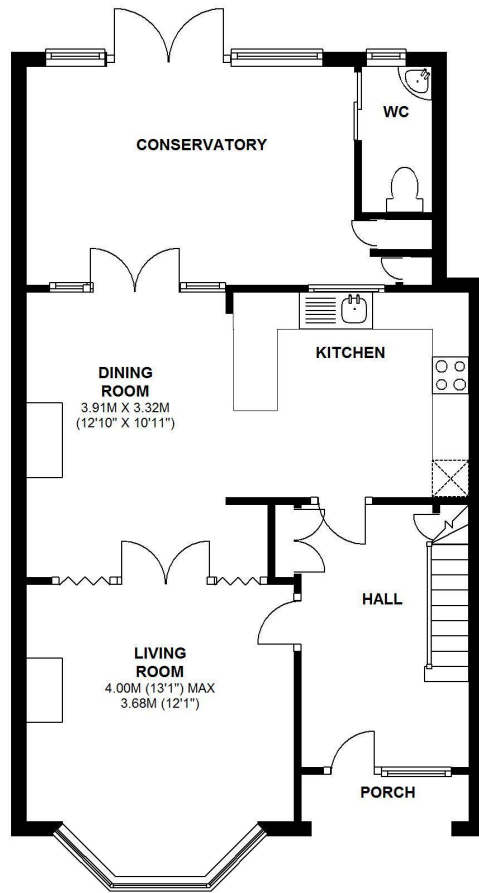
There are two reception rooms with the living room having an open fire, modern fitted kitchen and impressive conservatory directly opening onto a south facing garden.

Upstairs there are three doubles and one single bedroom. There is a period style family bathroom, complete with roll top bath and shower and a very useful en suite shower room to the master bedroom.

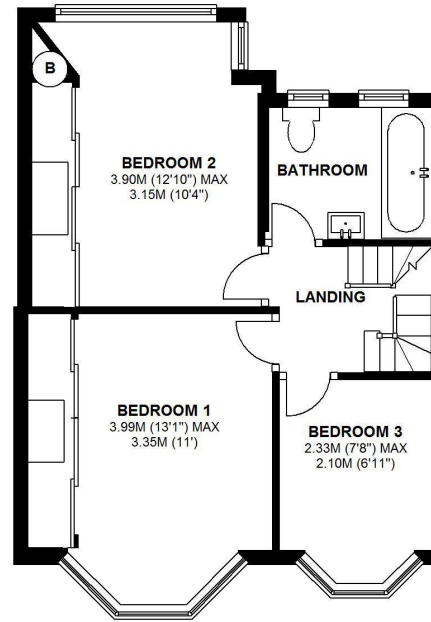
Heathfield North is an extremely popular residential road located just off Whitton Road and is less than 0.4 miles away from Twickenham mainline railway station.

- 4 Bedrooms & 2 Reception Rooms
- Conservatory
- Downstairs W.C
- Modern Fitted Kitchen
- Wooden Floors & Double Glazing
- South Facing Garden
- Family Bathroom & En Suite Shower Room
- Twickenham Mainline Station under 0.4 Miles

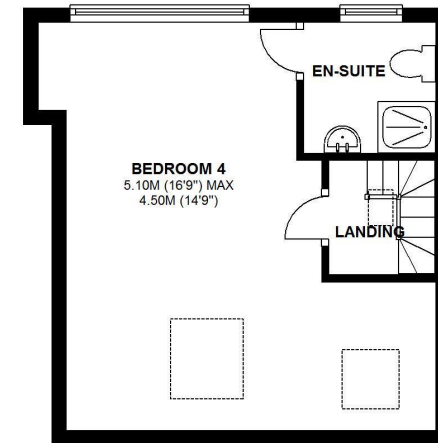




GROUND FLOOR
APPROX. 60.3 SQ. METRES (649.1 SQ. FEET)



FIRST FLOOR
APPROX. 38.4 SQ. METRES (413.5 SQ. FEET)



SECOND FLOOR
APPROX. 30.3 SQ. METRES (326.0 SQ. FEET)

TOTAL AREA: APPROX. 129.0 SQ. METRES (1388.6 SQ. FEET)

a Websters Estate Agents 36 Broad Street, Teddington, Middlesex TW11 8QY **t** 020 8614 6000

e sales@mywebsters.co.uk **w** mywebsters.co.uk

Disclaimer
These particulars, whilst believed to be accurate are set out as a general outline only for guidance and do not constitute any part of an offer or contract. Intending purchasers should not rely on them as statements of representation of fact, but must satisfy themselves by inspection or otherwise as to their accuracy. We have not carried out a detailed survey nor tested the services, appliances and specific fittings. Room sizes should not be relied upon for carpets and furnishings. The measurements given are approximate. No person in this firm's employment has the authority to make or give any representation or warranty in respect of the property.

