



Websters  
estate agents

# Gravel Road, Twickenham, TW2 6RH

Viewings by appointment from Saturday 12th September.

Superb end of terrace 4 bedroom Victorian home in a popular residential location 0.2 miles from Twickenham Green, 0.4 miles from highly acclaimed Archdeacon Cambridge and Trafalgar Primary Schools and 0.7 miles from Waldegrave Girls School/Sixth Form.

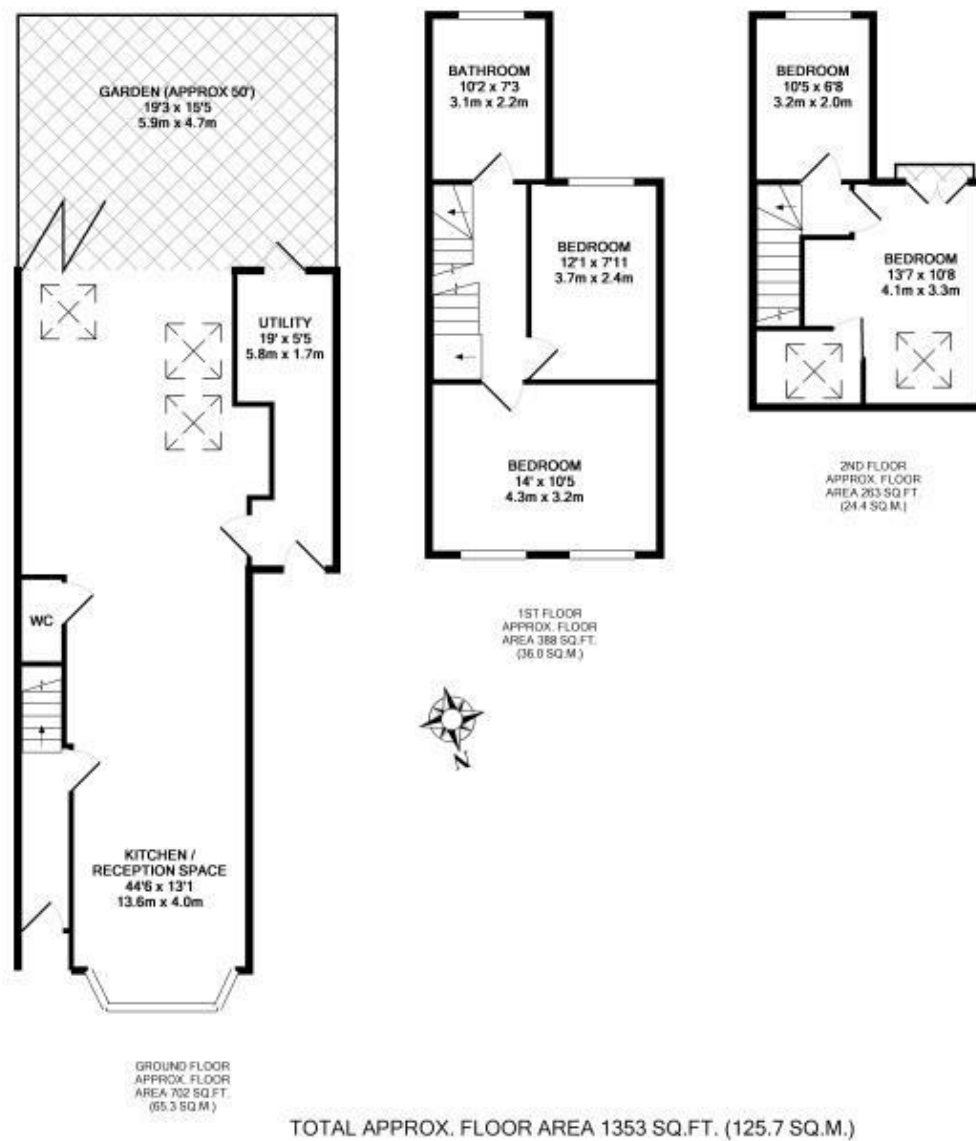
Extended, loft converted, re-configured and fully refurbished to an impressive standard with a new roof, windows and doors, full electrical re-wire and new plumbing throughout. This light and spacious family home offers 1353 sq ft of stylish, well planned contemporary living space over 3 floors.

Entrance hallway leads into the open plan living area with plantation shutters in the bay window, underfloor heating throughout and access to a w.c and a glazed roof utility area at the side. To the rear of the room is the stunning integrated kitchen with high specification appliances, a central island/breakfast bar, space for a dining table or seating area, velux roof windows and stylish full width folding doors opening onto the newly landscaped south facing garden. On the first floor are 2 double bedrooms and the luxury 4 piece family bathroom with the feature staircase leading up to 2 further bedrooms, the master with en-suite shower facilities, a juliet balcony and eaves storage.

Situated within 0.8 miles of Twickenham town centre and mainline train station.  
EPC Rating D

- End of Terrace 4 Bedroom Victorian Home
- Extended, Loft Converted and Refurbished
- Fabulous Open Plan Living Room/Kitchen
- Landscaped South Facing Garden
- High Specification Fixtures and Fittings
- Luxury Bathroom and Shower Room
- 1353 Sq Ft of Contemporary Living Space
- 0.8 Miles from Twickenham Mainline Station





a Websters Estate Agents 164 Heath Road, Twickenham, Middlesex TW1 4BN t 020 8892 3343 e sales@mywebsters.co.uk w mywebsters.co.uk

**Disclaimer**  
These particulars, whilst believed to be accurate are set out as a general outline only for guidance and do not constitute any part of an offer or contract. Intending purchasers should not rely on them as statements of representation of fact, but must satisfy themselves by inspection or otherwise as to their accuracy. We have not carried out a detailed survey nor tested the services, appliances and specific fittings. Room sizes should not be relied upon for carpets and furnishings. The measurements given are approximate. No person in this firm's employment has the authority to make or give any representation or warranty in respect of the property.

