



Websters  
estate agents



# Third Cross Road, Twickenham, TW2 5EA

Period purpose built maisonette with private garden.

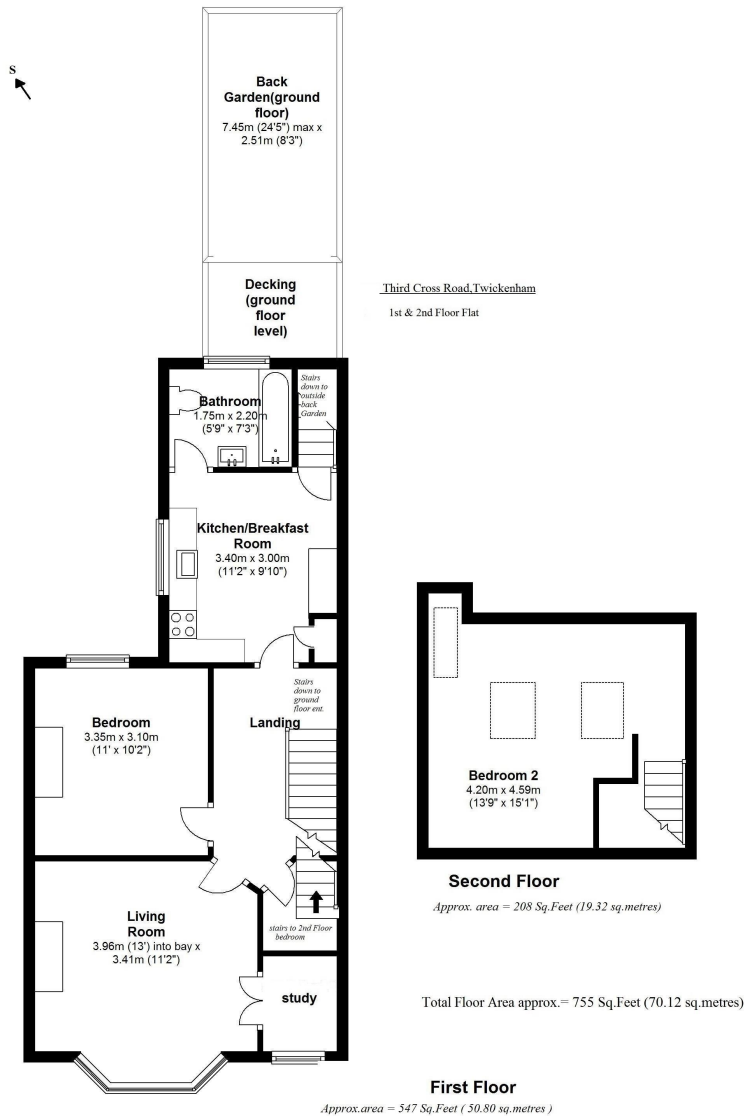
Arranged over the first and second floors with a loft conversion to create a desirable and stylish 755 sq ft 2 double bedroom property.

Bay fronted living room with feature fireplace and access to a separate study. Double bedroom with views to the rear and light and airy double bedroom on the second floor accessed via a space saving staircase. Period style bathroom and modern fitted kitchen/breakfast room. An enclosed staircase from the kitchen leads to the private west facing garden with a sun deck and pedestrian rear access.

Located 300 yards from Twickenham Green, 0.6 miles from Strawberry Hill station and 1.2 miles from Twickenham train station.

- Private West Facing Garden
- 2 Double Bedrooms
- Loft Converted - Over Two Floors
- Bay Fronted Living Room
- Separate Study
- Period Style Bathroom
- Kitchen/Breakfast Room
- Share of Freehold





**a** Websters Estate Agents 36 Broad Street, Teddington, Middlesex TW11 8QY

**t** 020 8614 6000

**e** sales@mywebsters.co.uk **w** mywebsters.co.uk

**Disclaimer**

These particulars, whilst believed to be accurate are set out as a general outline only for guidance and do not constitute any part of an offer or contract. Intending purchasers should not rely on them as statements of representation of fact, but must satisfy themselves by inspection or otherwise as to their accuracy. We have not carried out a detailed survey nor tested the services, appliances and specific fittings. Room sizes should not be relied upon for carpets and furnishings. The measurements given are approximate. No person in this firm's employment has the authority to make or give any representation or warranty in respect of the property.



