

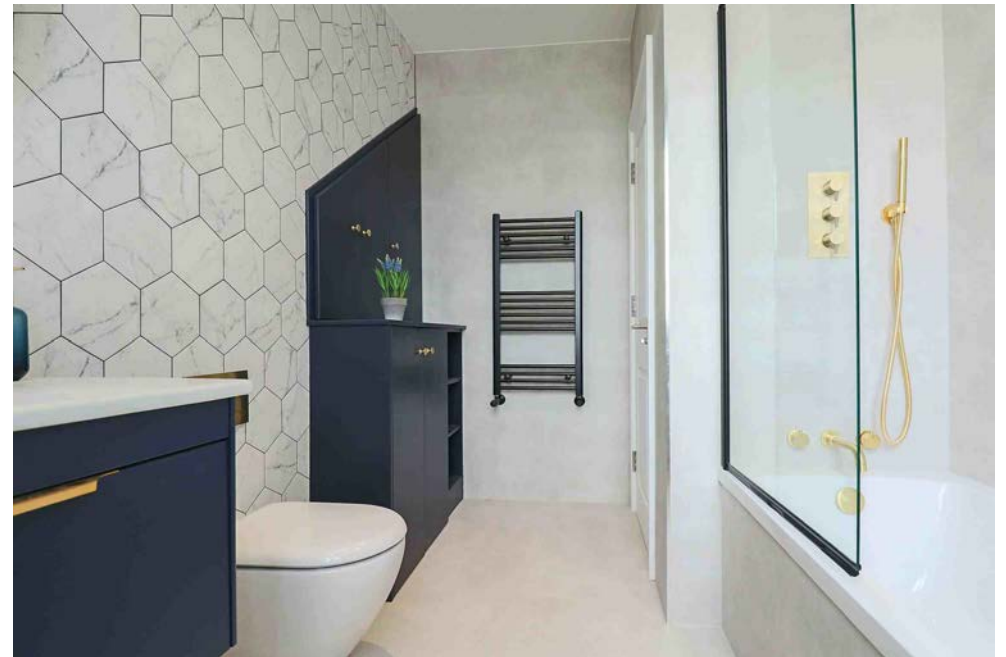


Northfields

TWYFORD AVENUE
W3

£499,950

Acton



TWYFORD AVENUE, W3

£499,950



Reception Room



Modern Kitchen



Two Double Bedrooms



One Bathroom



Resident Parking Permit

This is a truly exceptional, new to the market, two double bedroom, top floor apartment in an impressive period house full of contemporary elegance offering spacious living accommodation.

With a long lease and share of freehold, this exquisite conversion is luxurious throughout with endless attention to detail and state-of-the-art features in a premier Ealing location.

The open plan living area delivers an abundance of natural light, wooden floors, space for a dining table and chairs and a large sofa ideal for relaxed entertaining.

The modern fully fitted kitchen is well appointed with quality integrated appliances, ample storage space, easy-to-maintain work surfaces, and spotlighting creating a fresh contemporary feel. The bedrooms are fully carpeted with plenty of natural light and the luxury bathroom has been designed for relaxation and indulgence.

Twyford Avenue is within easy reach of Ealing Broadway Centre with its extensive choice of restaurants, cafes, and bars, and with the much-awaited completion of the Filmworks complex, there will be further entertainment options arriving soon.

There are superb transport links with the apartments being approx. 650m from West Acton (Central Line) and 800m from Ealing Common (District and Piccadilly lines) tube stations and local bus routes including the 218, 207, and 427, and car owners can easily access the A40/M40 and the A4/M4 within a short drive.

EPC RATING:D

LOCAL AUTHORITY:London Borough of Ealing

COUNCIL TAX BAND:D

TENURE: Share of Freehold

You may wish to instruct us about a related service, including: the sale and letting of residential and commercial property, the provision of mortgage and financial services, conveyancing and property management. Where you choose to use other services, Northfields or its employees may receive a fee or commission which will be disclosed to you.

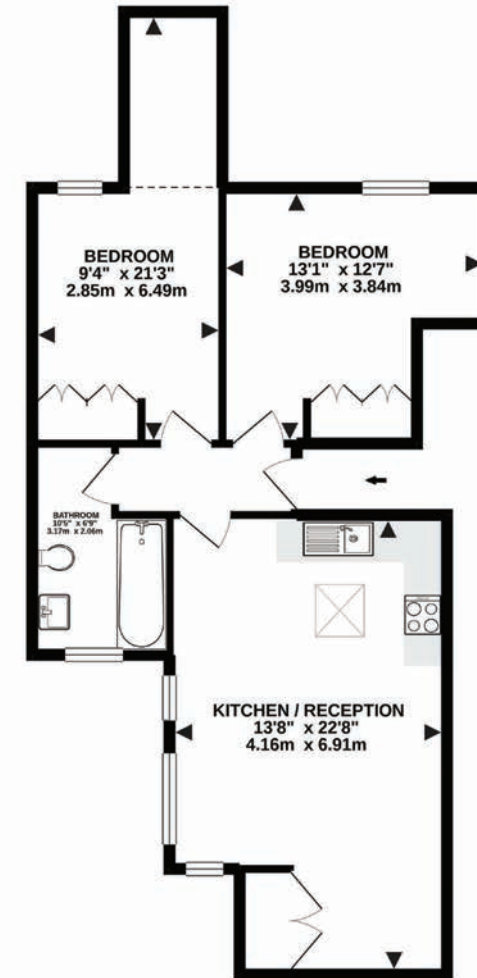
TWYFORD AVENUE

Approximate Gross Internal Area

688 sq ft / 64 sq m



Northfields



SECOND FLOOR
GROSS INTERNAL
FLOOR AREA 688 SQ FT approx

Whilst every attempt has been made to ensure the accuracy of the floorplan contained here, measurements of doors, windows, rooms and any other items are approximate and no responsibility is taken for any error, omission or mis-statement. This plan is for illustrative purposes only and should be used as such by any prospective purchaser. The services, systems and appliances shown have not been tested and no guarantee as to their operability or efficiency can be given.

Made with Metropix ©2021

