



Websters  
estate agents

# Camac Road, Twickenham, TW2 6NX

Ground Floor 1 bedroom apartment with a Share of Freehold and private garden. Situated in a quiet residential location less than 0.2 miles from Twickenham Green, local shops, cafes and restaurants and 0.7 miles from Twickenham town centre and Strawberry Hill train station.

Tastefully presented to offer 414 sq ft of living space with modern fixtures and fittings, double glazed windows and doors and neutral decor throughout.

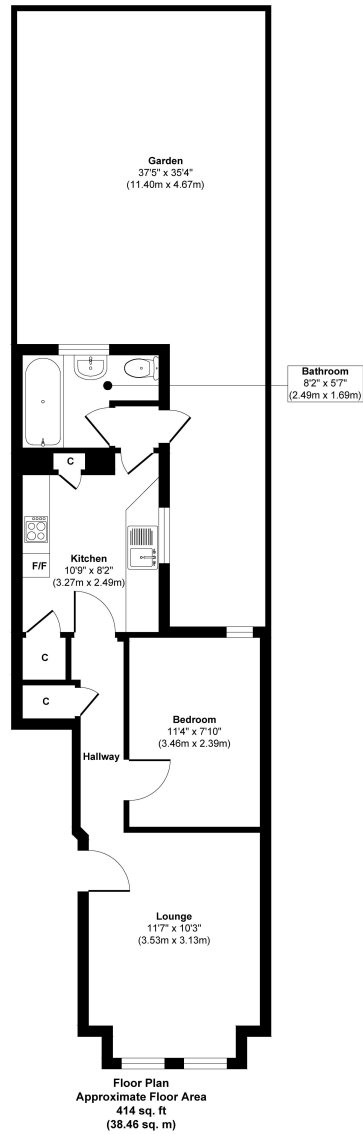
Front door opens into the living room with access to the internal hallway with doors to storage, the bedroom and the kitchen at the rear. This light filled room has fitted units, a window at the side, a door to the bathroom and access to the private low maintenance garden.

Located 0.3 miles from Kneller Gardens with a towpath/bike track along the River Crane to Crane Park and into Twickenham.

EPC Rating D

- Ground Floor 1 Bedroom Apartment
- Private Rear Garden
- Share of Freehold
- Popular Residential Location
- Tastefully Presented Throughout
- 0.2 Miles from Twickenham Green
- 0.7 Miles from Strawberry Hill Station





Approx. Gross Internal Floor Area 414 sq. ft / 38.46 sq. m

**a** Websters Estate Agents 36 Broad Street, Teddington, Middlesex TW11 8QY

**t** 020 8614 6000

**e** sales@mywebsters.co.uk **w** mywebsters.co.uk

**Disclaimer**

These particulars, whilst believed to be accurate are set out as a general outline only for guidance and do not constitute any part of an offer or contract. Intending purchasers should not rely on them as statements of representation of fact, but must satisfy themselves by inspection or otherwise as to their accuracy. We have not carried out a detailed survey nor tested the services, appliances and specific fittings. Room sizes should not be relied upon for carpets and furnishings. The measurements given are approximate. No person in this firm's employment has the authority to make or give any representation or warranty in respect of the property.

